

## Product datasheet for **TA506235M**

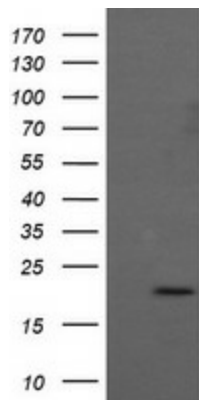
### Apc11 (ANAPC11) Mouse Monoclonal Antibody [Clone ID: OTI1A8]

#### Product data:

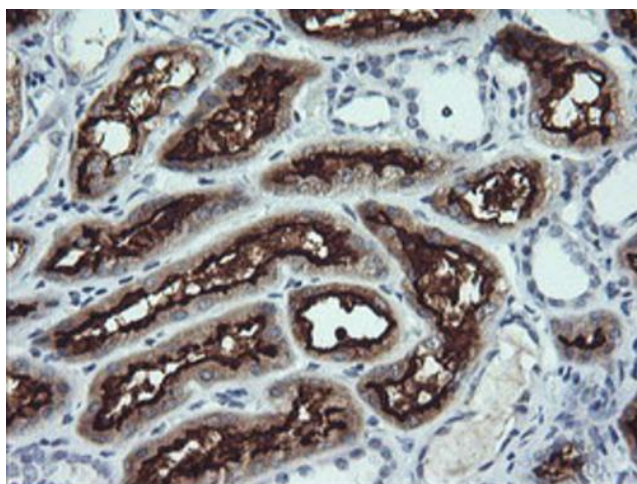
Product Type:	Primary Antibodies
Clone Name:	OTI1A8
Applications:	IF, IHC, WB
Recommended Dilution:	WB 1:4000, IHC 1:150, IF 1:100
Reactivity:	Human, Mouse, Rat
Host:	Mouse
Isotype:	IgG1
Clonality:	Monoclonal
Immunogen:	Full length human recombinant protein of human ANAPC11(NP_001002244) produced in HEK293T cell.
Formulation:	PBS (pH 7.3) containing 1% BSA, 50% glycerol and 0.02% sodium azide.
Concentration:	1 mg/ml
Purification:	Purified from mouse ascites fluids or tissue culture supernatant by affinity chromatography (protein A/G)
Conjugation:	Unconjugated
Storage:	Store at -20°C as received.
Stability:	Stable for 12 months from date of receipt.
Predicted Protein Size:	20.5 kDa
Gene Name:	anaphase promoting complex subunit 11
Database Link:	<a href="#">NP_001002244</a> <a href="#">Entrez Gene 66156 Mouse</a> <a href="#">Entrez Gene 498030 Rat</a> <a href="#">Entrez Gene 51529 Human</a> <a href="#">Q9NYG5</a>
Synonyms:	APC11; Apc11p; HSPC214
Protein Families:	Druggable Genome
Protein Pathways:	Cell cycle, Oocyte meiosis, Progesterone-mediated oocyte maturation, Ubiquitin mediated proteolysis


[View online »](#)

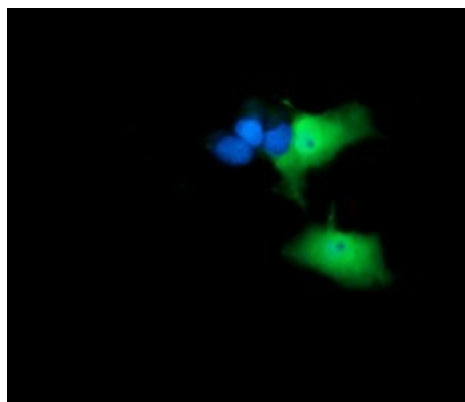
## Product images:



HEK293T cells were transfected with the pCMV6-ENTRY control (Left lane) or pCMV6-ENTRY ANAPC11 ([RC200097], Right lane) cDNA for 48 hrs and lysed. Equivalent amounts of cell lysates (5 ug per lane) were separated by SDS-PAGE and immunoblotted with anti-ANAPC11. Positive lysates [LY424181] (100ug) and [LC424181] (20ug) can be purchased separately from OriGene.



Immunohistochemical staining of paraffin-embedded Human Kidney tissue within the normal limits using anti-ANAPC11 mouse monoclonal antibody. Heat-induced epitope retrieval by EDTA solution buffer pH 8.0 at 120°C for 3 min.



Anti-ANAPC11 mouse monoclonal antibody ([TA506235]) immunofluorescent staining of COS7 cells transiently transfected by pCMV6-ENTRY ANAPC11 ([RC200097]).