

## Product datasheet for **TA506231**

### PDGF Receptor beta (PDGFRB) Mouse Monoclonal Antibody [Clone ID: OTI3B5]

#### Product data:

|                         |   |
|-------------------------|---|
| Product Type:           | Primary Antibodies  |
| Clone Name:             | OTI3B5  |
| Applications:           | IF, WB  |
| Recommended Dilution:   | WB 1:4000, IF 1:100   |
| Reactivity:             | Human, Mouse, Rat   |
| Host:                   | Mouse   |
| Isotype:                | IgG1  |
| Clonality:              | Monoclonal  |
| Immunogen:              | Full length human recombinant protein of human PDGFRB(NP_002600) produced in HEK293T cell.  |
| Formulation:            | PBS (pH 7.3) containing 1% BSA, 50% glycerol and 0.02% sodium azide.  |
| Concentration:          | 1 mg/ml   |
| Purification:           | Purified from mouse ascites fluids or tissue culture supernatant by affinity chromatography (protein A/G)   |
| Conjugation:            | Unconjugated  |
| Storage:                | Store at -20°C as received.   |
| Stability:              | Stable for 12 months from date of receipt.  |
| Predicted Protein Size: | 123.8 kDa   |
| Gene Name:              | platelet derived growth factor receptor beta  |
| Database Link:          | <a href="#">NP_002600</a><br><a href="#">Entrez Gene 18596 Mouse</a> <a href="#">Entrez Gene 24629 Rat</a> <a href="#">Entrez Gene 5159 Human</a><br><a href="#">P09619</a> |



[View online »](#)

**Background:**

This gene encodes a cell surface tyrosine kinase receptor for members of the platelet-derived growth factor family. These growth factors are mitogens for cells of mesenchymal origin. The identity of the growth factor bound to a receptor monomer determines whether the functional receptor is a homodimer or a heterodimer, composed of both platelet-derived growth factor receptor alpha and beta polypeptides. This gene is flanked on chromosome 5 by the genes for granulocyte-macrophage colony-stimulating factor and macrophage-colony stimulating factor receptor; all three genes may be implicated in the 5-q syndrome. A translocation between chromosomes 5 and 12, that fuses this gene to that of the translocation, ETV6, leukemia gene, results in chronic myeloproliferative disorder with eosinophilia. [provided by RefSeq, Jul 2008]

**Synonyms:**

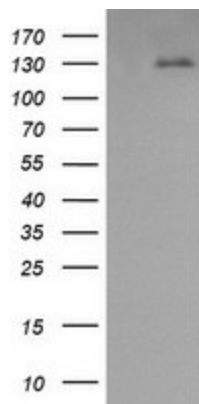
CD140B; IBGC4; IMF1; JTK12; PDGFR; PDGFR-1; PDGFR1

**Protein Families:**

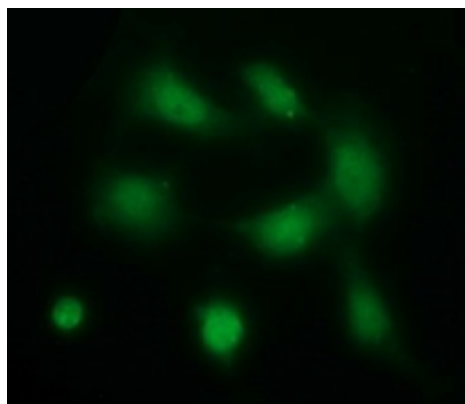
Druggable Genome, ES Cell Differentiation/IPS, Protein Kinase, Transmembrane

**Protein Pathways:**

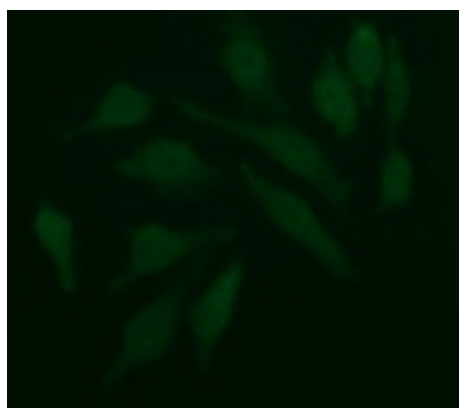
Calcium signaling pathway, Colorectal cancer, Cytokine-cytokine receptor interaction, Focal adhesion, Gap junction, Glioma, MAPK signaling pathway, Melanoma, Pathways in cancer, Prostate cancer, Regulation of actin cytoskeleton

**Product images:**

HEK293T cells were transfected with the pCMV6-ENTRY control (Left lane) or pCMV6-ENTRY PDGFRB ([RC206377], Right lane) cDNA for 48 hrs and lysed. Equivalent amounts of cell lysates (5 ug per lane) were separated by SDS-PAGE and immunoblotted with anti-PDGFRB. Positive lysates [LY400921] (100ug) and [LC400921] (20ug) can be purchased separately from OriGene.



Anti-PDGFRB mouse monoclonal antibody (TA506231) immunofluorescent staining of COS7 cells transiently transfected by pCMV6-ENTRY PDGFRB ([RC206377]).



Immunofluorescent staining of HeLa cells using anti-PDGFRB mouse monoclonal antibody (TA506231).