

Product datasheet for **TA506230S**

PDGF Receptor beta (PDGFRB) Mouse Monoclonal Antibody [Clone ID: OTI1E8]

Product data:

Product Type:	Primary Antibodies
Clone Name:	OTI1E8
Applications:	IF, IHC, WB
Recommended Dilution:	WB 1:4000, IHC 1:150, IF 1:100
Reactivity:	Human, Mouse, Rat
Host:	Mouse
Isotype:	IgG1
Clonality:	Monoclonal
Immunogen:	Full length human recombinant protein of human PDGFRB(NP_002600) produced in HEK293T cell.
Formulation:	PBS (pH 7.3) containing 1% BSA, 50% glycerol and 0.02% sodium azide.
Concentration:	1 mg/ml
Purification:	Purified from mouse ascites fluids or tissue culture supernatant by affinity chromatography (protein A/G)
Conjugation:	Unconjugated
Storage:	Store at -20°C as received.
Stability:	Stable for 12 months from date of receipt.
Gene Name:	platelet derived growth factor receptor beta
Database Link:	NP_002600 Entrez Gene 18596 Mouse Entrez Gene 24629 Rat Entrez Gene 5159 Human P09619



[View online »](#)

Background:

This gene encodes a cell surface tyrosine kinase receptor for members of the platelet-derived growth factor family. These growth factors are mitogens for cells of mesenchymal origin. The identity of the growth factor bound to a receptor monomer determines whether the functional receptor is a homodimer or a heterodimer, composed of both platelet-derived growth factor receptor alpha and beta polypeptides. This gene is flanked on chromosome 5 by the genes for granulocyte-macrophage colony-stimulating factor and macrophage-colony stimulating factor receptor; all three genes may be implicated in the 5-q syndrome. A translocation between chromosomes 5 and 12, that fuses this gene to that of the translocation, ETV6, leukemia gene, results in chronic myeloproliferative disorder with eosinophilia. [provided by RefSeq, Jul 2008]

Synonyms:

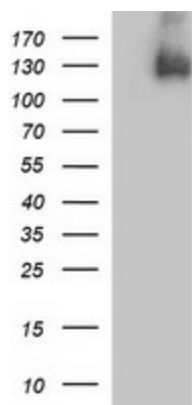
CD140B; IBGC4; IMF1; JTK12; PDGFR; PDGFR-1; PDGFR1

Protein Families:

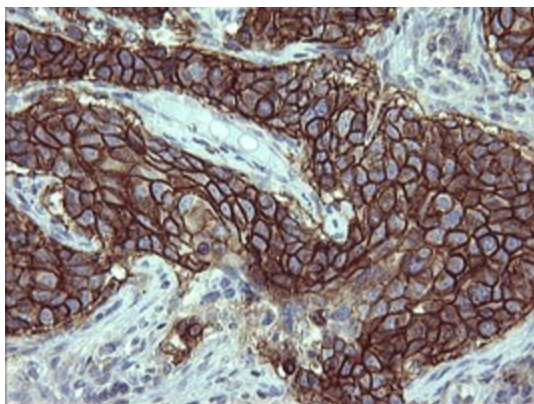
Druggable Genome, ES Cell Differentiation/IPS, Protein Kinase, Transmembrane

Protein Pathways:

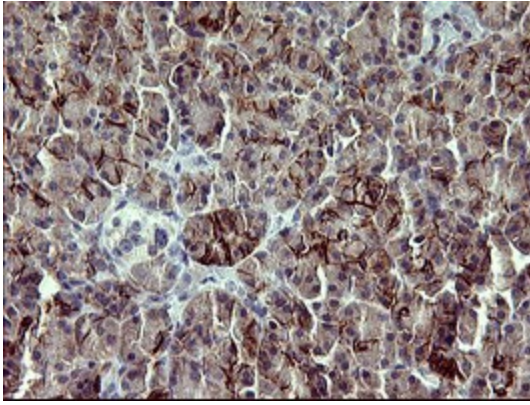
Calcium signaling pathway, Colorectal cancer, Cytokine-cytokine receptor interaction, Focal adhesion, Gap junction, Glioma, MAPK signaling pathway, Melanoma, Pathways in cancer, Prostate cancer, Regulation of actin cytoskeleton

Product images:

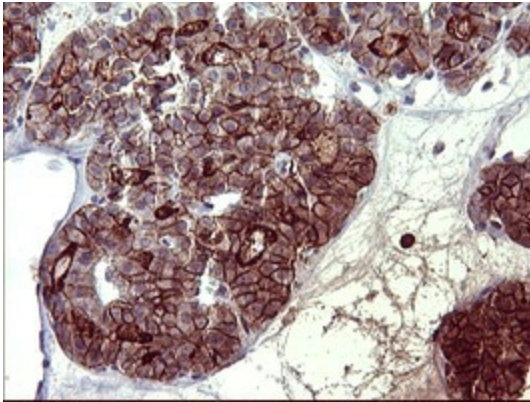
HEK293T cells were transfected with the pCMV6-ENTRY control (Cat# [PS100001], Left lane) or pCMV6-ENTRY PDGFRB (Cat# [RC206377], Right lane) cDNA for 48 hrs and lysed. Equivalent amounts of cell lysates (5 ug per lane) were separated by SDS-PAGE and immunoblotted with anti-PDGFRB (Cat# [TA506230]). Positive lysates [LY400921] (100ug) and [LC400921] (20ug) can be purchased separately from OriGene.



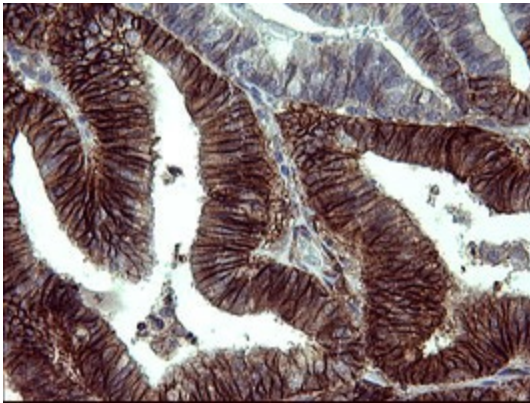
Immunohistochemical staining of paraffin-embedded Carcinoma of Human lung tissue using anti-PDGFRB mouse monoclonal antibody. (Heat-induced epitope retrieval by 10mM citric buffer, pH6.0, 120°C for 3min, [TA506230])



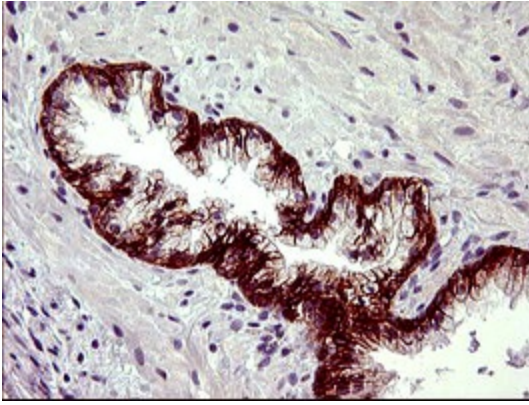
Immunohistochemical staining of paraffin-embedded Human pancreas tissue within the normal limits using anti-PDGFRB mouse monoclonal antibody. (Heat-induced epitope retrieval by 10mM citric buffer, pH6.0, 120°C for 3min, [TA506230])



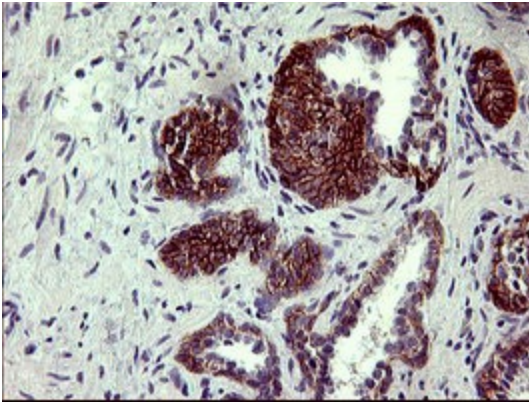
Immunohistochemical staining of paraffin-embedded Carcinoma of Human thyroid tissue using anti-PDGFRB mouse monoclonal antibody. (Heat-induced epitope retrieval by 10mM citric buffer, pH6.0, 120°C for 3min, [TA506230])



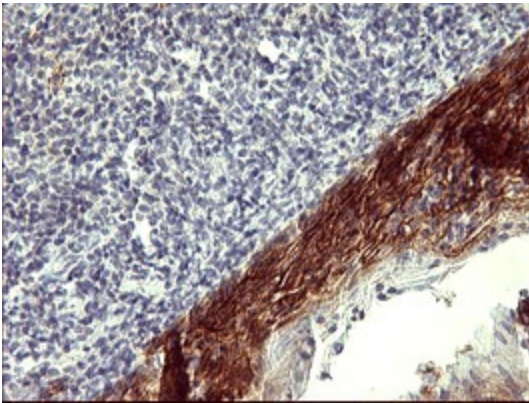
Immunohistochemical staining of paraffin-embedded Adenocarcinoma of Human endometrium tissue using anti-PDGFRB mouse monoclonal antibody. (Heat-induced epitope retrieval by 10mM citric buffer, pH6.0, 120°C for 3min, [TA506230])



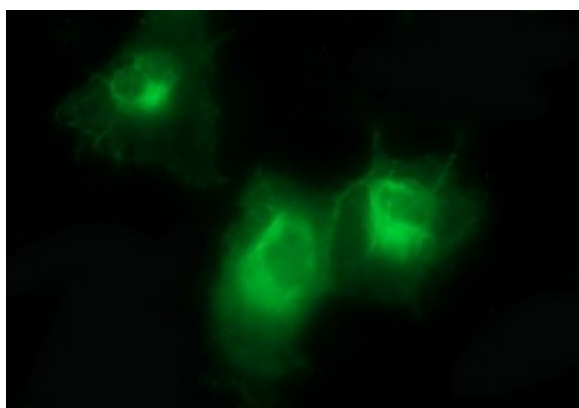
Immunohistochemical staining of paraffin-embedded Human prostate tissue within the normal limits using anti-PDGFRB mouse monoclonal antibody. (Heat-induced epitope retrieval by 10mM citric buffer, pH6.0, 120°C for 3min, [TA506230])



Immunohistochemical staining of paraffin-embedded Carcinoma of Human prostate tissue using anti-PDGFRB mouse monoclonal antibody. (Heat-induced epitope retrieval by 10mM citric buffer, pH6.0, 120°C for 3min, [TA506230])



Immunohistochemical staining of paraffin-embedded Human lymph node tissue within the normal limits using anti-PDGFRB mouse monoclonal antibody. (Heat-induced epitope retrieval by 10mM citric buffer, pH6.0, 120°C for 3min, [TA506230])



Anti-PDGFRB mouse monoclonal antibody ([TA506230]) immunofluorescent staining of COS7 cells transiently transfected by pCMV6-ENTRY PDGFRB ([RC206377]).