

## Product datasheet for **TA506227AM**

### PDGF Receptor beta (PDGFRB) Mouse Monoclonal Antibody (Biotin conjugated) [Clone ID: OTI1G9]

#### Product data:

Product Type:	Primary Antibodies
Clone Name:	OTI1G9
Applications:	IF, WB
Recommended Dilution:	WB 1:2000, IF 1:100
Reactivity:	Human, Mouse, Rat
Host:	Mouse
Isotype:	IgG1
Clonality:	Monoclonal
Immunogen:	Full length human recombinant protein of human PDGFRB(NP_002600) produced in HEK293T cell.
Formulation:	PBS (pH 7.3) containing 1% BSA, 50% glycerol and 0.02% sodium azide.
Concentration:	0.5 mg/ml
Purification:	Purified from mouse ascites fluids or tissue culture supernatant by affinity chromatography (protein A/G)
Conjugation:	Biotin
Storage:	Store at -20°C as received.
Stability:	Stable for 12 months from date of receipt.
Predicted Protein Size:	123.8 kDa
Gene Name:	platelet derived growth factor receptor beta
Database Link:	<a href="#">NP_002600</a> <a href="#">Entrez Gene 18596 Mouse</a> <a href="#">Entrez Gene 24629 Rat</a> <a href="#">Entrez Gene 5159 Human</a> <a href="#">P09619</a>



[View online »](#)

**Background:**

This gene encodes a cell surface tyrosine kinase receptor for members of the platelet-derived growth factor family. These growth factors are mitogens for cells of mesenchymal origin. The identity of the growth factor bound to a receptor monomer determines whether the functional receptor is a homodimer or a heterodimer, composed of both platelet-derived growth factor receptor alpha and beta polypeptides. This gene is flanked on chromosome 5 by the genes for granulocyte-macrophage colony-stimulating factor and macrophage-colony stimulating factor receptor; all three genes may be implicated in the 5-q syndrome. A translocation between chromosomes 5 and 12, that fuses this gene to that of the translocation, ETV6, leukemia gene, results in chronic myeloproliferative disorder with eosinophilia. [provided by RefSeq, Jul 2008]

**Synonyms:**

CD140B; IBGC4; IMF1; JTK12; PDGFR; PDGFR-1; PDGFR1

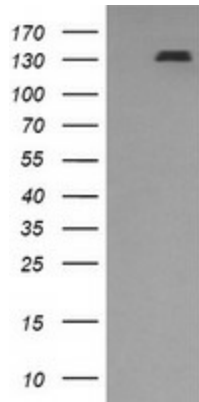
**Protein Families:**

Druggable Genome, ES Cell Differentiation/IPS, Protein Kinase, Transmembrane

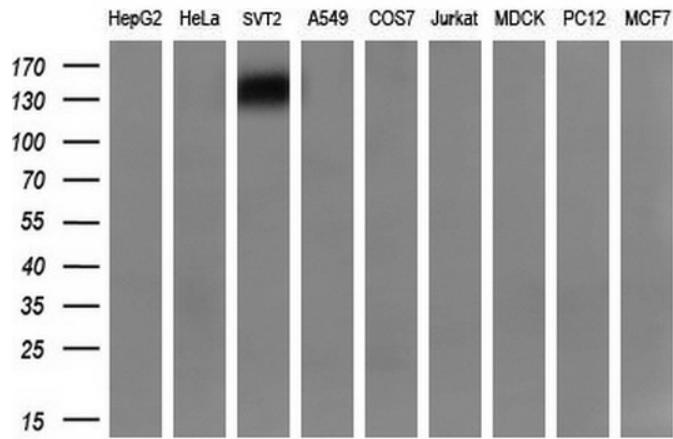
**Protein Pathways:**

Calcium signaling pathway, Colorectal cancer, Cytokine-cytokine receptor interaction, Focal adhesion, Gap junction, Glioma, MAPK signaling pathway, Melanoma, Pathways in cancer, Prostate cancer, Regulation of actin cytoskeleton

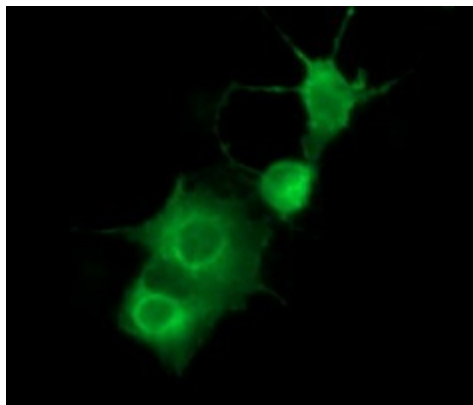
**Product images:**



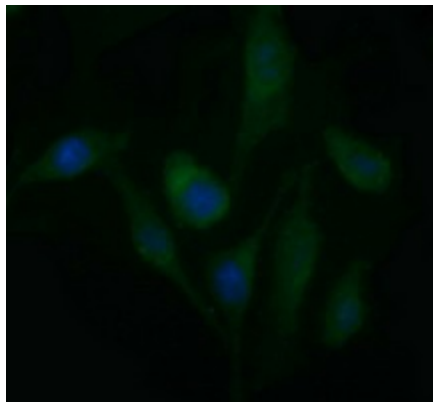
HEK293T cells were transfected with the pCMV6-ENTRY control (Left lane) or pCMV6-ENTRY PDGFRB ([RC206377], Right lane) cDNA for 48 hrs and lysed. Equivalent amounts of cell lysates (5 ug per lane) were separated by SDS-PAGE and immunoblotted with anti-PDGFRB. Positive lysates [LY400921] (100ug) and [LC400921] (20ug) can be purchased separately from OriGene.



Western blot analysis of extracts (35ug) from 9 different cell lines by using anti-PDGFRB monoclonal antibody (HepG2: human; HeLa: human; SVT2: mouse; A549: human; COS7: monkey; Jurkat: human; MDCK: canine; PC12: rat; MCF7: human) (1:200).



Anti-PDGFRB mouse monoclonal antibody ([TA506227]) immunofluorescent staining of COS7 cells transiently transfected by pCMV6-ENTRY PDGFRB ([RC206377]).



Immunofluorescent staining of HeLa cells using anti-PDGFRB mouse monoclonal antibody ([TA506227]).