

## Product datasheet for **TA506224BM**

### EGFR Mouse Monoclonal Antibody (HRP conjugated) [Clone ID: OTI3H2]

#### Product data:

Product Type:	Primary Antibodies
Clone Name:	OTI3H2
Applications:	IF, IHC, WB
Recommended Dilution:	WB 1:4000, IHC 1:150, IF 1:100
Reactivity:	Human, Mouse, Rat
Host:	Mouse
Isotype:	IgG1
Clonality:	Monoclonal
Immunogen:	Full length human recombinant protein of human EGFR(NP_958440) produced in HEK293T cell.
Formulation:	PBS (pH 7.3) containing 1% BSA, 50% glycerol.
Concentration:	0.5 mg/ml
Purification:	Purified from mouse ascites fluids or tissue culture supernatant by affinity chromatography (protein A/G)
Conjugation:	HRP
Storage:	Store at -20°C as received.
Stability:	Stable for 12 months from date of receipt.
Predicted Protein Size:	42.4 kDa
Gene Name:	epidermal growth factor receptor
Database Link:	<a href="#">NP_958440</a> <a href="#">Entrez Gene 13649 Mouse</a> <a href="#">Entrez Gene 24329 Rat</a> <a href="#">Entrez Gene 1956 Human</a> <a href="#">P00533</a>



[View online »](#)

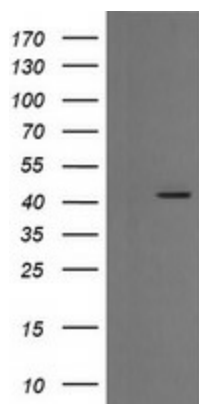
**Background:** The protein encoded by this gene is a transmembrane glycoprotein that is a member of the protein kinase superfamily. This protein is a receptor for members of the epidermal growth factor family. EGFR is a cell surface protein that binds to epidermal growth factor. Binding of the protein to a ligand induces receptor dimerization and tyrosine autophosphorylation and leads to cell proliferation. Mutations in this gene are associated with lung cancer. Multiple alternatively spliced transcript variants that encode different protein isoforms have been found for this gene. [provided by RefSeq, Jul 2010]

**Synonyms:** ERBB; ERBB1; ERBB2; HER1; mENA; NISBD2; PIG61

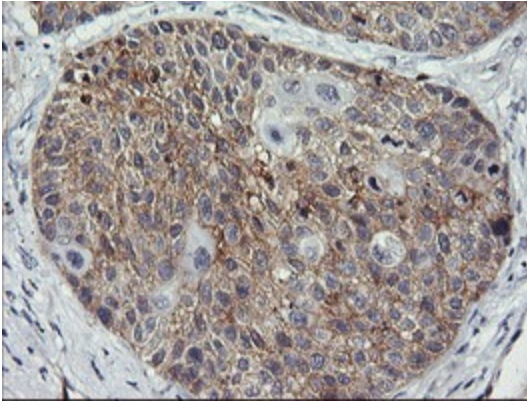
**Protein Families:** Adult stem cells, Cancer stem cells, Druggable Genome, ES Cell Differentiation/IPS, Protein Kinase, Secreted Protein, Stem cell relevant signaling - JAK/STAT signaling pathway, Transmembrane

**Protein Pathways:** Adherens junction, Bladder cancer, Calcium signaling pathway, Colorectal cancer, Cytokine-cytokine receptor interaction, Dorso-ventral axis formation, Endocytosis, Endometrial cancer, Epithelial cell signaling in Helicobacter pylori infection, ErbB signaling pathway, Focal adhesion, Gap junction, Glioma, GnRH signaling pathway, MAPK signaling pathway, Melanoma, Non-small cell lung cancer, Pancreatic cancer, Pathways in cancer, Prostate cancer, Regulation of actin cytoskeleton

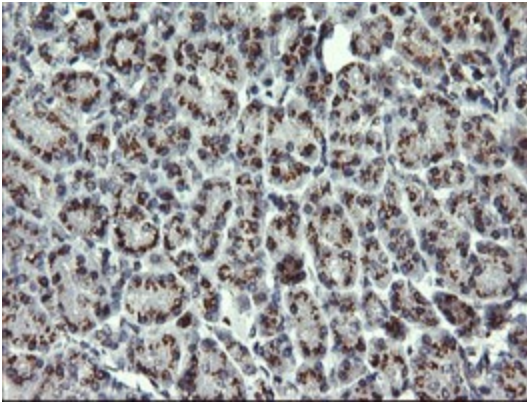
### Product images:



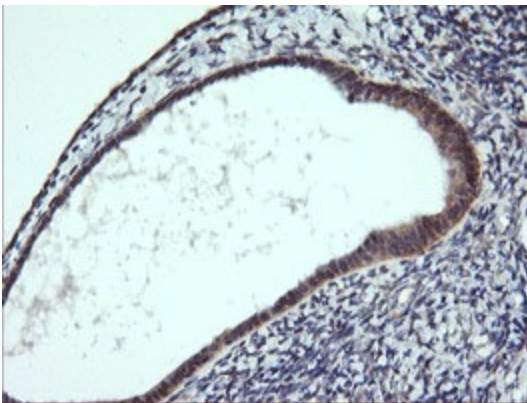
HEK293T cells were transfected with the pCMV6-ENTRY control (Cat# [PS100001], Left lane) or pCMV6-ENTRY EGFR (Cat# [RC214877], Right lane) cDNA for 48 hrs and lysed. Equivalent amounts of cell lysates (5 ug per lane) were separated by SDS-PAGE and immunoblotted with anti-EGFR (Cat# [TA506224]). Positive lysates [LY404515] (100ug) and [LC404515] (20ug) can be purchased separately from OriGene.



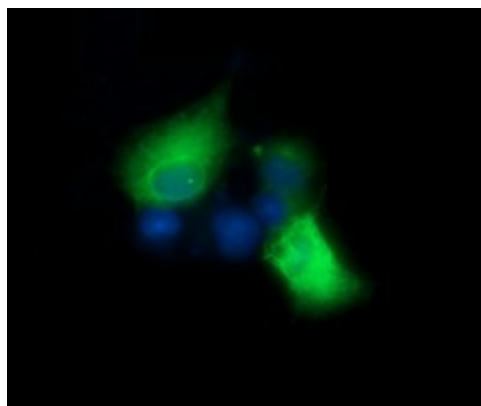
Immunohistochemical staining of paraffin-embedded Carcinoma of Human lung tissue using anti-EGFR mouse monoclonal antibody. (Heat-induced epitope retrieval by 10mM citric buffer, pH6.0, 120°C for 3min, [TA506224])



Immunohistochemical staining of paraffin-embedded Human pancreas tissue within the normal limits using anti-EGFR mouse monoclonal antibody. ([TA506224])



Immunohistochemical staining of paraffin-embedded Human endometrium tissue within the normal limits using anti-EGFR mouse monoclonal antibody. ([TA506224])



Anti-EGFR mouse monoclonal antibody ([TA506224]) immunofluorescent staining of COS7 cells transiently transfected by pCMV6-ENTRY EGFR ([RC214877]).