

## Product datasheet for **TA506201M**

### ERG Mouse Monoclonal Antibody [Clone ID: OTI8A9]

#### Product data:

Product Type:	Primary Antibodies
Clone Name:	OTI8A9
Applications:	IF, IHC, WB
Recommended Dilution:	WB: 1:4000, IHC: 1:150, IF: 1:50-1:100
Reactivity:	Human, Mouse, Rat
Host:	Mouse
Isotype:	IgG2b
Clonality:	Monoclonal
Immunogen:	Full length human recombinant protein of human ERG(NP_891548) produced in HEK293T cell.
Formulation:	PBS (pH 7.3) containing 1% BSA, 50% glycerol and 0.02% sodium azide.
Concentration:	1 mg/ml
Purification:	Purified from mouse ascites fluids or tissue culture supernatant by affinity chromatography (protein A/G)
Conjugation:	Unconjugated
Storage:	Store at -20°C as received.
Stability:	Stable for 12 months from date of receipt.
Predicted Protein Size:	53.7 kDa
Gene Name:	ETS transcription factor ERG
Database Link:	<a href="#">NP_891548</a> <a href="#">Entrez Gene 13876 Mouse</a> <a href="#">Entrez Gene 170909 Rat</a> <a href="#">Entrez Gene 2078 Human</a> <a href="#">P11308</a>


[View online »](#)

**Background:**

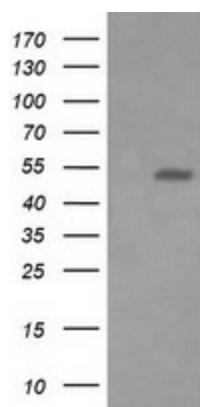
This gene encodes a member of the erythroblast transformation-specific (ETS) family of transcription factors. All members of this family are key regulators of embryonic development, cell proliferation, differentiation, angiogenesis, inflammation, and apoptosis. The protein encoded by this gene is mainly expressed in the nucleus. It contains an ETS DNA-binding domain and a PNT (pointed) domain which is implicated in the self-association of chimeric oncoproteins. This protein is required for platelet adhesion to the subendothelium, inducing vascular cell remodeling. It also regulates hematopoiesis, and the differentiation and maturation of megakaryocytic cells. This gene is involved in chromosomal translocations, resulting in different fusion gene products, such as TMPSSR2-ERG and NDRG1-ERG in prostate cancer, EWS-ERG in Ewing's sarcoma and FUS-ERG in acute myeloid leukemia. Multiple alternatively spliced transcript variants encoding different isoforms have been identified. [provided by RefSeq, Jan

**Synonyms:**

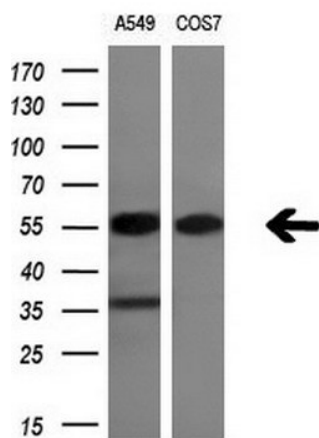
erg-3; p55

**Protein Families:**

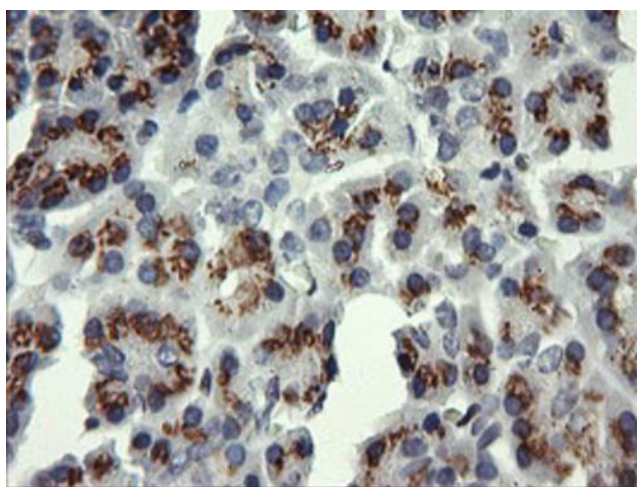
Druggable Genome, Transcription Factors

**Product images:**


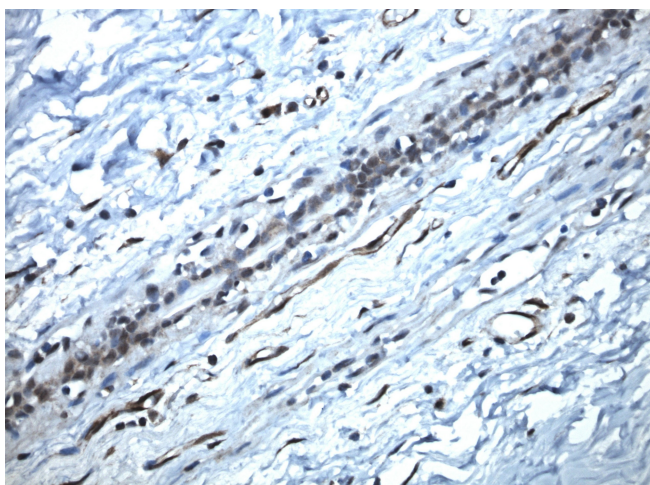
HEK293T cells were transfected with the pCMV6-ENTRY control (Left lane) or pCMV6-ENTRY ERG ([RC208093], Right lane) cDNA for 48 hrs and lysed. Equivalent amounts of cell lysates (5 ug per lane) were separated by SDS-PAGE and immunoblotted with anti-ERG. Positive lysates [LY403650] (100ug) and [LC403650] (20ug) can be purchased separately from OriGene.



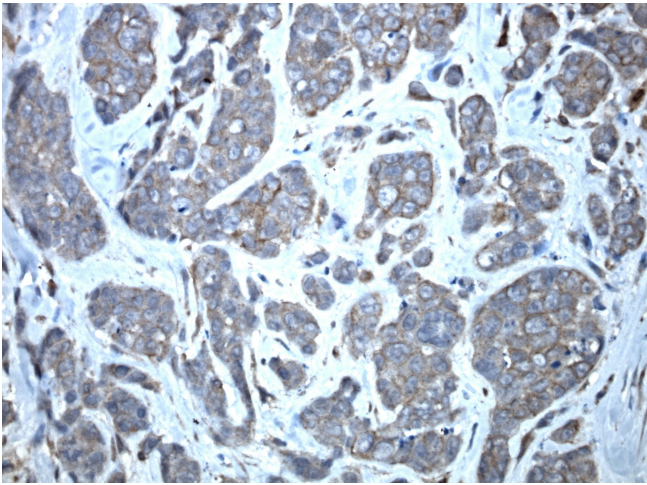
Western blot analysis of extracts (10ug) from 2 different cell lines by using anti-ERG monoclonal antibody (1:200).



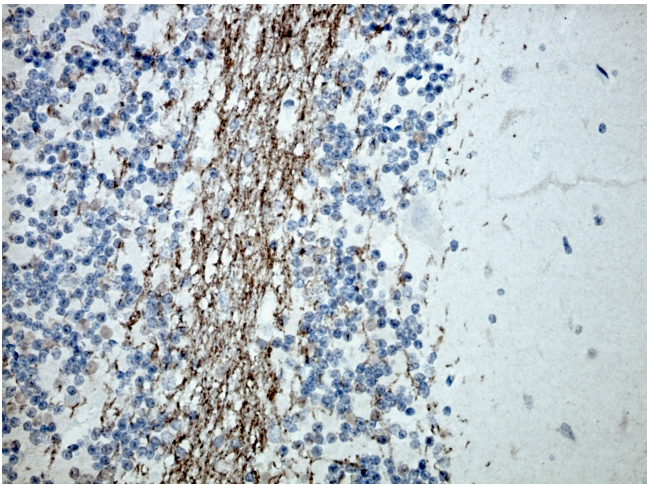
Immunohistochemical staining of paraffin-embedded Human pancreas tissue within the normal limits using anti-ERG mouse monoclonal antibody. Heat-induced epitope retrieval by EDTA solution buffer pH 8.0 at 120°C for 3 min.



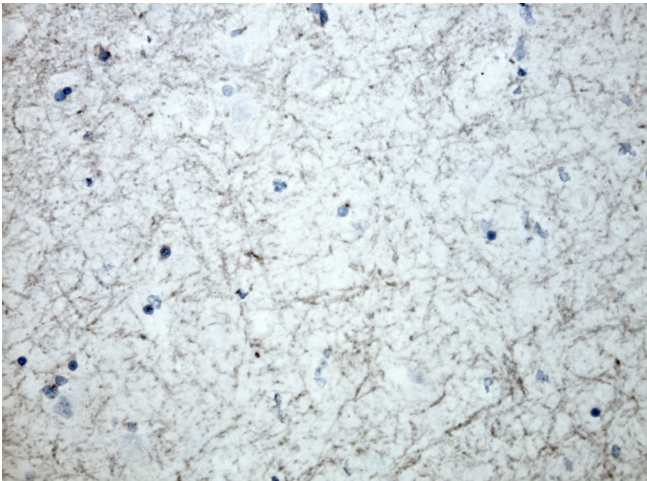
Immunohistochemical staining of paraffin-embedded normal breast using ERG antibody [TA506201] clone OTI8A9 mouse monoclonal antibody. Protocol used HIER TEE pH9.0 (cat# [B21-100]) and anti- ERG at 1:5000 dilution. Detection was done with Polink1 Broad Mouse and Rabbit C/N [D11-18] with DAB Kit. Image 40x magnification.



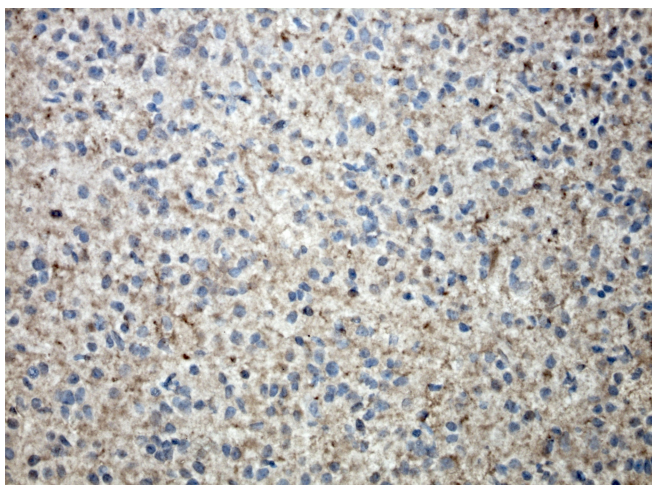
Immunohistochemical staining of paraffin-embedded breast cancer using ERG antibody [TA506201] clone OTI8A9 mouse monoclonal antibody. Protocol used HIER TEE pH9.0 (cat# [B21-100]) and anti- ERG at 1:5000 dilution. Detection was done with Polink1 Broad Mouse and Rabbit C/N [D11-18] with DAB Kit. Image 40x magnification.



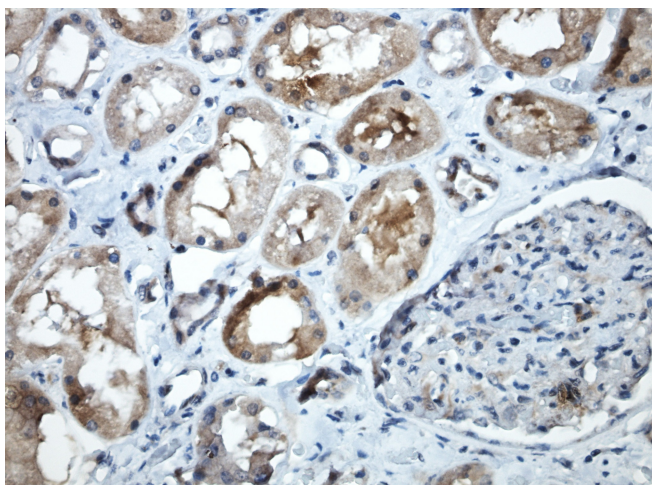
Immunohistochemical staining of paraffin-embedded cerebellum using ERG antibody [TA506201] clone OTI8A9 mouse monoclonal antibody. Protocol used HIER TEE pH9.0 (cat# [B21-100]) and anti- ERG at 1:5000 dilution. Detection was done with Polink1 Broad Mouse and Rabbit C/N [D11-18] with DAB Kit. Image 40x magnification.



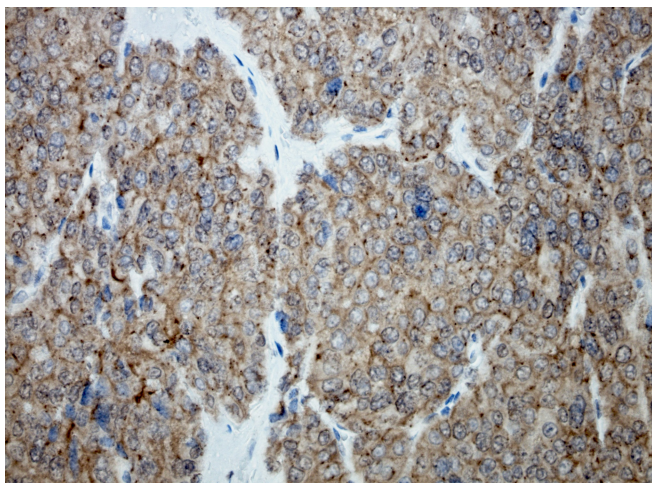
Immunohistochemical staining of paraffin-embedded brain using ERG antibody [TA506201] clone OTI8A9 mouse monoclonal antibody. Protocol used HIER TEE pH9.0 (cat# [B21-100]) and anti- ERG at 1:5000 dilution. Detection was done with Polink1 Broad Mouse and Rabbit C/N [D11-18] with DAB Kit. Image 40x magnification.



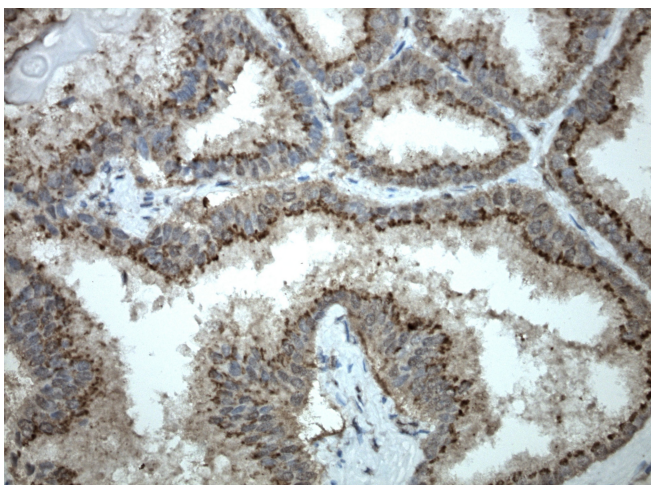
Immunohistochemical staining of paraffin-embedded glioma using ERG antibody [TA506201] clone OTI8A9 mouse monoclonal antibody. Protocol used HIER TEE pH9.0 (cat# [B21-100]) and anti- ERG at 1:10000 dilution. Detection was done with Polink1 Broad Mouse and Rabbit C/N [D11-18] with DAB Kit. Image 40x magnification.



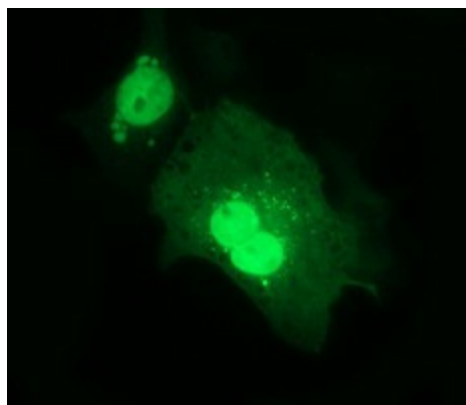
Immunohistochemical staining of paraffin-embedded kidney using ERG antibody [TA506201] clone OTI8A9 mouse monoclonal antibody. Protocol used HIER TEE pH9.0 (cat# [B21-100]) and anti- ERG at 1:10000 dilution. Detection was done with Polink1 Broad Mouse and Rabbit C/N [D11-18] with DAB Kit. Image 40x magnification.



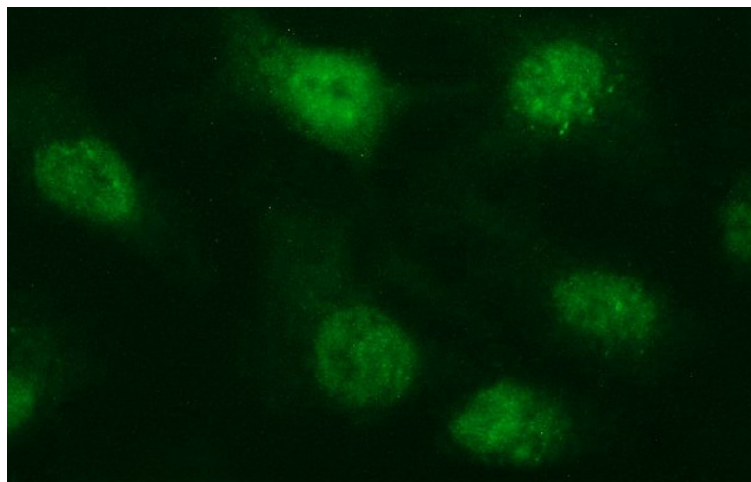
Immunohistochemical staining of paraffin-embedded renal cell cancer metastasis using ERG antibody [TA506201] clone OTI8A9 mouse monoclonal antibody. Protocol used HIER TEE pH9.0 (cat# [B21-100]) and anti- ERG at 1:10000 dilution. Detection was done with Polink1 Broad Mouse and Rabbit C/N [D11-18] with DAB Kit. Image 40x magnification.



Immunohistochemical staining of paraffin-embedded prostate cancer using ERG antibody [TA506201] clone OTI8A9 mouse monoclonal antibody. Protocol used HIER TEE pH9.0 (cat# [B21-100]) and anti-ERG at 1:10000 dilution. Detection was done with Polink1 Broad Mouse and Rabbit C/N [D11-18] with DAB Kit. Image 40x magnification.



Anti-ERG mouse monoclonal antibody ([TA506201]) immunofluorescent staining of COS7 cells transiently transfected by pCMV6-ENTRY ERG ([RC208093]) at 1:100



Immunofluorescent staining of HeLa cells using anti-ERG mouse monoclonal antibody ([TA506201]) at 1:100