

## Product datasheet for **TA506200**

### ACAA2 Mouse Monoclonal Antibody [Clone ID: OTI3H9]

#### Product data:

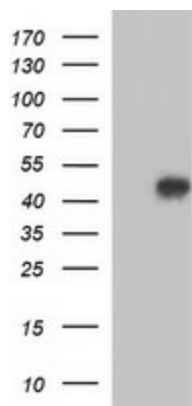
Product Type:	Primary Antibodies
Clone Name:	OTI3H9
Applications:	IF, IHC, WB
Recommended Dilution:	WB 1:4000, IHC 1:150, IF 1:100
Reactivity:	Human, Mouse, Rat
Host:	Mouse
Isotype:	IgG2b
Clonality:	Monoclonal
Immunogen:	Full length human recombinant protein of human ACAA2(NP_006102) produced in HEK293T cell.
Formulation:	PBS (pH 7.3) containing 1% BSA, 50% glycerol and 0.02% sodium azide.
Concentration:	1 mg/ml
Purification:	Purified from mouse ascites fluids or tissue culture supernatant by affinity chromatography (protein A/G)
Conjugation:	Unconjugated
Storage:	Store at -20°C as received.
Stability:	Stable for 12 months from date of receipt.
Predicted Protein Size:	41.7 kDa
Gene Name:	acetyl-CoA acyltransferase 2
Database Link:	<a href="#">NP_006102</a> <a href="#">Entrez Gene 52538 Mouse</a> <a href="#">Entrez Gene 170465 Rat</a> <a href="#">Entrez Gene 10449 Human</a> <a href="#">P42765</a>
Background:	The encoded protein catalyzes the last step of the mitochondrial fatty acid beta-oxidation spiral. Unlike most mitochondrial matrix proteins, it contains a non-cleavable amino-terminal targeting signal. [provided by RefSeq, Jul 2008]
Synonyms:	DSAEC



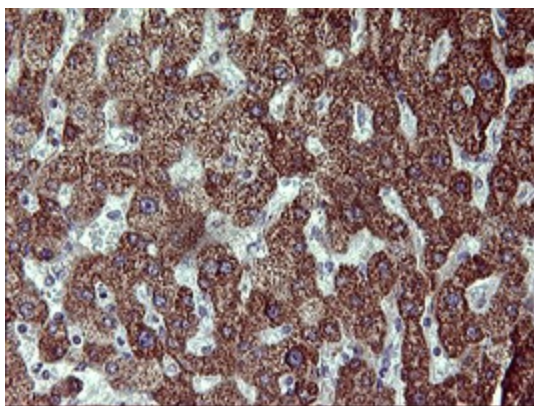
[View online »](#)

**Protein Pathways:** Fatty acid elongation in mitochondria, Fatty acid metabolism, Metabolic pathways, Valine, leucine and isoleucine degradation

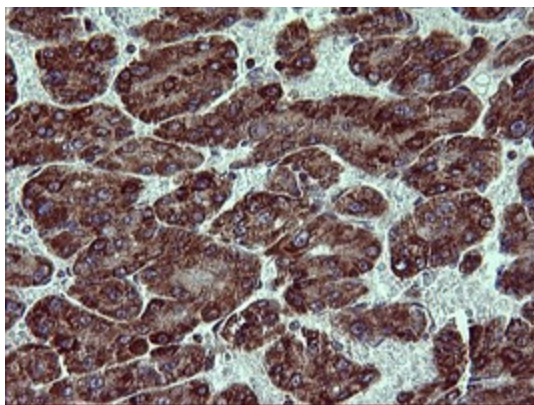
**Product images:**



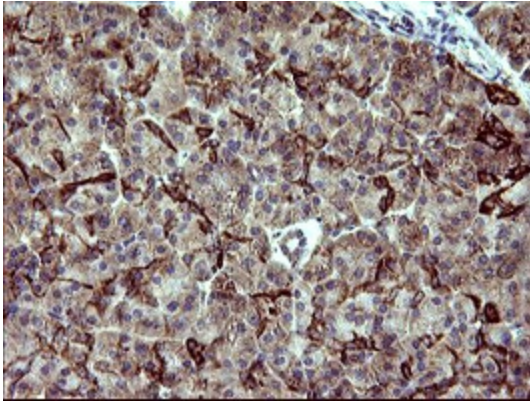
HEK293T cells were transfected with the pCMV6-ENTRY control (Left lane) or pCMV6-ENTRY ACAA2 ([RC201096], Right lane) cDNA for 48 hrs and lysed. Equivalent amounts of cell lysates (5 ug per lane) were separated by SDS-PAGE and immunoblotted with anti-ACAA2. Positive lysates [LY401843] (100ug) and [LC401843] (20ug) can be purchased separately from OriGene.



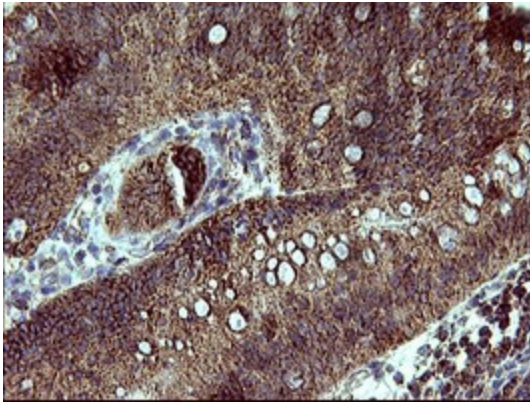
Immunohistochemical staining of paraffin-embedded Human liver tissue within the normal limits using anti-ACAA2 mouse monoclonal antibody. (Heat-induced epitope retrieval by 10mM citric buffer, pH6.0, 120°C for 3min, TA506200)



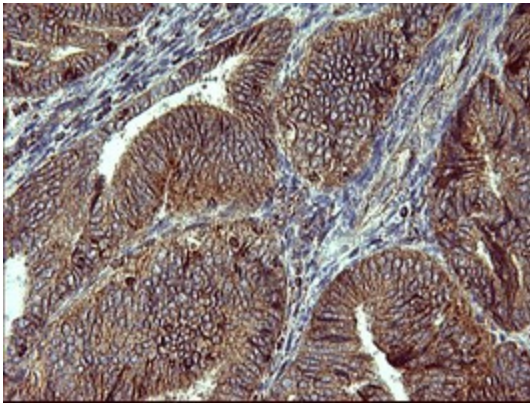
Immunohistochemical staining of paraffin-embedded Carcinoma of Human liver tissue using anti-ACAA2 mouse monoclonal antibody. (Heat-induced epitope retrieval by 10mM citric buffer, pH6.0, 120°C for 3min, TA506200)



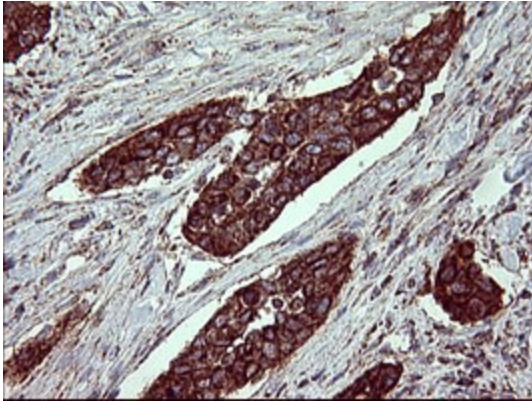
Immunohistochemical staining of paraffin-embedded Human pancreas tissue within the normal limits using anti-ACAA2 mouse monoclonal antibody. (Heat-induced epitope retrieval by 10mM citric buffer, pH6.0, 120°C for 3min, TA506200)



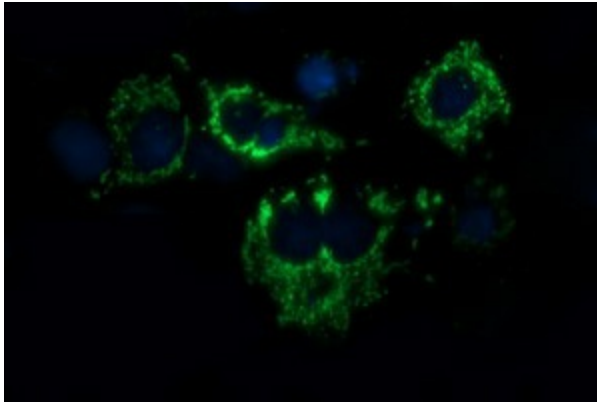
Immunohistochemical staining of paraffin-embedded Carcinoma of Human pancreas tissue using anti-ACAA2 mouse monoclonal antibody. (Heat-induced epitope retrieval by 10mM citric buffer, pH6.0, 120°C for 3min, TA506200)



Immunohistochemical staining of paraffin-embedded Adenocarcinoma of Human endometrium tissue using anti-ACAA2 mouse monoclonal antibody. (Heat-induced epitope retrieval by 10mM citric buffer, pH6.0, 120°C for 3min, TA506200)



Immunohistochemical staining of paraffin-embedded Carcinoma of Human bladder tissue using anti-ACAA2 mouse monoclonal antibody. (Heat-induced epitope retrieval by 10mM citric buffer, pH6.0, 120°C for 3min, TA506200)



Anti-ACAA2 mouse monoclonal antibody (TA506200) immunofluorescent staining of COS7 cells transiently transfected by pCMV6-ENTRY ACAA2 ([RC201096]).