

Product datasheet for **TA506192AM**

Lysozyme (LYZ) Mouse Monoclonal Antibody (Biotin conjugated) [Clone ID: OTI1D8]

Product data:

Product Type:	Primary Antibodies
Clone Name:	OTI1D8
Applications:	IF, WB
Recommended Dilution:	WB 1:4000, IF 1:100
Reactivity:	Human
Host:	Mouse
Isotype:	IgG1
Clonality:	Monoclonal
Immunogen:	Full length human recombinant protein of human LYZ(NP_000230) produced in HEK293T cell.
Formulation:	PBS (pH 7.3) containing 1% BSA, 50% glycerol and 0.02% sodium azide.
Concentration:	0.5 mg/ml
Purification:	Purified from mouse ascites fluids or tissue culture supernatant by affinity chromatography (protein A/G)
Conjugation:	Biotin
Storage:	Store at -20°C as received.
Stability:	Stable for 12 months from date of receipt.
Predicted Protein Size:	14.7 kDa
Gene Name:	lysozyme
Database Link:	NP_000230 Entrez Gene 4069 Human P61626
Background:	This gene encodes human lysozyme, whose natural substrate is the bacterial cell wall peptidoglycan (cleaving the beta[1-4]glycosidic linkages between N-acetylmuramic acid and N-acetylglucosamine). Lysozyme is one of the anti-microbial agents found in human milk, and is also present in spleen, lung, kidney, white blood cells, plasma, saliva, and tears. Missense mutations in LYZ have been identified in heritable renal amyloidosis. [provided by RefSeq, Jul 2008]

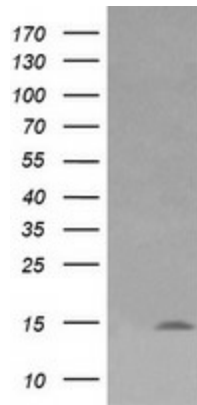


[View online »](#)

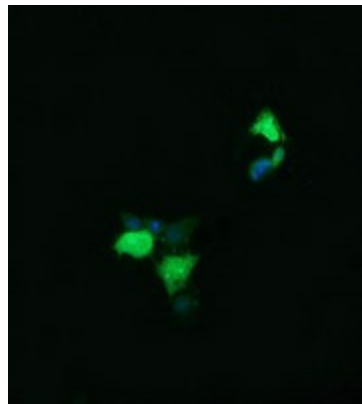
Synonyms: LYZF1; LZM

Protein Families: Druggable Genome

Product images:



HEK293T cells were transfected with the pCMV6-ENTRY control (Left lane) or pCMV6-ENTRY LYZ ([RC200730], Right lane) cDNA for 48 hrs and lysed. Equivalent amounts of cell lysates (5 ug per lane) were separated by SDS-PAGE and immunoblotted with anti-LYZ. Positive lysates [LY400091] (100ug) and [LC400091] (20ug) can be purchased separately from OriGene.



Anti-LYZ mouse monoclonal antibody ([TA506192]) immunofluorescent staining of COS7 cells transiently transfected by pCMV6-ENTRY LYZ ([RC200730]).