

## Product datasheet for **TA506169BM**

### CD105 (ENG) Mouse Monoclonal Antibody (HRP conjugated) [Clone ID: OTI9E5]

#### Product data:

Product Type:	Primary Antibodies
Clone Name:	OTI9E5
Applications:	IF, WB
Recommended Dilution:	WB 1:200~4000, IF 1:100
Reactivity:	Human
Host:	Mouse
Isotype:	IgG1
Clonality:	Monoclonal
Immunogen:	Full length human recombinant protein of human ENg(NP_000109) produced in HEK293T cell.
Formulation:	PBS (pH 7.3) containing 1% BSA, 50% glycerol.
Concentration:	0.5 mg/ml
Purification:	Purified from mouse ascites fluids or tissue culture supernatant by affinity chromatography (protein A/G)
Conjugation:	HRP
Storage:	Store at -20°C as received.
Stability:	Stable for 12 months from date of receipt.
Predicted Protein Size:	65 kDa
Gene Name:	endoglin
Database Link:	<a href="#">NP_000109</a> <a href="#">Entrez Gene 2022 Human P17813</a>



[View online »](#)

**Background:**

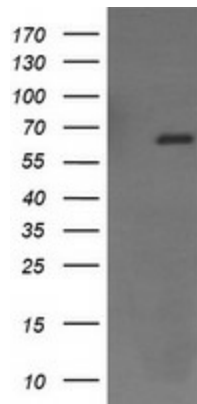
This gene encodes a homodimeric transmembrane protein which is a major glycoprotein of the vascular endothelium. This protein is a component of the transforming growth factor beta receptor complex and it binds TGF $\beta$ 1 and TGF $\beta$ 3 with high affinity. Mutations in this gene cause hereditary hemorrhagic telangiectasia, also known as Osler-Rendu-Weber syndrome 1, an autosomal dominant multisystemic vascular dysplasia. Alternatively spliced transcript variants encoding different isoforms have been found for this gene. [provided by RefSeq, Sep 2008]

**Synonyms:**

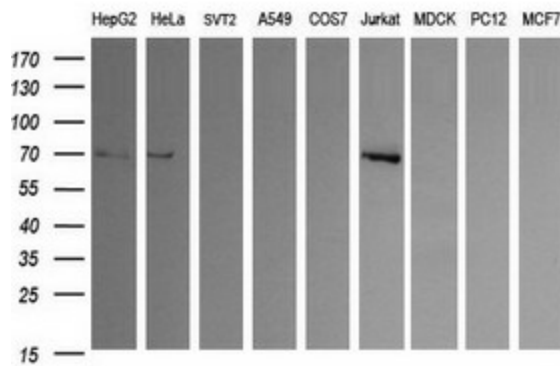
END; HHT1; ORW1

**Protein Families:**

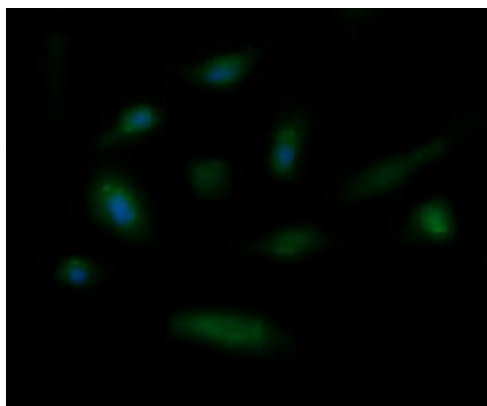
Druggable Genome, ES Cell Differentiation/IPS, Transmembrane

**Product images:**


HEK293T cells were transfected with the pCMV6-ENTRY control (Left lane) or pCMV6-ENTRY ENG ([RC221699], Right lane) cDNA for 48 hrs and lysed. Equivalent amounts of cell lysates (5 ug per lane) were separated by SDS-PAGE and immunoblotted with anti-ENG. Positive lysates [LY424919] (100ug) and [LC424919] (20ug) can be purchased separately from OriGene.



Western blot analysis of extracts (35ug) from 9 different cell lines by using anti-ENG monoclonal antibody (HepG2: human; HeLa: human; SVT2: mouse; A549: human; COS7: monkey; Jurkat: human; MDCK: canine; PC12: rat; MCF7: human).



Immunofluorescent staining of HeLa cells using anti-ENG mouse monoclonal antibody ([TA506169]).