

Product datasheet for **TA506160**

DDX58 Mouse Monoclonal Antibody [Clone ID: OTI7D5]

Product data:

Product Type:	Primary Antibodies
Clone Name:	OTI7D5
Applications:	IHC, WB
Recommended Dilution:	WB 1:1000
Reactivity:	Human
Host:	Mouse
Isotype:	IgG2b
Clonality:	Monoclonal
Immunogen:	Full length human recombinant protein of human DDX58(NP_055129) produced in HEK293T cell.
Formulation:	PBS (pH 7.3) containing 1% BSA, 50% glycerol and 0.02% sodium azide.
Concentration:	1 mg/ml
Purification:	Purified from mouse ascites fluids or tissue culture supernatant by affinity chromatography (protein A/G)
Conjugation:	Unconjugated
Storage:	Store at -20°C as received.
Stability:	Stable for 12 months from date of receipt.
Predicted Protein Size:	106.4 kDa
Gene Name:	DExD/H-box helicase 58
Database Link:	NP_055129 Entrez Gene 23586 Human O95786
Background:	DEAD box proteins, characterized by the conserved motif Asp-Glu-Ala-Asp (DEAD), are putative RNA helicases which are implicated in a number of cellular processes involving RNA binding and alteration of RNA secondary structure. This gene encodes a protein containing RNA helicase-DEAD box protein motifs and a caspase recruitment domain (CARD). It is involved in viral double-stranded (ds) RNA recognition and the regulation of immune response. [provided by RefSeq, Jul 2008]

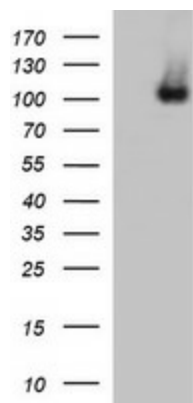


[View online »](#)

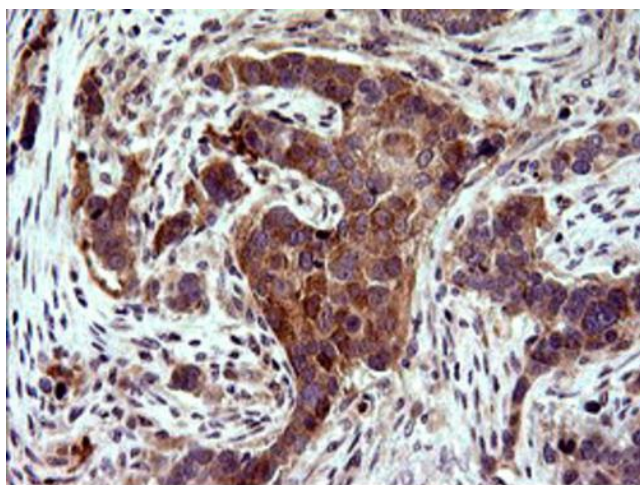
Synonyms: RIG-I; RIGI; RLR-1

Protein Pathways: Cytosolic DNA-sensing pathway, RIG-I-like receptor signaling pathway

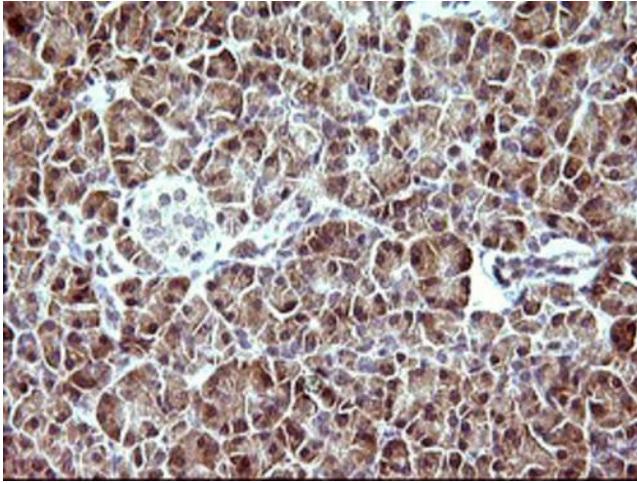
Product images:



HEK293T cells were transfected with the pCMV6-ENTRY control (Left lane) or pCMV6-ENTRY DDX58 ([RC217615], Right lane) cDNA for 48 hrs and lysed. Equivalent amounts of cell lysates (5 ug per lane) were separated by SDS-PAGE and immunoblotted with anti-DDX58. Positive lysates [LY415370] (100ug) and [LC415370] (20ug) can be purchased separately from OriGene.



Immunohistochemical staining of paraffin-embedded Carcinoma of Human lung tissue using anti-DDX58 mouse monoclonal antibody. (TA506160). Heat-induced epitope retrieval by EDTA solution buffer pH 8.0 at 120°C for 3 min.



Immunohistochemical staining of paraffin-embedded Human pancreas tissue within the normal limits using anti-DDX58 mouse monoclonal antibody. (TA506160). Heat-induced epitope retrieval by EDTA solution buffer pH 8.0 at 120°C for 3 min.



Immunohistochemical staining of paraffin-embedded Human endometrium tissue within the normal limits using anti-DDX58 mouse monoclonal antibody. (TA506160). Heat-induced epitope retrieval by EDTA solution buffer pH 8.0 at 120°C for 3 min.