

Product datasheet for **TA506153M**

DRP1 (DNM1L) Mouse Monoclonal Antibody [Clone ID: OTI4F6]

Product data:

Product Type:	Primary Antibodies
Clone Name:	OTI4F6
Applications:	IHC, WB
Recommended Dilution:	WB 1:200~4000, IHC 1:150
Reactivity:	Human, Dog, Rat, Monkey, Mouse
Host:	Mouse
Isotype:	IgG2b
Clonality:	Monoclonal
Immunogen:	Full length human recombinant protein of human DNM1L(NP_036192) produced in HEK293T cell.
Formulation:	PBS (pH 7.3) containing 1% BSA, 50% glycerol and 0.02% sodium azide.
Concentration:	1 mg/ml
Purification:	Purified from mouse ascites fluids or tissue culture supernatant by affinity chromatography (protein A/G)
Conjugation:	Unconjugated
Storage:	Store at -20°C as received.
Stability:	Stable for 12 months from date of receipt.
Predicted Protein Size:	81.7 kDa
Gene Name:	dynamin 1 like
Database Link:	NP_036192 Entrez Gene 74006 Mouse Entrez Gene 114114 Rat Entrez Gene 477649 Dog Entrez Gene 695388 Monkey Entrez Gene 10059 Human O00429


[View online »](#)

Background:

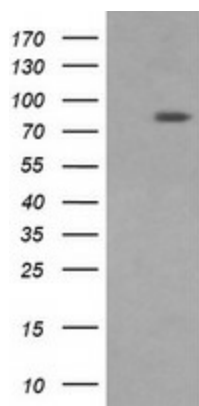
The protein encoded by this gene is a member of the dynamin superfamily of GTPases. Members of the dynamin-related subfamily, including the *S. cerevisiae* proteins Dnm1 and Vps1, contain the N-terminal tripartite GTPase domain but do not have the pleckstrin homology or proline-rich domains. This protein establishes mitochondrial morphology through a role in distributing mitochondrial tubules throughout the cytoplasm. The gene has 3 alternatively spliced transcripts encoding different isoforms. These transcripts are alternatively polyadenylated. [provided by RefSeq, Jul 2008]

Synonyms:

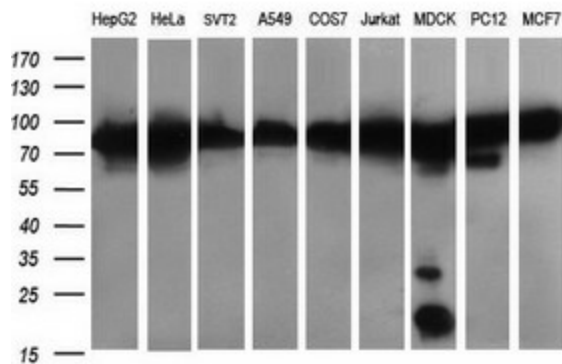
DLP1; DRP1; DVLP; DYMPLE; EMPF; EMPF1; HDYNIV

Protein Pathways:

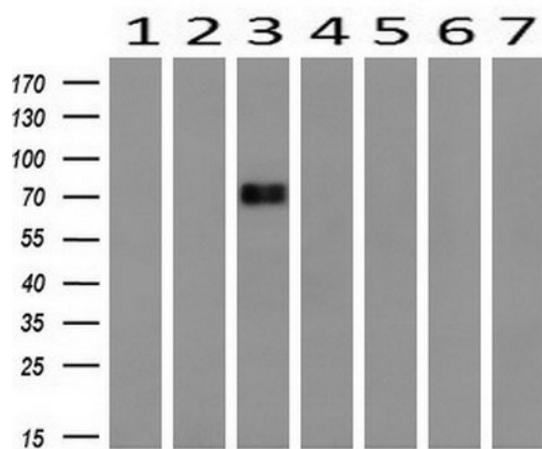
Endocytosis, Fc gamma R-mediated phagocytosis

Product images:


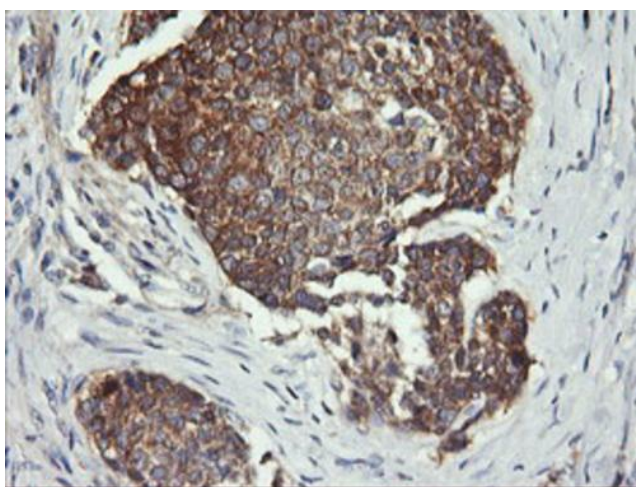
HEK293T cells were transfected with the pCMV6-ENTRY control (Cat# [PS100001], Left lane) or pCMV6-ENTRY DNEM1L (Cat# [RC221708], Right lane) cDNA for 48 hrs and lysed. Equivalent amounts of cell lysates (5 ug per lane) were separated by SDS-PAGE and immunoblotted with anti-DNEM1L (Cat# [TA506153]). Positive lysates [LY402138] (100ug) and [LC402138] (20ug) can be purchased separately from OriGene.



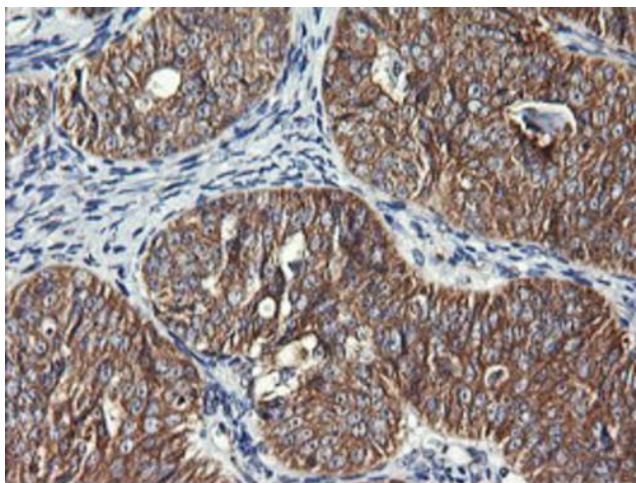
Western blot analysis of extracts (35ug) from 9 different cell lines by using anti-DNEM1L monoclonal antibody (HepG2: human; HeLa: human; SVT2: mouse; A549: human; COS7: monkey; Jurkat: human; MDCK: canine; PC12: rat; MCF7: human).



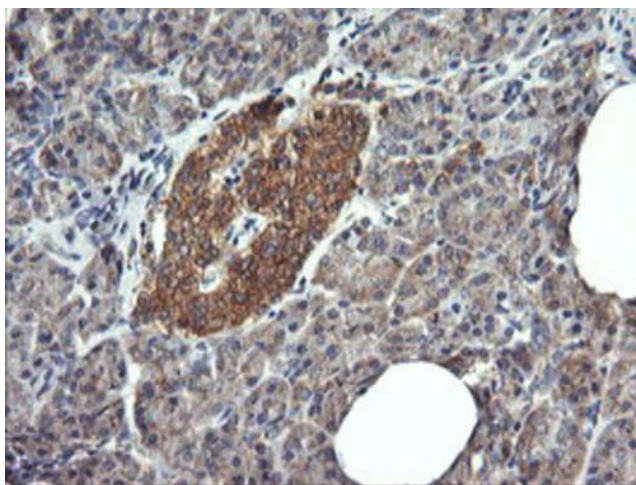
Western blot analysis of extracts (10ug) from 7 Human tissue by using anti-DNM1L monoclonal antibody (1: Uterus; 2: Breast; 3: Brain; 4: Liver; 5: Ovary; 6: Thyroid gland; 7: colon) at 1:200 dilution.



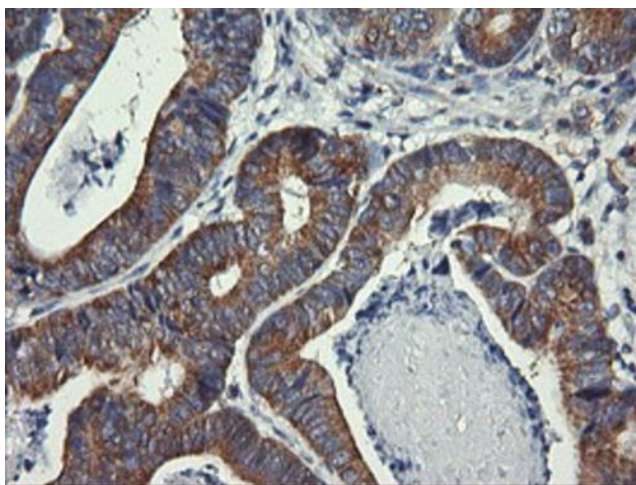
Immunohistochemical staining of paraffin-embedded Carcinoma of Human lung tissue using anti-DNM1L mouse monoclonal antibody. Heat-induced epitope retrieval by EDTA solution buffer pH 8.0 at 120°C for 3 min.



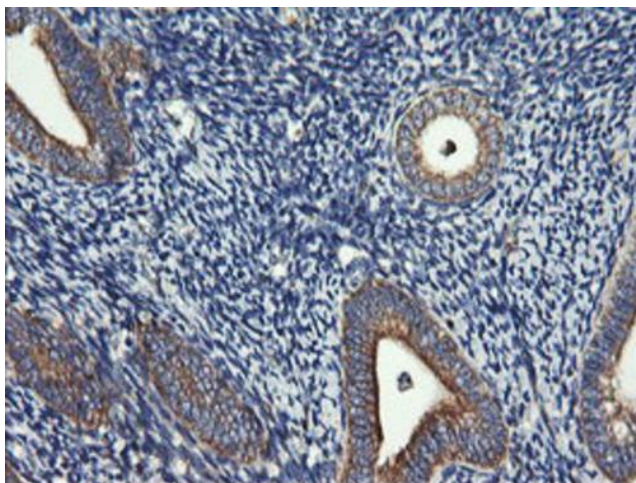
Immunohistochemical staining of paraffin-embedded Adenocarcinoma of Human ovary tissue using anti-DNM1L mouse monoclonal antibody. Heat-induced epitope retrieval by EDTA solution buffer pH 8.0 at 120°C for 3 min.



Immunohistochemical staining of paraffin-embedded Human pancreas tissue within the normal limits using anti-DNM1L mouse monoclonal antibody. Heat-induced epitope retrieval by EDTA solution buffer pH 8.0 at 120°C for 3 min.



Immunohistochemical staining of paraffin-embedded Carcinoma of Human pancreas tissue using anti-DNM1L mouse monoclonal antibody. Heat-induced epitope retrieval by EDTA solution buffer pH 8.0 at 120°C for 3 min.



Immunohistochemical staining of paraffin-embedded Human endometrium tissue within the normal limits using anti-DNM1L mouse monoclonal antibody. Heat-induced epitope retrieval by EDTA solution buffer pH 8.0 at 120°C for 3 min.