

Product datasheet for **TA506149AM**

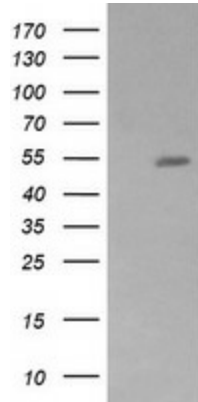
ZFP38 (ZSCAN21) Mouse Monoclonal Antibody (Biotin conjugated) [Clone ID: OTI2D8]

Product data:

Product Type:	Primary Antibodies
Clone Name:	OTI2D8
Applications:	WB
Recommended Dilution:	WB 1:4000
Reactivity:	Human
Host:	Mouse
Isotype:	IgG1
Clonality:	Monoclonal
Immunogen:	Full length human recombinant protein of human ZSCAN21(NP_666019) produced in HEK293T cell.
Formulation:	PBS (pH 7.3) containing 1% BSA, 50% glycerol and 0.02% sodium azide.
Concentration:	0.5 mg/ml
Purification:	Purified from mouse ascites fluids or tissue culture supernatant by affinity chromatography (protein A/G)
Conjugation:	Biotin
Storage:	Store at -20°C as received.
Stability:	Stable for 12 months from date of receipt.
Predicted Protein Size:	53.5 kDa
Gene Name:	zinc finger and SCAN domain containing 21
Database Link:	NP_666019 Entrez Gene 7589 Human Q9Y5A6
Synonyms:	NY-REN-21; Zipro1; ZNF38
Protein Families:	Transcription Factors



[View online »](#)

Product images:

HEK293T cells were transfected with the pCMV6-ENTRY control (Left lane) or pCMV6-ENTRY ZSCAN21 ([RC208411], Right lane) cDNA for 48 hrs and lysed. Equivalent amounts of cell lysates (5 ug per lane) were separated by SDS-PAGE and immunoblotted with anti-ZSCAN21. Positive lysates [LY407804] (100ug) and [LC407804] (20ug) can be purchased separately from OriGene.