

## Product datasheet for **TA506139M**

### LMO2 Mouse Monoclonal Antibody [Clone ID: OTI1C8]

#### Product data:

Product Type:	Primary Antibodies
Clone Name:	OTI1C8
Applications:	IHC
Recommended Dilution:	IHC 1:150
Reactivity:	Human, Mouse, Rat
Host:	Mouse
Isotype:	IgG1
Clonality:	Monoclonal
Immunogen:	Full length human recombinant protein of human LMO2(NP_005565) produced in HEK293T cell.
Formulation:	PBS (pH 7.3) containing 1% BSA, 50% glycerol and 0.02% sodium azide.
Concentration:	1 mg/ml
Purification:	Purified from mouse ascites fluids or tissue culture supernatant by affinity chromatography (protein A/G)
Conjugation:	Unconjugated
Storage:	Store at -20°C as received.
Stability:	Stable for 12 months from date of receipt.
Predicted Protein Size:	18.2 kDa
Gene Name:	LIM domain only 2
Database Link:	<a href="#">NP_005565</a> <a href="#">Entrez Gene 16909 Mouse</a> <a href="#">Entrez Gene 362176 Rat</a> <a href="#">Entrez Gene 4005 Human</a> <a href="#">P25791</a>



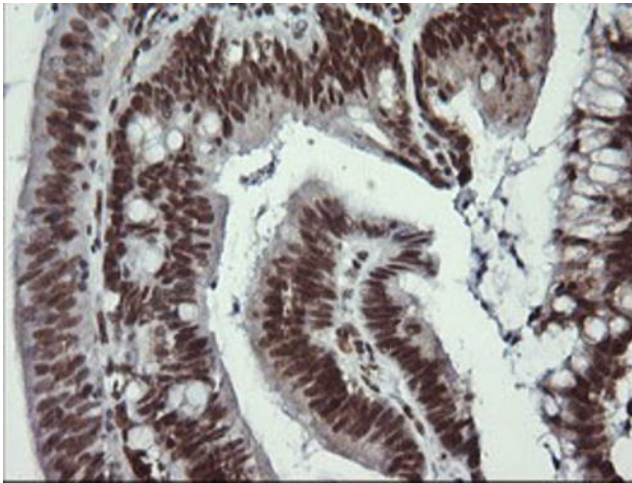
[View online »](#)

**Background:** LMO2 encodes a cysteine-rich, two LIM-domain protein that is required for yolk sac erythropoiesis. The LMO2 protein has a central and crucial role in hematopoietic development and is highly conserved. The LMO2 transcription start site is located approximately 25 kb downstream from the 11p13 T-cell translocation cluster (11p13 ttc), where a number T-cell acute lymphoblastic leukemia-specific translocations occur. Alternative splicing results in multiple transcript variants encoding different isoforms. [provided by RefSeq, Nov 2008]

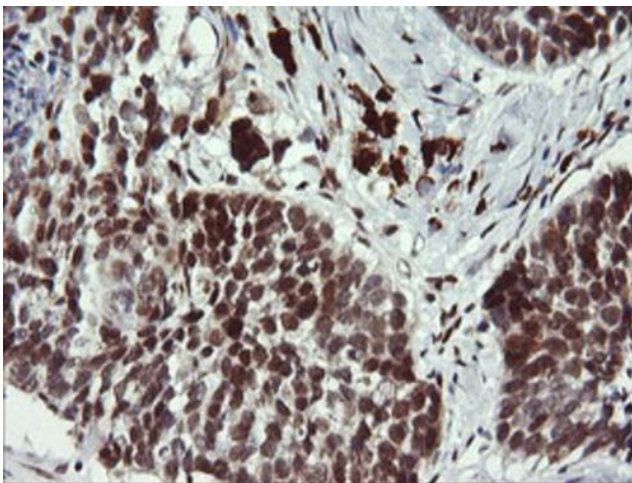
**Synonyms:** RBTN2; RBTN1; RHOM2; TTG2

**Protein Families:** Druggable Genome

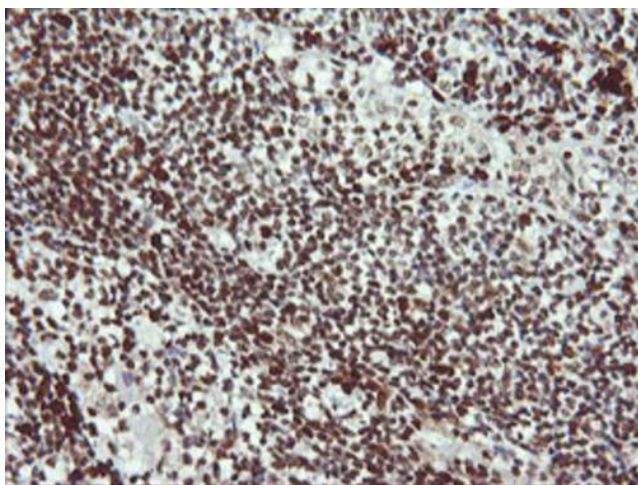
**Product images:**



Immunohistochemical staining of paraffin-embedded Adenocarcinoma of Human colon tissue using anti-LMO2 mouse monoclonal antibody. Heat-induced epitope retrieval by EDTA solution buffer pH 8.0 at 120°C for 3 min.



Immunohistochemical staining of paraffin-embedded Carcinoma of Human lung tissue using anti-LMO2 mouse monoclonal antibody. Heat-induced epitope retrieval by EDTA solution buffer pH 8.0 at 120°C for 3 min.



Immunohistochemical staining of paraffin-embedded Human lymphoma tissue using anti-LMO2 mouse monoclonal antibody. Heat-induced epitope retrieval by EDTA solution buffer pH 8.0 at 120°C for 3 min.