

## Product datasheet for **TA506139AM**

### LMO2 Mouse Monoclonal Antibody (Biotin conjugated) [Clone ID: OT11C8]

#### Product data:

|                         |  |
|-------------------------|--|
| Product Type:           | Primary Antibodies   |
| Clone Name:             | OT11C8   |
| Applications:           | IHC, WB  |
| Recommended Dilution:   | WB 1:4000, IHC 1:150   |
| Reactivity:             | Human, Mouse, Rat  |
| Host:                   | Mouse  |
| Isotype:                | IgG1   |
| Clonality:              | Monoclonal   |
| Immunogen:              | Full length human recombinant protein of human LMO2(NP_005565) produced in HEK293T cell.   |
| Formulation:            | PBS (pH 7.3) containing 1% BSA, 50% glycerol and 0.02% sodium azide.   |
| Concentration:          | 0.5 mg/ml  |
| Purification:           | Purified from mouse ascites fluids or tissue culture supernatant by affinity chromatography (protein A/G)  |
| Conjugation:            | Biotin   |
| Storage:                | Store at -20°C as received.  |
| Stability:              | Stable for 12 months from date of receipt.   |
| Predicted Protein Size: | 18.2 kDa   |
| Gene Name:              | LIM domain only 2  |
| Database Link:          | <a href="#">NP_005565</a><br><a href="#">Entrez Gene 16909 Mouse</a> <a href="#">Entrez Gene 362176 Rat</a> <a href="#">Entrez Gene 4005 Human</a><br><a href="#">P25791</a> |



[View online »](#)

**Background:**

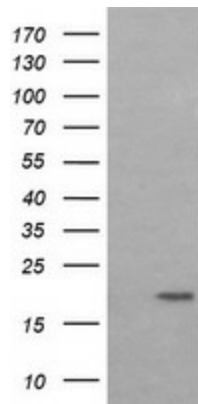
LMO2 encodes a cysteine-rich, two LIM-domain protein that is required for yolk sac erythropoiesis. The LMO2 protein has a central and crucial role in hematopoietic development and is highly conserved. The LMO2 transcription start site is located approximately 25 kb downstream from the 11p13 T-cell translocation cluster (11p13 ttc), where a number T-cell acute lymphoblastic leukemia-specific translocations occur. Alternative splicing results in multiple transcript variants encoding different isoforms. [provided by RefSeq, Nov 2008]

**Synonyms:**

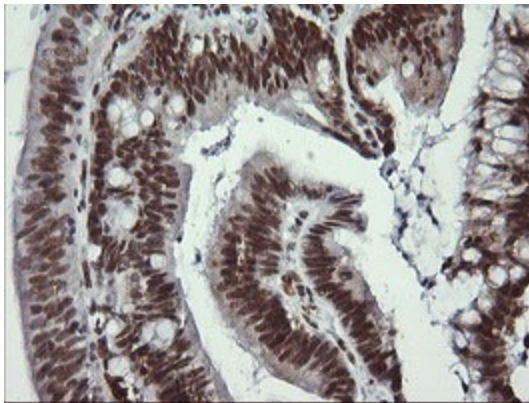
RBTN2; RBTN1; RHOM2; TTG2

**Protein Families:**

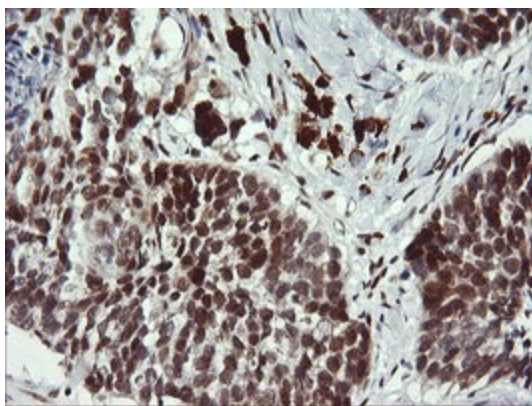
Druggable Genome

**Product images:**

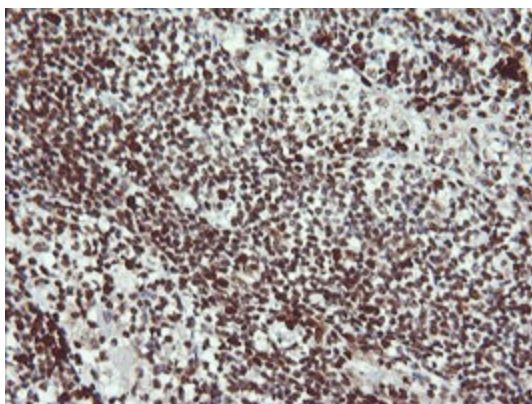
HEK293T cells were transfected with the pCMV6-ENTRY control (Left lane) or pCMV6-ENTRY LMO2 ([RC205376], Right lane) cDNA for 48 hrs and lysed. Equivalent amounts of cell lysates (5 ug per lane) were separated by SDS-PAGE and immunoblotted with anti-LMO2. Positive lysates [LY432149] (100ug) and [LC432149] (20ug) can be purchased separately from OriGene.



Immunohistochemical staining of paraffin-embedded Adenocarcinoma of Human colon tissue using anti-LMO2 mouse monoclonal antibody. (Heat-induced epitope retrieval by 10mM citric buffer, pH6.0, 120°C for 3min, [TA506139])



Immunohistochemical staining of paraffin-embedded Carcinoma of Human lung tissue using anti-LMO2 mouse monoclonal antibody. (Heat-induced epitope retrieval by 10mM citric buffer, pH6.0, 120°C for 3min, [TA506139])



Immunohistochemical staining of paraffin-embedded Human lymphoma tissue using anti-LMO2 mouse monoclonal antibody. (Heat-induced epitope retrieval by 10mM citric buffer, pH6.0, 120°C for 3min, [TA506139])