

Product datasheet for **TA506126S**

ACAA2 Mouse Monoclonal Antibody [Clone ID: OTI1C10]

Product data:

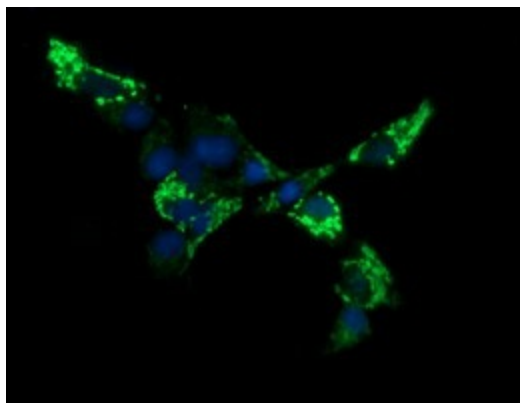
Product Type:	Primary Antibodies
Clone Name:	OTI1C10
Applications:	IF, IHC, WB
Recommended Dilution:	WB 1:200~4000, IHC 1:150, IF 1:100
Reactivity:	Human, Dog, Rat, Monkey, Mouse
Host:	Mouse
Isotype:	IgG2b
Clonality:	Monoclonal
Immunogen:	Full length human recombinant protein of human ACAA2(NP_006102) produced in HEK293T cell.
Formulation:	PBS (pH 7.3) containing 1% BSA, 50% glycerol and 0.02% sodium azide.
Concentration:	1 mg/ml
Purification:	Purified from mouse ascites fluids or tissue culture supernatant by affinity chromatography (protein A/G)
Conjugation:	Unconjugated
Storage:	Store at -20°C as received.
Stability:	Stable for 12 months from date of receipt.
Predicted Protein Size:	41.7 kDa
Gene Name:	acetyl-CoA acyltransferase 2
Database Link:	NP_006102 Entrez Gene 52538 Mouse Entrez Gene 170465 Rat Entrez Gene 490568 Dog Entrez Gene 709350 Monkey Entrez Gene 10449 Human P42765
Background:	The encoded protein catalyzes the last step of the mitochondrial fatty acid beta-oxidation spiral. Unlike most mitochondrial matrix proteins, it contains a non-cleavable amino-terminal targeting signal. [provided by RefSeq, Jul 2008]
Synonyms:	DSAEC



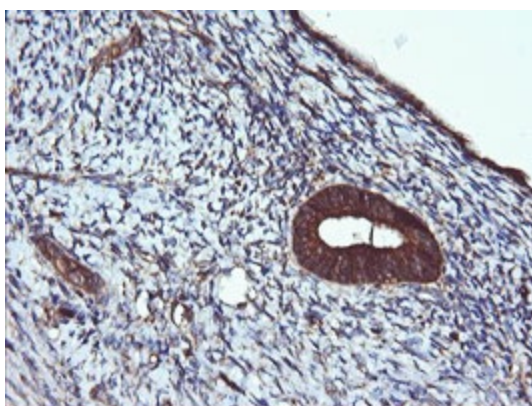
[View online »](#)

Protein Pathways: Fatty acid elongation in mitochondria, Fatty acid metabolism, Metabolic pathways, Valine, leucine and isoleucine degradation

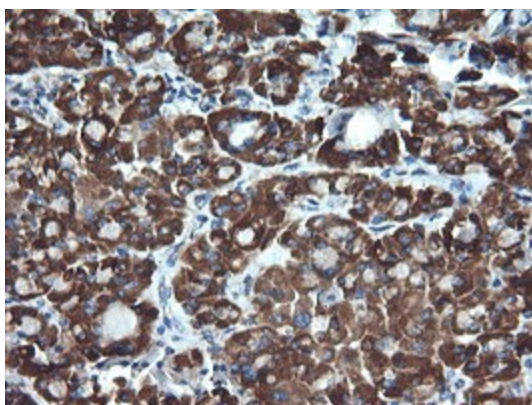
Product images:



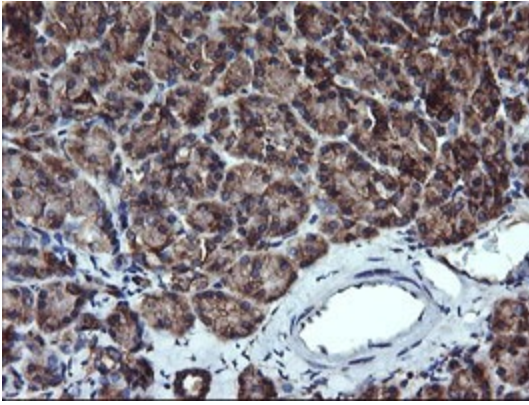
Anti-ACAA2 mouse monoclonal antibody ([TA506126]) immunofluorescent staining of COS7 cells transiently transfected by pCMV6-ENTRY ACAA2 ([RC201096]).



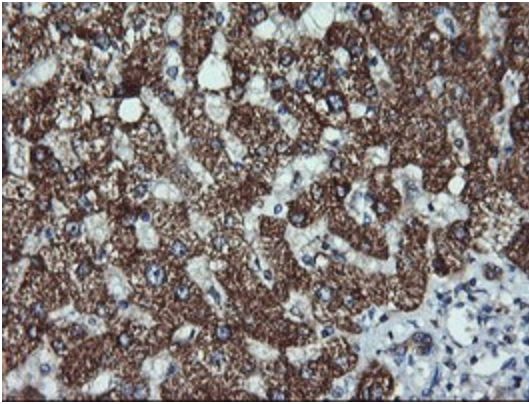
Immunohistochemical staining of paraffin-embedded Human endometrium tissue within the normal limits using anti-ACAA2 mouse monoclonal antibody. (Heat-induced epitope retrieval by 10mM citric buffer, pH6.0, 120°C for 3min, [TA506126])



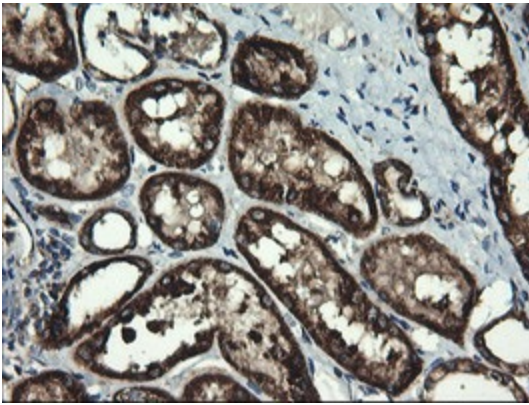
Immunohistochemical staining of paraffin-embedded Carcinoma of Human thyroid tissue using anti-ACAA2 mouse monoclonal antibody. (Heat-induced epitope retrieval by 10mM citric buffer, pH6.0, 120°C for 3min, [TA506126])



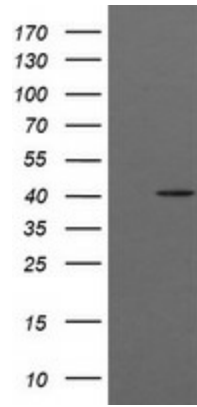
Immunohistochemical staining of paraffin-embedded Human pancreas tissue within the normal limits using anti-ACAA2 mouse monoclonal antibody. (Heat-induced epitope retrieval by 10mM citric buffer, pH6.0, 120°C for 3min, [TA506126])



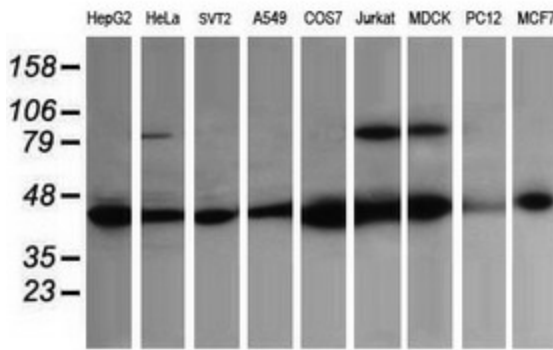
Immunohistochemical staining of paraffin-embedded Human liver tissue within the normal limits using anti-ACAA2 mouse monoclonal antibody. (Heat-induced epitope retrieval by 10mM citric buffer, pH6.0, 120°C for 3min, [TA506126])



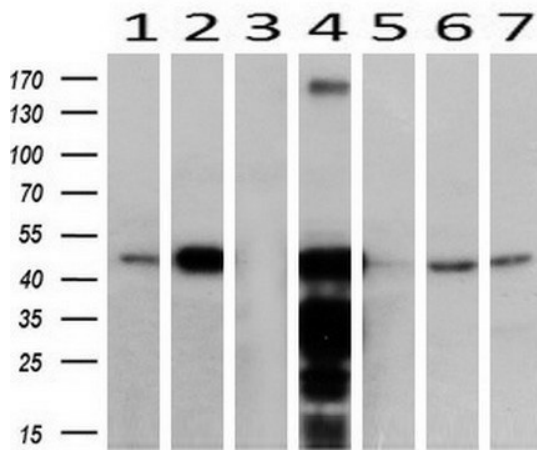
Immunohistochemical staining of paraffin-embedded Human Kidney tissue within the normal limits using anti-ACAA2 mouse monoclonal antibody. (Heat-induced epitope retrieval by 10mM citric buffer, pH6.0, 120°C for 3min, [TA506126])



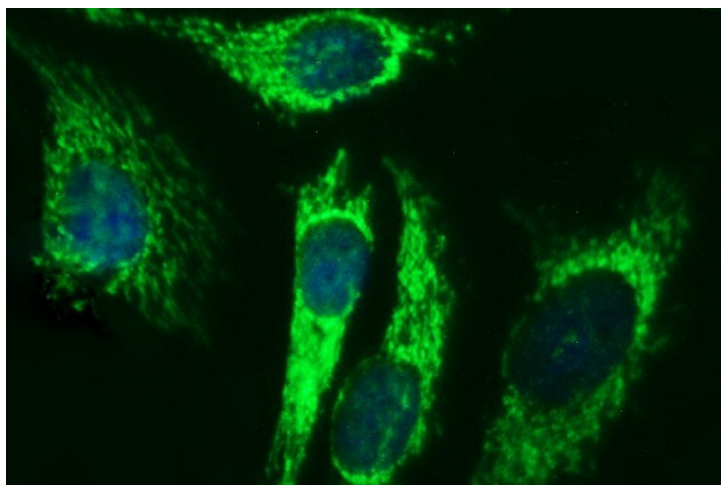
HEK293T cells were transfected with the pCMV6-ENTRY control (Cat# [PS100001], Left lane) or pCMV6-ENTRY ACAA2 (Cat# [RC201096], Right lane) cDNA for 48 hrs and lysed. Equivalent amounts of cell lysates (5 ug per lane) were separated by SDS-PAGE and immunoblotted with anti-ACAA2 (Cat# [TA506126]). Positive lysates [LY401843] (100ug) and [LC401843] (20ug) can be purchased separately from OriGene.



Western blot analysis of extracts (35ug) from 9 different cell lines by using anti-ACAA2 monoclonal antibody (HepG2: human; HeLa: human; SVT2: mouse; A549: human; COS7: monkey; Jurkat: human; MDCK: canine; PC12: rat; MCF7: human).



Western blot analysis of extracts (10ug) from 7 Human tissue by using anti-ACAA2 monoclonal antibody (1: Uterus; 2: Breast; 3: Brain; 4: Liver; 5: Ovary; 6: Thyroid gland; 7: colon) at 1:200 dilution.



Immunofluorescent staining of HeLa cells using anti-ACAA2 mouse monoclonal antibody ([TA506126]).