

## Product datasheet for **TA506115BM**

### DRP1 (DNM1L) Mouse Monoclonal Antibody (HRP conjugated) [Clone ID: OTI2E7]

#### Product data:

Product Type:	Primary Antibodies
Clone Name:	OTI2E7
Applications:	IHC, WB
Recommended Dilution:	WB 1:200~4000, IHC 1:150
Reactivity:	Human, Rat, Monkey, Mouse
Host:	Mouse
Isotype:	IgG2b
Clonality:	Monoclonal
Immunogen:	Full length human recombinant protein of human DNM1L(NP_036192) produced in HEK293T cell.
Formulation:	PBS (pH 7.4) containing 1% BSA, 50% glycerol.
Concentration:	0.5 mg/ml
Purification:	Purified from mouse ascites fluids or tissue culture supernatant by affinity chromatography (protein A/G)
Conjugation:	HRP
Storage:	Store at -20°C as received.
Stability:	Stable for 12 months from date of receipt.
Predicted Protein Size:	81.7 kDa
Gene Name:	dynamin 1 like
Database Link:	<a href="#">NP_036192</a> <a href="#">Entrez Gene 74006 Mouse</a> <a href="#">Entrez Gene 114114 Rat</a> <a href="#">Entrez Gene 695388 Monkey</a> <a href="#">Entrez Gene 10059 Human</a> <a href="#">O00429</a>



[View online »](#)

**Background:**

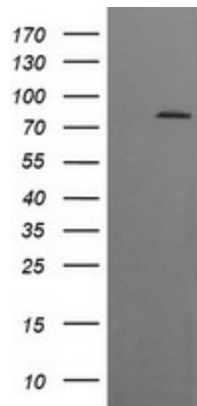
The protein encoded by this gene is a member of the dynamin superfamily of GTPases. Members of the dynamin-related subfamily, including the *S. cerevisiae* proteins Dnm1 and Vps1, contain the N-terminal tripartite GTPase domain but do not have the pleckstrin homology or proline-rich domains. This protein establishes mitochondrial morphology through a role in distributing mitochondrial tubules throughout the cytoplasm. The gene has 3 alternatively spliced transcripts encoding different isoforms. These transcripts are alternatively polyadenylated. [provided by RefSeq, Jul 2008]

**Synonyms:**

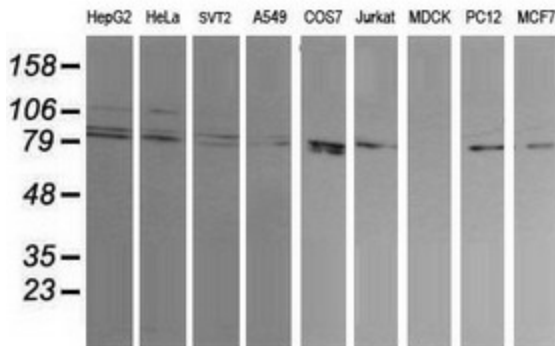
DLP1; DRP1; DVLP; DYMPLE; EMPF; EMPF1; HDYNIV

**Protein Pathways:**

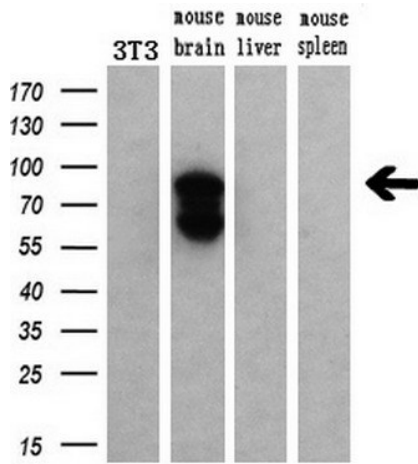
Endocytosis, Fc gamma R-mediated phagocytosis

**Product images:**


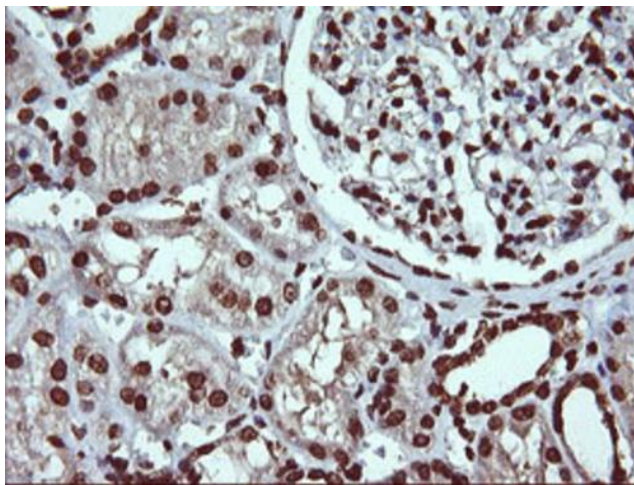
HEK293T cells were transfected with the pCMV6-ENTRY control (Left lane) or pCMV6-ENTRY DNM1L ([RC221708], Right lane) cDNA for 48 hrs and lysed. Equivalent amounts of cell lysates (5 ug per lane) were separated by SDS-PAGE and immunoblotted with anti-DNM1L. Positive lysates [LY402138] (100ug) and [LC402138] (20ug) can be purchased separately from OriGene.



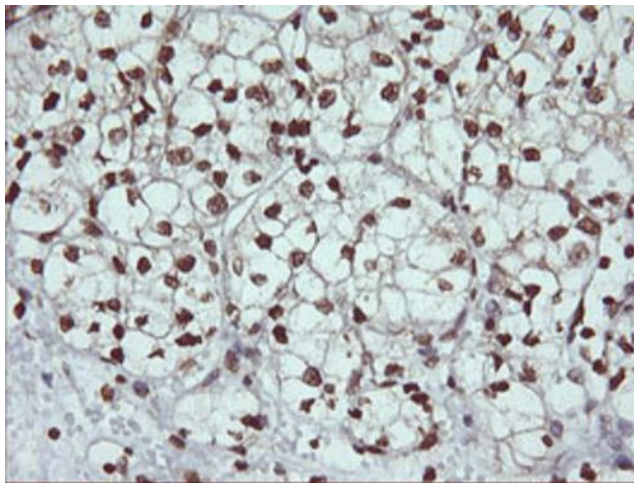
Western blot analysis of extracts (35ug) from 9 different cell lines by using anti-DNM1L monoclonal antibody (HepG2: human; HeLa: human; SVT2: mouse; A549: human; COS7: monkey; Jurkat: human; MDCK: canine; PC12: rat; MCF7: human).



Western blot analysis of extracts (10ug) from a mouse cell line and 3 different mouse tissues by using anti-DNM1L monoclonal antibody (1:200).

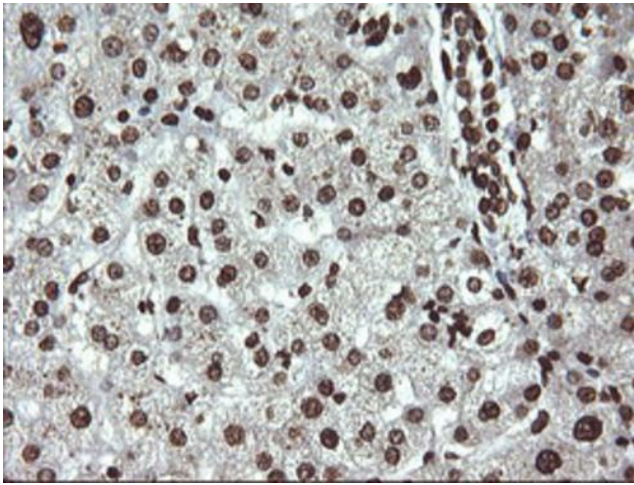


Immunohistochemical staining of paraffin-embedded Human Kidney tissue within the normal limits using anti-DNM1L mouse monoclonal antibody. (Heat-induced epitope retrieval by 10mM citric buffer, pH6.0, 120°C for 3min, [TA506115])

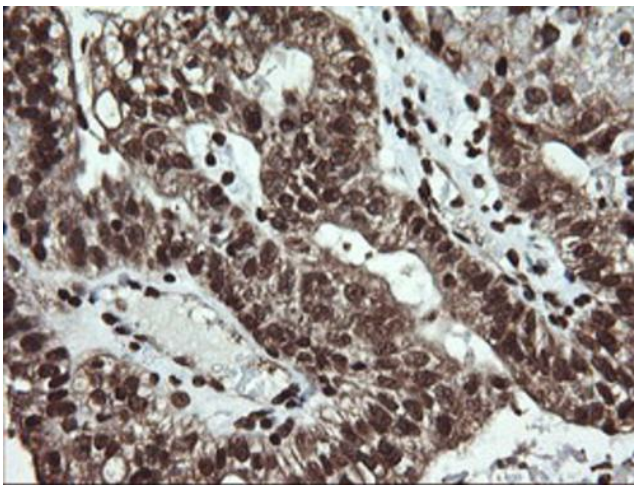


Immunohistochemical staining of paraffin-embedded Carcinoma of Human kidney tissue using anti-DNM1L mouse monoclonal antibody. (Heat-induced epitope retrieval by 10mM citric buffer, pH6.0, 120°C for 3min, [TA506115])

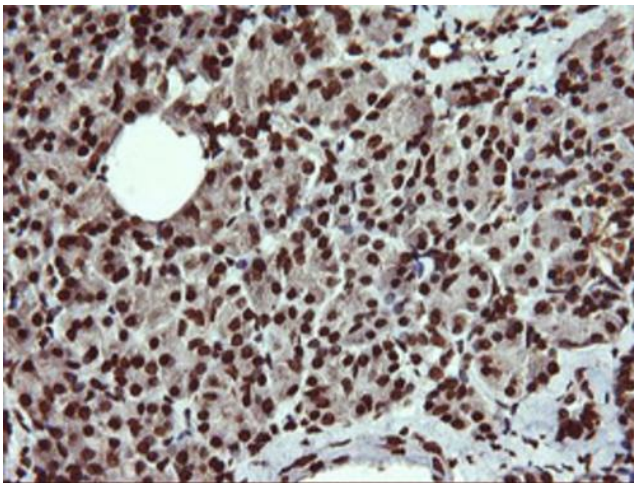




Immunohistochemical staining of paraffin-embedded Human liver tissue within the normal limits using anti-DNM1L mouse monoclonal antibody. (Heat-induced epitope retrieval by 10mM citric buffer, pH6.0, 120°C for 3min, [TA506115])



Immunohistochemical staining of paraffin-embedded Adenocarcinoma of Human ovary tissue using anti-DNM1L mouse monoclonal antibody. (Heat-induced epitope retrieval by 10mM citric buffer, pH6.0, 120°C for 3min, [TA506115])



Immunohistochemical staining of paraffin-embedded Human pancreas tissue within the normal limits using anti-DNM1L mouse monoclonal antibody. (Heat-induced epitope retrieval by 10mM citric buffer, pH6.0, 120°C for 3min, [TA506115])