

Product datasheet for **TA506099AM**

Chromogranin A (CHGA) Mouse Monoclonal Antibody (Biotin conjugated) [Clone ID: OTI1H9]

Product data:

| | |
|-------------------------|---|
| Product Type: | Primary Antibodies |
| Clone Name: | OTI1H9 |
| Applications: | IF, IHC, WB |
| Recommended Dilution: | WB 1:2000, IHC 1:150, IF 1:100 |
| Reactivity: | Human |
| Host: | Mouse |
| Isotype: | IgG1 |
| Clonality: | Monoclonal |
| Immunogen: | Full length human recombinant protein of human CHGA(NP_001266) produced in HEK293T cell. |
| Formulation: | PBS (pH 7.3) containing 1% BSA, 50% glycerol and 0.02% sodium azide. |
| Concentration: | 0.5 mg/ml |
| Purification: | Purified from mouse ascites fluids or tissue culture supernatant by affinity chromatography (protein A/G) |
| Conjugation: | Biotin |
| Storage: | Store at -20°C as received. |
| Stability: | Stable for 12 months from date of receipt. |
| Predicted Protein Size: | 48.9 kDa |
| Gene Name: | chromogranin A |
| Database Link: | NP_001266 Entrez Gene 1113 Human P10645 |



[View online »](#)

Background:

The protein encoded by this gene is a member of the chromogranin/secretogranin family of neuroendocrine secretory proteins. It is found in secretory vesicles of neurons and endocrine cells. This gene product is a precursor to three biologically active peptides; vasostatin, pancreastatin, and parastatin. These peptides act as autocrine or paracrine negative modulators of the neuroendocrine system. Other peptides, including chromostatin, beta-granin, WE-14 and GE-25, are also derived from the full-length protein. However, biological activities for these molecules have not been shown. [provided by RefSeq, Jul 2008]

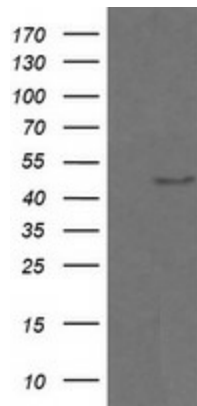
Synonyms:

CGA

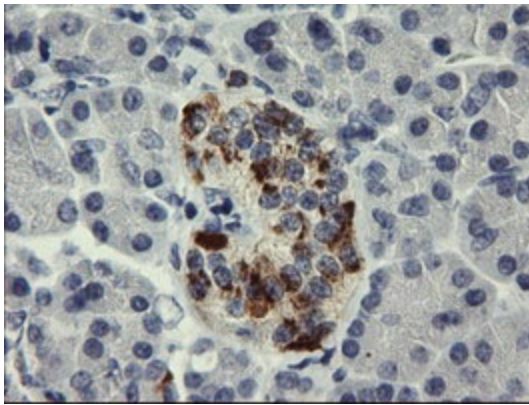
Protein Families:

Druggable Genome, Secreted Protein

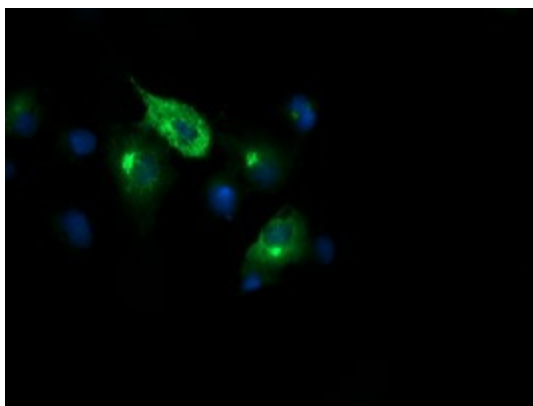
Product images:



HEK293T cells were transfected with the pCMV6-ENTRY control (Left lane) or pCMV6-ENTRY CHGA [RC200492], Right lane) cDNA for 48 hrs and lysed. Equivalent amounts of cell lysates (5 ug per lane) were separated by SDS-PAGE and immunoblotted with anti-CHGA. Positive lysates [LY400511] (100ug) and [LC400511] (20ug) can be purchased separately from OriGene.



Immunohistochemical staining of paraffin-embedded Human pancreas tissue within the normal limits using anti-CHGA mouse monoclonal antibody. (Heat-induced epitope retrieval by 10mM citric buffer, pH6.0, 120°C for 3min, [TA506099])



Anti-CHGA mouse monoclonal antibody ([TA506099]) immunofluorescent staining of COS7 cells transiently transfected by pCMV6-ENTRY CHGA ([RC200492]).