

## Product datasheet for **TA506098BM**

### Chromogranin A (CHGA) Mouse Monoclonal Antibody (HRP conjugated) [Clone ID: OTI2E12]

#### Product data:

Product Type:	Primary Antibodies
Clone Name:	OTI2E12
Applications:	IF, IHC, WB
Recommended Dilution:	WB 1:200~4000, IHC 1:150, IF 1:100
Reactivity:	Human, Mouse
Host:	Mouse
Isotype:	IgG1
Clonality:	Monoclonal
Immunogen:	Full length human recombinant protein of human CHGA(NP_001266) produced in HEK293T cell.
Formulation:	PBS (pH 7.3) containing 1% BSA, 50% glycerol.
Concentration:	0.5 mg/ml
Purification:	Purified from mouse ascites fluids or tissue culture supernatant by affinity chromatography (protein A/G)
Conjugation:	HRP
Storage:	Store at -20°C as received.
Stability:	Stable for 12 months from date of receipt.
Predicted Protein Size:	48.9 kDa
Gene Name:	chromogranin A
Database Link:	<a href="#">NP_001266</a> <a href="#">Entrez Gene 12652 Mouse</a> <a href="#">Entrez Gene 1113 Human</a> <a href="#">P10645</a>



[View online »](#)

**Background:**

The protein encoded by this gene is a member of the chromogranin/secretogranin family of neuroendocrine secretory proteins. It is found in secretory vesicles of neurons and endocrine cells. This gene product is a precursor to three biologically active peptides; vasostatin, pancreastatin, and parastatin. These peptides act as autocrine or paracrine negative modulators of the neuroendocrine system. Other peptides, including chromostatin, beta-granin, WE-14 and GE-25, are also derived from the full-length protein. However, biological activities for these molecules have not been shown. [provided by RefSeq, Jul 2008]

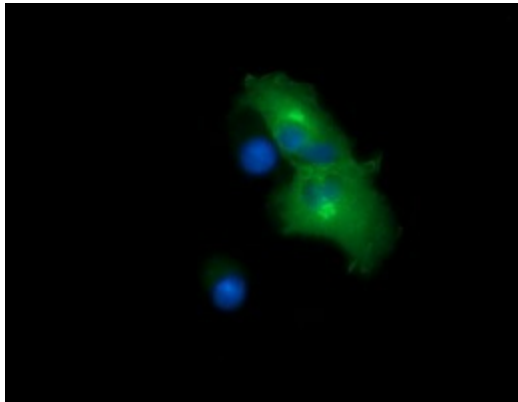
**Synonyms:**

CGA

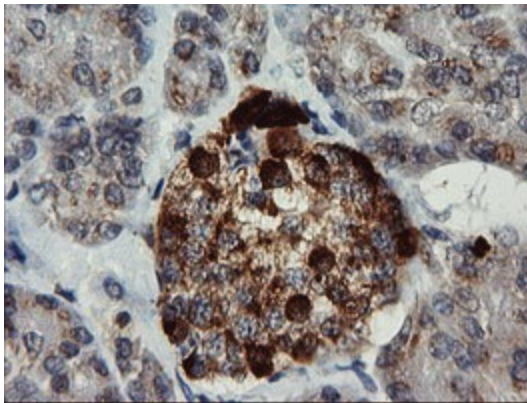
**Protein Families:**

Druggable Genome, Secreted Protein

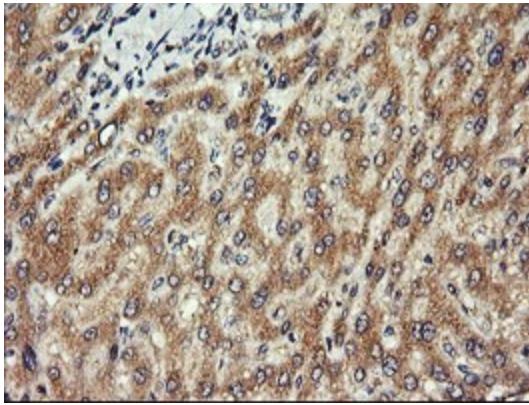
**Product images:**



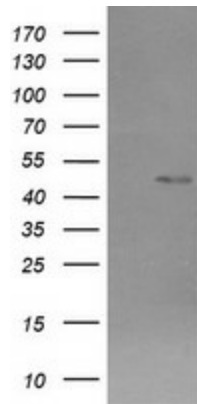
Anti-CHGA mouse monoclonal antibody ([TA506098]) immunofluorescent staining of COS7 cells transiently transfected by pCMV6-ENTRY CHGA ([RC200492]).



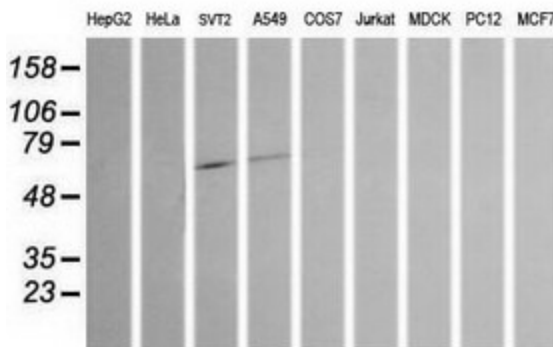
Immunohistochemical staining of paraffin-embedded Human pancreas tissue within the normal limits using anti-CHGA mouse monoclonal antibody. (Heat-induced epitope retrieval by 10mM citric buffer, pH6.0, 120°C for 3min, [TA506098])



Immunohistochemical staining of paraffin-embedded Human liver tissue within the normal limits using anti-CHGA mouse monoclonal antibody. (Heat-induced epitope retrieval by 10mM citric buffer, pH6.0, 120°C for 3min, [TA506098])



HEK293T cells were transfected with the pCMV6-ENTRY control (Cat# [PS100001], Left lane) or pCMV6-ENTRY CHGA (Cat# [RC200492], Right lane) cDNA for 48 hrs and lysed. Equivalent amounts of cell lysates (5 ug per lane) were separated by SDS-PAGE and immunoblotted with anti-CHGA (Cat# [TA506098]). Positive lysates [LY400511] (100ug) and [LC400511] (20ug) can be purchased separately from OriGene.



Western blot analysis of extracts (35ug) from 9 different cell lines by using anti-CHGA monoclonal antibody (HepG2: human; HeLa: human; SVT2: mouse; A549: human; COS7: monkey; Jurkat: human; MDCK: canine; PC12: rat; MCF7: human).