

## Product datasheet for **TA506084**

### **RARRES1 Mouse Monoclonal Antibody [Clone ID: OTI1B1]**

#### **Product data:**

<b>Product Type:</b>	Primary Antibodies
<b>Clone Name:</b>	OTI1B1
<b>Applications:</b>	IHC, WB
<b>Recommended Dilution:</b>	WB 1:4000, IHC 1:150
<b>Reactivity:</b>	Human
<b>Host:</b>	Mouse
<b>Isotype:</b>	IgG2b
<b>Clonality:</b>	Monoclonal
<b>Immunogen:</b>	Full length human recombinant protein of human RARRES1(NP_996846) produced in HEK293T cell.
<b>Formulation:</b>	PBS (pH 7.3) containing 1% BSA, 50% glycerol and 0.02% sodium azide.
<b>Concentration:</b>	1 mg/ml
<b>Purification:</b>	Purified from mouse ascites fluids or tissue culture supernatant by affinity chromatography (protein A/G)
<b>Conjugation:</b>	Unconjugated
<b>Storage:</b>	Store at -20°C as received.
<b>Stability:</b>	Stable for 12 months from date of receipt.
<b>Predicted Protein Size:</b>	33.1 kDa
<b>Gene Name:</b>	retinoic acid receptor responder 1
<b>Database Link:</b>	<a href="#">NP_996846</a> <a href="#">Entrez Gene 5918 Human</a> <a href="#">P49788</a>
<b>Background:</b>	This gene was identified as a retinoid acid (RA) receptor-responsive gene. It encodes a type 1 membrane protein. The expression of this gene is upregulated by tazarotene as well as by retinoic acid receptors. The expression of this gene is found to be downregulated in prostate cancer, which is caused by the methylation of its promoter and CpG island. Alternatively spliced transcript variant encoding distinct isoforms have been observed. [provided by RefSeq, Jul 2008]

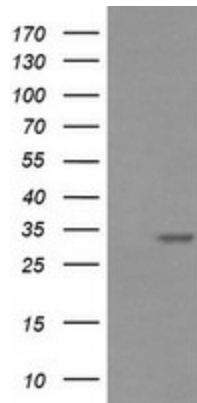


[View online »](#)

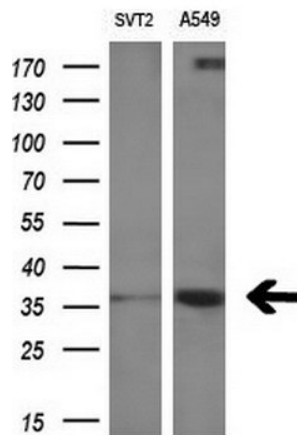
**Synonyms:** LXNL; PERG-1; TIG1

**Protein Families:** Druggable Genome

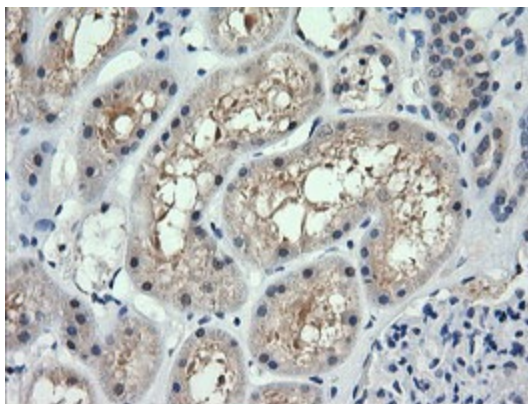
**Product images:**



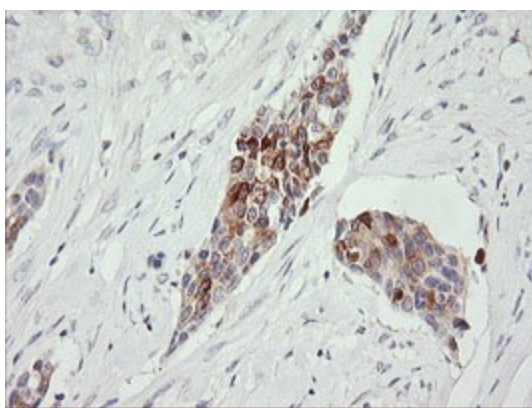
HEK293T cells were transfected with the pCMV6-ENTRY control (Left lane) or pCMV6-ENTRY RARRES1 ([RC205143], Right lane) cDNA for 48 hrs and lysed. Equivalent amounts of cell lysates (5 ug per lane) were separated by SDS-PAGE and immunoblotted with anti-RARRES1. Positive lysates [LY404197] (100ug) and [LC404197] (20ug) can be purchased separately from OriGene.



Western blot analysis of extracts (10ug) from 2 different cell lines by using anti-RARRES1 monoclonal antibody (1:200).



Immunohistochemical staining of paraffin-embedded Human Kidney tissue within the normal limits using anti-RARRES1 mouse monoclonal antibody. (Heat-induced epitope retrieval by 10mM citric buffer, pH6.0, 120°C for 3min, TA506084)



Immunohistochemical staining of paraffin-embedded Carcinoma of Human bladder tissue using anti-RARRES1 mouse monoclonal antibody. (Heat-induced epitope retrieval by 10mM citric buffer, pH6.0, 120°C for 3min, TA506084)