

Product datasheet for **TA506064AM**

CD3E Mouse Monoclonal Antibody (Biotin conjugated) [Clone ID: OTI3E10]

Product data:

Product Type:	Primary Antibodies
Clone Name:	OTI3E10
Applications:	IF, IHC, WB
Recommended Dilution:	WB 1:200~4000, IHC 1:150, IF 1:100
Reactivity:	Human
Host:	Mouse
Isotype:	IgG2b
Clonality:	Monoclonal
Immunogen:	Full length human recombinant protein of human CD3E(NP_000724) produced in HEK293T cell.
Concentration:	0.5 mg/ml
Purification:	Purified from mouse ascites fluids or tissue culture supernatant by affinity chromatography (protein A/G)
Conjugation:	Biotin
Storage:	Store at -20°C as received.
Stability:	Stable for 12 months from date of receipt.
Predicted Protein Size:	20.7 kDa
Gene Name:	CD3e molecule
Database Link:	NP_000724 Entrez Gene 916 Human P07766



[View online »](#)

Background:

The protein encoded by this gene is the CD3-epsilon polypeptide, which together with CD3-gamma, -delta and -zeta, and the T-cell receptor alpha/beta and gamma/delta heterodimers, forms the T-cell receptor-CD3 complex. This complex plays an important role in coupling antigen recognition to several intracellular signal-transduction pathways. The genes encoding the epsilon, gamma and delta polypeptides are located in the same cluster on chromosome 11. The epsilon polypeptide plays an essential role in T-cell development. Defects in this gene cause immunodeficiency. This gene has also been linked to a susceptibility to type I diabetes in women. [provided by RefSeq, Jul 2008]

Synonyms:

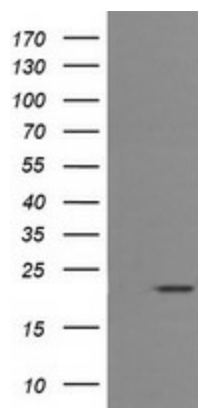
IMD18; T3E; TCRE

Protein Families:

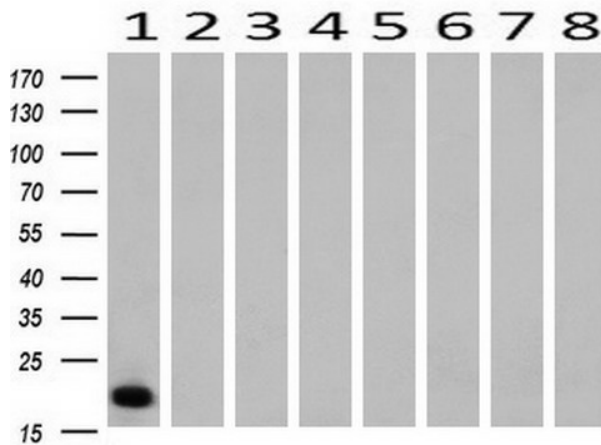
Druggable Genome, Transmembrane

Protein Pathways:

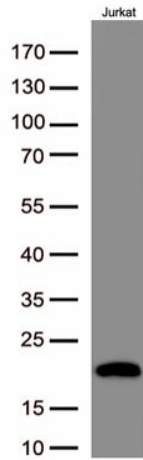
Hematopoietic cell lineage, Primary immunodeficiency, T cell receptor signaling pathway

Product images:


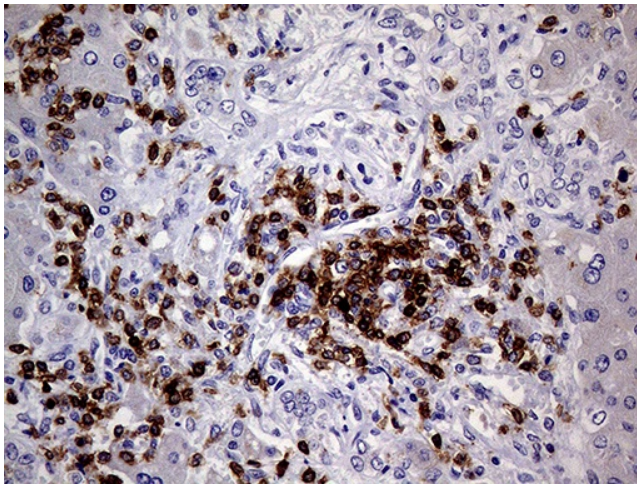
HEK293T cells were transfected with the pCMV6-ENTRY control (Cat# [PS100001], Left lane) or pCMV6-ENTRY CD3E (Cat# [RC208276], Right lane) cDNA for 48 hrs and lysed. Equivalent amounts of cell lysates (5 ug per lane) were separated by SDS-PAGE and immunoblotted with anti-CD3E (Cat# [TA506064]). Positive lysates [LY400242] (100ug) and [LC400242] (20ug) can be purchased separately from OriGene.



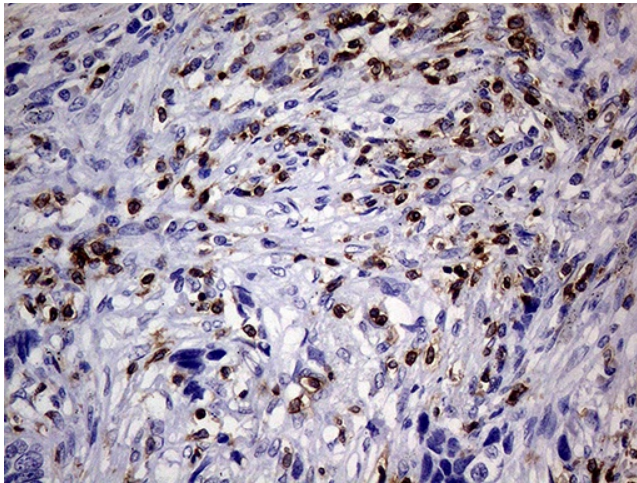
Western blot analysis of extracts (10ug) from 8 Human tissue by using anti-CD3E monoclonal antibody at 1:200 (1: Testis; 2: Uterus; 3: Breast; 4: Brain; 5: Liver; 6: Ovary; 7: Thyroid gland; 8: Colon).



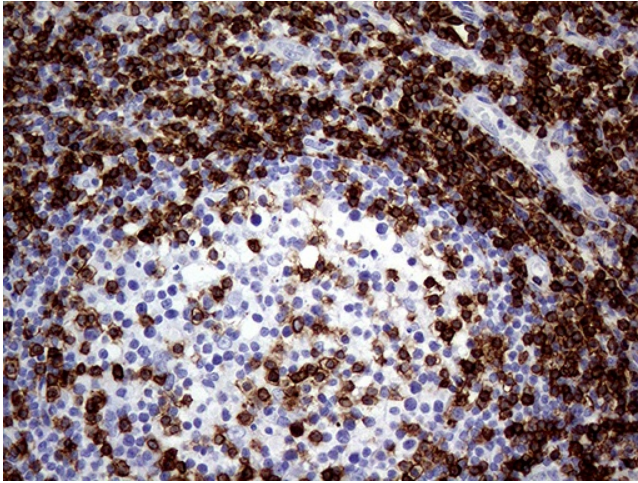
Western blot analysis of extracts(50ug) from Jurkat cell lines lysates by using anti-CD3E monoclonal antibody. ([TA506064], 1:500)



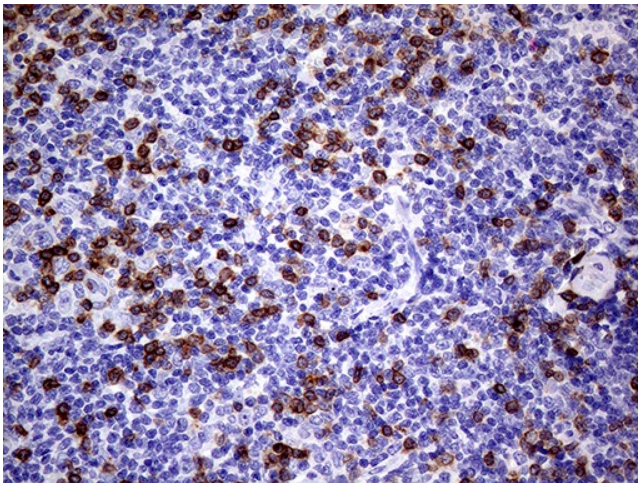
Immunohistochemical staining of paraffin-embedded Carcinoma of Human liver tissue using anti-CD3E mouse monoclonal antibody. (Heat-induced epitope retrieval by 1mM EDTA in 10mM Tris buffer (pH8.0) at 120°C for 3min, [TA506064]) (1:2000) (1:4000)



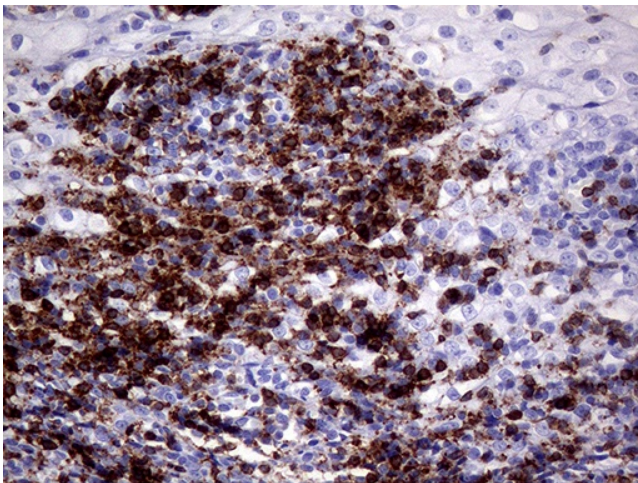
Immunohistochemical staining of paraffin-embedded Carcinoma of Human lung tissue using anti-CD3E mouse monoclonal antibody. (Heat-induced epitope retrieval by 1mM EDTA in 10mM Tris buffer (pH8.0) at 120°C for 3min, [TA506064]) (1:2000) (1:4000)



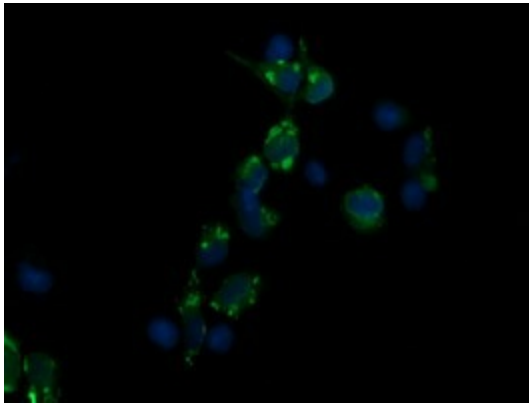
Immunohistochemical staining of paraffin-embedded Human lymph node tissue within the normal limits using anti-CD3E mouse monoclonal antibody. (Heat-induced epitope retrieval by 1mM EDTA in 10mM Tris buffer (pH8.0) at 120°C for 3min, [TA506064]) (1:2000) (1:4000)



Immunohistochemical staining of paraffin-embedded Human lymphoma tissue using anti-CD3E mouse monoclonal antibody. (Heat-induced epitope retrieval by 1mM EDTA in 10mM Tris buffer (pH8.0) at 120°C for 3min, [TA506064]) (1:2000) (1:4000)



Immunohistochemical staining of paraffin-embedded Human tonsil within the normal limits using anti-CD3E mouse monoclonal antibody. (Heat-induced epitope retrieval by 10mM citric buffer, pH6.0, 120°C for 3min, [TA506064])



Anti-CD3E mouse monoclonal antibody ([TA506064]) immunofluorescent staining of COS7 cells transiently transfected by pCMV6-ENTRY CD3E ([RC208276]).