

Product datasheet for **TA506025M**

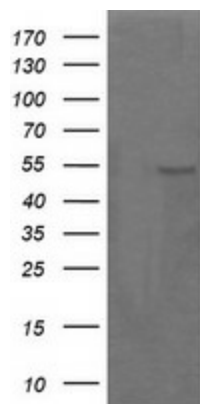
Parvin alpha (PARVA) Mouse Monoclonal Antibody [Clone ID: OTI2G10]

Product data:

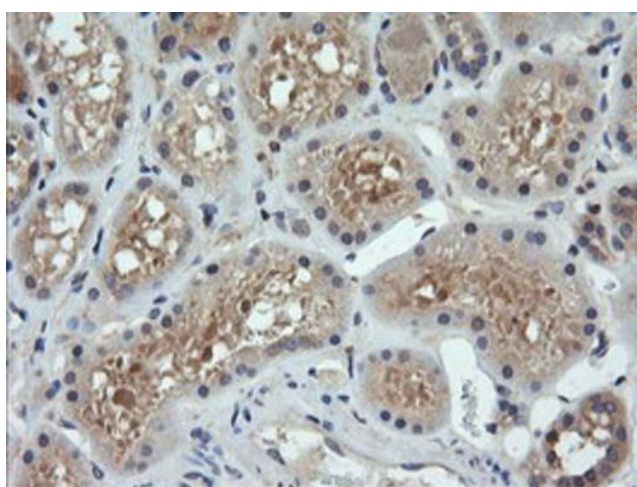
Product Type:	Primary Antibodies
Clone Name:	OTI2G10
Applications:	IF, IHC, WB
Recommended Dilution:	WB 1:2000, IHC 1:150, IF 1:100
Reactivity:	Human, Mouse, Rat
Host:	Mouse
Isotype:	IgG1
Clonality:	Monoclonal
Immunogen:	Full length human recombinant protein of human PARVA(NP_060692) produced in HEK293T cell.
Formulation:	PBS (pH 7.3) containing 1% BSA, 50% glycerol and 0.02% sodium azide.
Concentration:	1 mg/ml
Purification:	Purified from mouse ascites fluids or tissue culture supernatant by affinity chromatography (protein A/G)
Conjugation:	Unconjugated
Storage:	Store at -20°C as received.
Stability:	Stable for 12 months from date of receipt.
Gene Name:	parvin alpha
Database Link:	NP_060692 Entrez Gene 57341 Rat Entrez Gene 57342 Mouse Entrez Gene 55742 Human Q9NVD7
Background:	This gene encodes a member of the parvin family of actin-binding proteins. Parvins are associated with focal contacts and contain calponin homology domains that bind to actin filaments. The encoded protein is part of the integrin-linked kinase signaling complex and plays a role in cell adhesion, motility and survival. [provided by RefSeq, Dec 2010]
Synonyms:	CH-ILKBP; MXRA2
Protein Pathways:	Focal adhesion


[View online »](#)

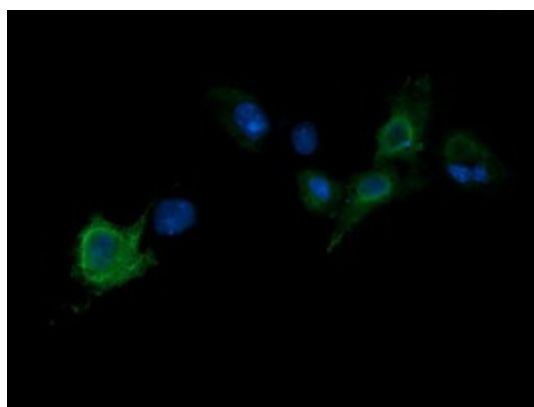
Product images:



HEK293T cells were transfected with the pCMV6-ENTRY control (Left lane) or pCMV6-ENTRY PARVA ([RC205086], Right lane) cDNA for 48 hrs and lysed. Equivalent amounts of cell lysates (5 ug per lane) were separated by SDS-PAGE and immunoblotted with anti-PARVA. Positive lysates [LY413202] (100ug) and [LC413202] (20ug) can be purchased separately from OriGene.



Immunohistochemical staining of paraffin-embedded Human Kidney tissue within the normal limits using anti-PARVA mouse monoclonal antibody. Heat-induced epitope retrieval by EDTA solution buffer pH 8.0 at 120°C for 3 min.



Anti-PARVA mouse monoclonal antibody ([TA506025]) immunofluorescent staining of COS7 cells transiently transfected by pCMV6-ENTRY PARVA ([RC205086]).