

Product datasheet for **TA506017S**

Junctional Adhesion Molecule 1 (F11R) Mouse Monoclonal Antibody [Clone ID: OTI3H3]

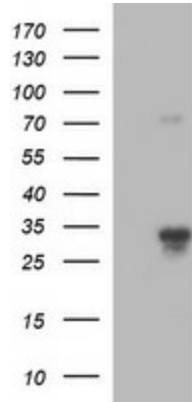
Product data:

Product Type:	Primary Antibodies
Clone Name:	OTI3H3
Applications:	IF, IHC, WB
Recommended Dilution:	WB 1:4000, IHC 1:150, IF 1:100
Reactivity:	Human
Host:	Mouse
Isotype:	IgG2b
Clonality:	Monoclonal
Immunogen:	Full length human recombinant protein of human F11R(NP_653087) produced in HEK293T cell.
Formulation:	PBS (pH 7.3) containing 1% BSA, 50% glycerol and 0.02% sodium azide.
Concentration:	1 mg/ml
Purification:	Purified from mouse ascites fluids or tissue culture supernatant by affinity chromatography (protein A/G)
Conjugation:	Unconjugated
Storage:	Store at -20°C as received.
Stability:	Stable for 12 months from date of receipt.
Predicted Protein Size:	29.8 kDa
Gene Name:	F11 receptor
Database Link:	NP_653087 Entrez Gene 50848 Human Q9Y624
Synonyms:	JAM, KAT, JAM1, JAMA, JCAM, CD321, JAM-1, JAM-A, PAM-1
Protein Families:	Druggable Genome, Transmembrane
Protein Pathways:	Cell adhesion molecules (CAMs), Epithelial cell signaling in Helicobacter pylori infection, Leukocyte transendothelial migration, Tight junction

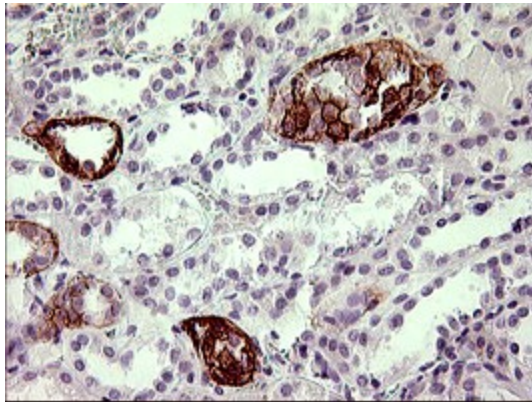


[View online »](#)

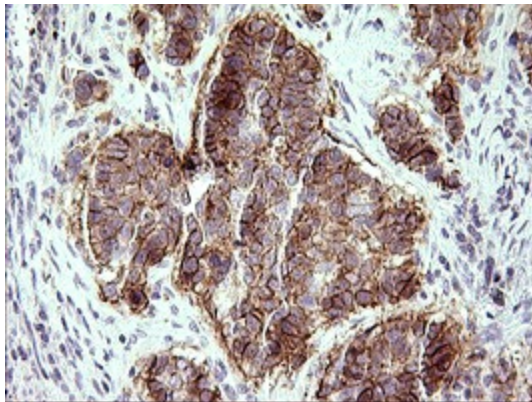
Product images:



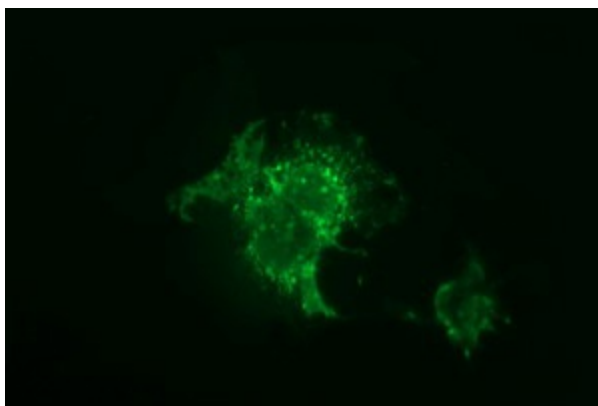
HEK293T cells were transfected with the pCMV6-ENTRY control (Cat# [PS100001], Left lane) or pCMV6-ENTRY F11R (Cat# [RC200004], Right lane) cDNA for 48 hrs and lysed. Equivalent amounts of cell lysates (5 ug per lane) were separated by SDS-PAGE and immunoblotted with anti-F11R antibody (Cat# [TA506017]). Positive lysates [LY403392] (100ug) and [LC403392] (20ug) can be purchased separately from OriGene.



Immunohistochemical staining of paraffin-embedded Human Kidney tissue within the normal limits using anti-F11R mouse monoclonal antibody. (Heat-induced epitope retrieval by 10mM citric buffer, pH6.0, 120°C for 3min, [TA506017])



Immunohistochemical staining of paraffin-embedded Carcinoma of Human lung tissue using anti-F11R mouse monoclonal antibody. (Heat-induced epitope retrieval by 10mM citric buffer, pH6.0, 120°C for 3min, [TA506017])



Anti-F11R mouse monoclonal antibody ([TA506017]) immunofluorescent staining of COS7 cells transiently transfected by pCMV6-ENTRY F11R ([RC200004]).