

## Product datasheet for **TA505995AM**

### IL36 gamma (IL36G) Mouse Monoclonal Antibody (Biotin conjugated) [Clone ID: OTI6E4]

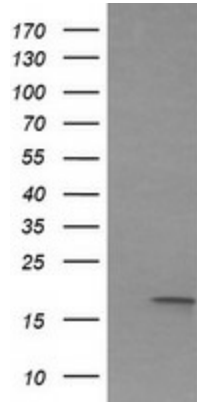
#### Product data:

|                         |   |
|-------------------------|---|
| Product Type:           | Primary Antibodies  |
| Clone Name:             | OTI6E4  |
| Applications:           | IHC, WB   |
| Recommended Dilution:   | WB 1:4000, IHC 1:150  |
| Reactivity:             | Human   |
| Host:                   | Mouse   |
| Isotype:                | IgG2b   |
| Clonality:              | Monoclonal  |
| Immunogen:              | Full length human recombinant protein of human IL1F9(NP_062564) produced in HEK293T cell.                 |
| Formulation:            | PBS (pH 7.3) containing 1% BSA, 50% glycerol and 0.02% sodium azide.                                      |
| Concentration:          | 0.5 mg/ml   |
| Purification:           | Purified from mouse ascites fluids or tissue culture supernatant by affinity chromatography (protein A/G) |
| Conjugation:            | Biotin  |
| Storage:                | Store at -20°C as received.   |
| Stability:              | Stable for 12 months from date of receipt.  |
| Predicted Protein Size: | 18.5 kDa  |
| Gene Name:              | interleukin 36 gamma  |
| Database Link:          | <a href="#">NP_062564</a><br><a href="#">Entrez Gene 56300 Human</a><br><a href="#">Q9NZH8</a>            |
| Synonyms:               | IL-1F9; IL-1H1; IL-1RP2; IL1E; IL1F9; IL1H1; IL1RP2   |
| Protein Families:       | Druggable Genome, Secreted Protein  |

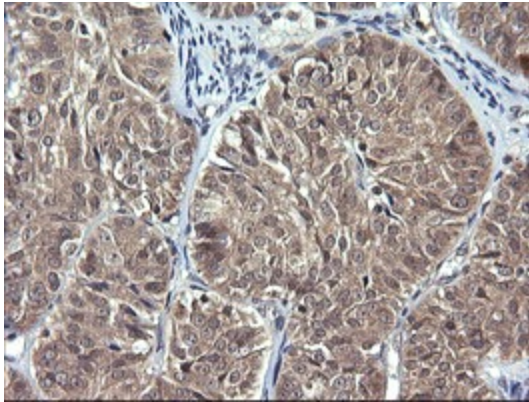


[View online »](#)

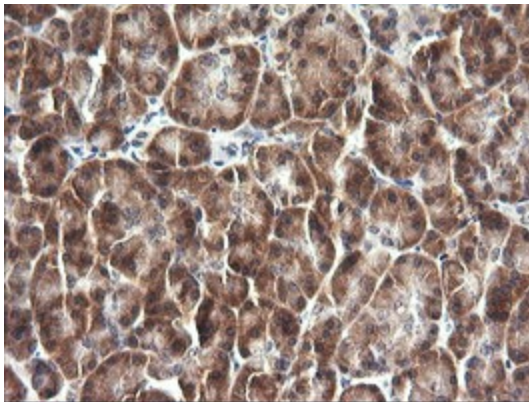
**Product images:**



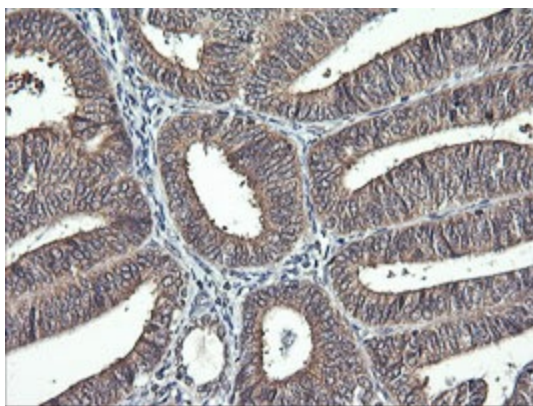
HEK293T cells were transfected with the pCMV6-ENTRY control (Left lane) or pCMV6-ENTRY IL1F9 ([RC224784], Right lane) cDNA for 48 hrs and lysed. Equivalent amounts of cell lysates (5 ug per lane) were separated by SDS-PAGE and immunoblotted with anti-IL1F9. Positive lysates [LY412705] (100ug) and [LC412705] (20ug) can be purchased separately from OriGene.



Immunohistochemical staining of paraffin-embedded Adenocarcinoma of Human ovary tissue using anti-IL1F9 mouse monoclonal antibody. (Heat-induced epitope retrieval by 10mM citric buffer, pH6.0, 120°C for 3min, [TA505995])



Immunohistochemical staining of paraffin-embedded Human pancreas tissue within the normal limits using anti-IL1F9 mouse monoclonal antibody. (Heat-induced epitope retrieval by 10mM citric buffer, pH6.0, 120°C for 3min, [TA505995])



Immunohistochemical staining of paraffin-embedded Adenocarcinoma of Human endometrium tissue using anti-IL1F9 mouse monoclonal antibody. (Heat-induced epitope retrieval by 10mM citric buffer, pH6.0, 120°C for 3min, [TA505995])