

Product datasheet for TA505991M

Parvin alpha (PARVA) Mouse Monoclonal Antibody [Clone ID: OT11H2]

Product data:

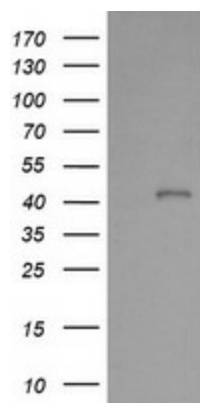
Product Type:	Primary Antibodies
Clone Name:	OT11H2
Applications:	IF, IHC, WB
Recommended Dilution:	WB 1:200~4000, IHC 1:150, IF 1:100
Reactivity:	Human, Dog, Rat, Monkey, Mouse
Host:	Mouse
Isotype:	IgG2a
Clonality:	Monoclonal
Immunogen:	Full length human recombinant protein of human PARVA(NP_060692) produced in HEK293T cell.
Formulation:	PBS (pH 7.3) containing 1% BSA, 50% glycerol and 0.02% sodium azide.
Concentration:	1 mg/ml
Purification:	Purified from mouse ascites fluids or tissue culture supernatant by affinity chromatography (protein A/G)
Conjugation:	Unconjugated
Storage:	Store at -20°C as received.
Stability:	Stable for 12 months from date of receipt.
Predicted Protein Size:	42.1 kDa
Gene Name:	parvin alpha
Database Link:	NP_060692 Entrez Gene 57341 Rat Entrez Gene 57342 Mouse Entrez Gene 476859 Dog Entrez Gene 703481 Monkey Entrez Gene 55742 Human Q9NVD7
Background:	This gene encodes a member of the parvin family of actin-binding proteins. Parvins are associated with focal contacts and contain calponin homology domains that bind to actin filaments. The encoded protein is part of the integrin-linked kinase signaling complex and plays a role in cell adhesion, motility and survival. [provided by RefSeq, Dec 2010]


[View online »](#)

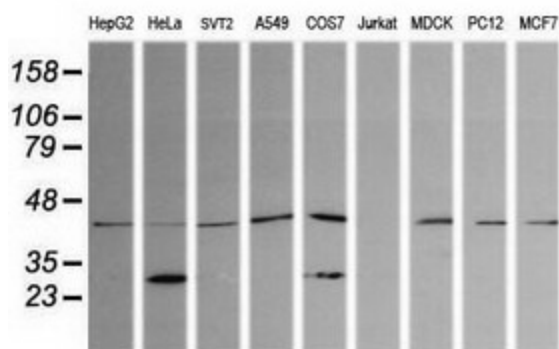
Synonyms: CH-ILKBP; MXRA2

Protein Pathways: Focal adhesion

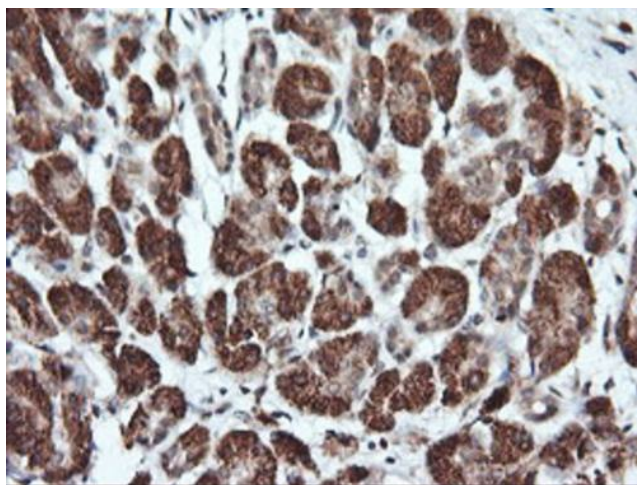
Product images:



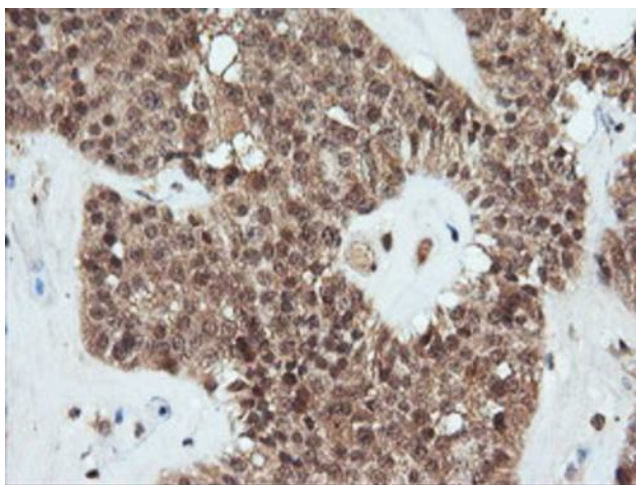
HEK293T cells were transfected with the pCMV6-ENTRY control (Cat# [PS100001], Left lane) or pCMV6-ENTRY PARVA (Cat# [RC205086], Right lane) cDNA for 48 hrs and lysed. Equivalent amounts of cell lysates (5 ug per lane) were separated by SDS-PAGE and immunoblotted with anti-PARVA (Cat# [TA505991]). Positive lysates [LY413202] (100ug) and [LC413202] (20ug) can be purchased separately from OriGene.



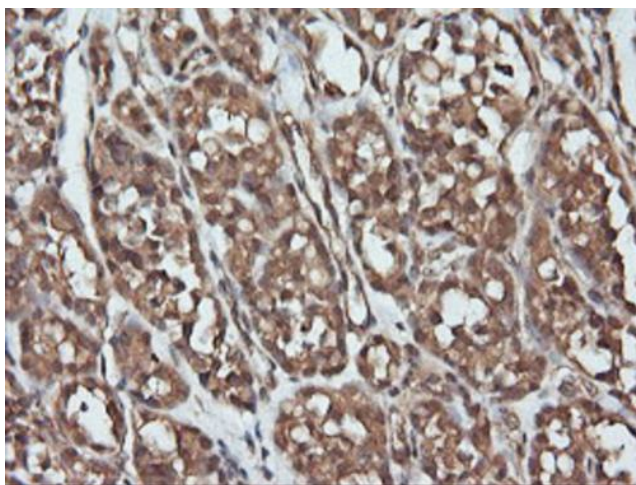
Western blot analysis of extracts (35ug) from 9 different cell lines by using anti-PARVA monoclonal antibody (HepG2: human; HeLa: human; SVT2: mouse; A549: human; COS7: monkey; Jurkat: human; MDCK: canine; PC12: rat; MCF7: human).



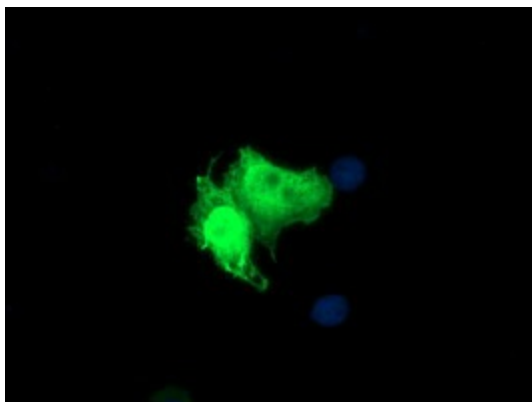
Immunohistochemical staining of paraffin-embedded Human pancreas tissue within the normal limits using anti-PARVA mouse monoclonal antibody. Heat-induced epitope retrieval by EDTA solution buffer pH 8.0 at 120°C for 3 min.



Immunohistochemical staining of paraffin-embedded Carcinoma of Human pancreas tissue using anti-PARVA mouse monoclonal antibody. Heat-induced epitope retrieval by EDTA solution buffer pH 8.0 at 120°C for 3 min.



Immunohistochemical staining of paraffin-embedded Carcinoma of Human thyroid tissue using anti-PARVA mouse monoclonal antibody. Heat-induced epitope retrieval by EDTA solution buffer pH 8.0 at 120°C for 3 min.



Anti-PARVA mouse monoclonal antibody ([TA505991]) immunofluorescent staining of COS7 cells transiently transfected by pCMV6-ENTRY PARVA ([RC205086]).