

## Product datasheet for **TA505982BM**

### TRIM38 Mouse Monoclonal Antibody (HRP conjugated) [Clone ID: OTI16D9]

#### Product data:

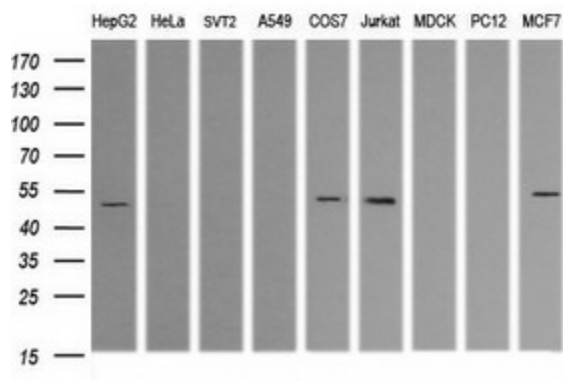
Product Type:	Primary Antibodies
Clone Name:	OTI16D9
Applications:	IHC, WB
Recommended Dilution:	WB 1:200~4000, IHC 1:150
Reactivity:	Human, Monkey
Host:	Mouse
Isotype:	IgG1
Clonality:	Monoclonal
Immunogen:	Human recombinant protein fragment corresponding to amino acids 1-265 of human TRIM38 (NP_006346) produced in HEK293T cell.
Formulation:	PBS (pH 7.3) containing 1% BSA, 50% glycerol.
Concentration:	0.5 mg/ml
Purification:	Purified from mouse ascites fluids or tissue culture supernatant by affinity chromatography (protein A/G)
Conjugation:	HRP
Storage:	Store at -20°C as received.
Stability:	Stable for 12 months from date of receipt.
Predicted Protein Size:	53.2 kDa
Gene Name:	tripartite motif containing 38
Database Link:	<a href="#">NP_006346</a> <a href="#">Entrez Gene 694861 Monkey</a> <a href="#">Entrez Gene 10475 Human</a> <a href="#">O00635</a>
Background:	This gene encodes a member of the tripartite motif (TRIM) family. The encoded protein contains a RING-type zinc finger, B box-type zinc finger and SPRY domain. The function of this protein has not been identified. A pseudogene of this gene is located on the long arm of chromosome 4. [provided by RefSeq, Jul 2012]
Synonyms:	RNF15; RORET



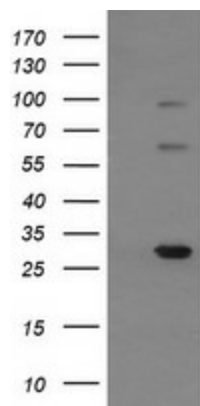
[View online »](#)

Protein Families: Druggable Genome

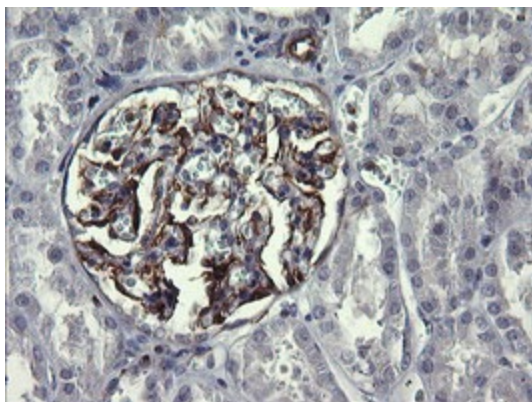
**Product images:**



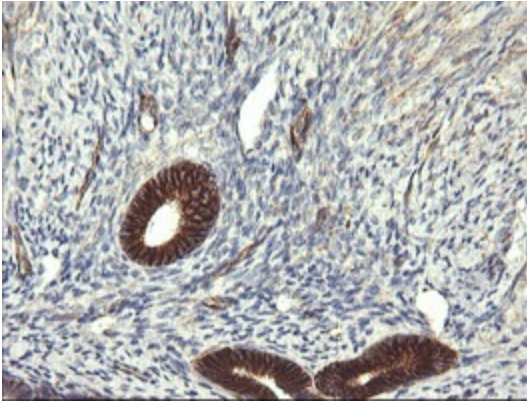
Western blot analysis of extracts (35ug) from 9 different cell lines by using anti-TRIM38 monoclonal antibody (HepG2: human; HeLa: human; SVT2: mouse; A549: human; COS7: monkey; Jurkat: human; MDCK: canine; PC12: rat; MCF7: human).



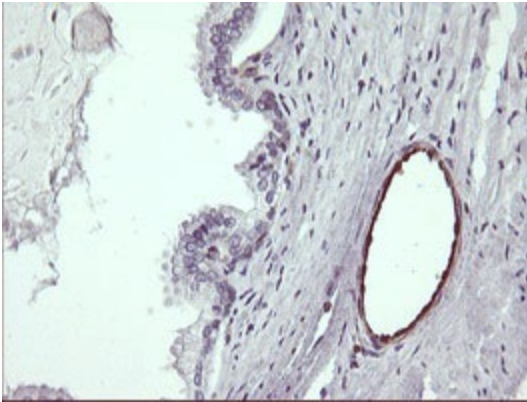
Negative control HEK293T lysate (Left lane) or HEK293T lysate containing recombinant protein fragment for human TRIM38 (NP\_006346) gene (amino acids 1-265) (Right lane). Equivalent amounts (5 ug per lane) were separated by SDS-PAGE and then immunoblotted with anti-TRIM38.



Immunohistochemical staining of paraffin-embedded Human Kidney tissue within the normal limits using anti-TRIM38 mouse monoclonal antibody. (Heat-induced epitope retrieval by 10mM citric buffer, pH6.0, 120°C for 3min, [TA505982])



Immunohistochemical staining of paraffin-embedded Human endometrium tissue within the normal limits using anti-TRIM38 mouse monoclonal antibody. (Heat-induced epitope retrieval by 10mM citric buffer, pH6.0, 120°C for 3min, [TA505982])



Immunohistochemical staining of paraffin-embedded Human prostate tissue within the normal limits using anti-TRIM38 mouse monoclonal antibody. (Heat-induced epitope retrieval by 10mM citric buffer, pH6.0, 120°C for 3min, [TA505982])