

## Product datasheet for **TA505974**

### NY-ESO-1 (CTAG1B) Mouse Monoclonal Antibody [Clone ID: OTI9H6]

#### Product data:

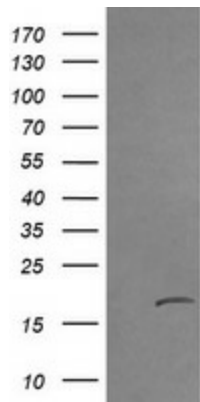
|                         |  |
|-------------------------|--|
| Product Type:           | Primary Antibodies   |
| Clone Name:             | OTI9H6   |
| Applications:           | FC, IF, IHC, WB  |
| Recommended Dilution:   | WB 1:2000, IHC 1:150, IF 1:100   |
| Reactivity:             | Human  |
| Host:                   | Mouse  |
| Isotype:                | IgG1   |
| Clonality:              | Monoclonal   |
| Immunogen:              | Full length human recombinant protein of human CTAG1B(NP_001318) produced in HEK293T cell.   |
| Formulation:            | PBS (pH 7.3) containing 1% BSA, 50% glycerol and 0.02% sodium azide.   |
| Concentration:          | 1 mg/ml  |
| Purification:           | Purified from mouse ascites fluids or tissue culture supernatant by affinity chromatography (protein A/G)  |
| Conjugation:            | Unconjugated   |
| Storage:                | Store at -20°C as received.  |
| Stability:              | Stable for 12 months from date of receipt.   |
| Predicted Protein Size: | 17.8 kDa   |
| Gene Name:              | cancer/testis antigen 1B   |
| Database Link:          | <a href="#">NP_001318</a><br><a href="#">Entrez Gene 1485 Human</a><br><a href="#">P78358</a>  |
| Background:             | The protein encoded by this gene is an antigen that is overexpressed in many cancers but that is also expressed in normal testis. This gene is found in a duplicated region of the X-chromosome and therefore has a neighboring gene of identical sequence. [provided by RefSeq, Jan 2012] |
| Synonyms:               | CT6.1; CTAG; CTAG1; ESO1; LAGE-2; LAGE2B; NY-ESO-1   |



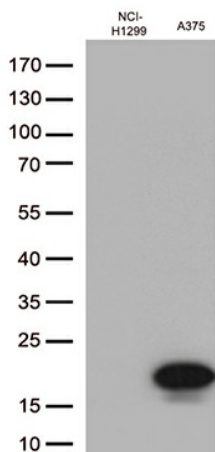
[View online »](#)

Protein Families: Druggable Genome

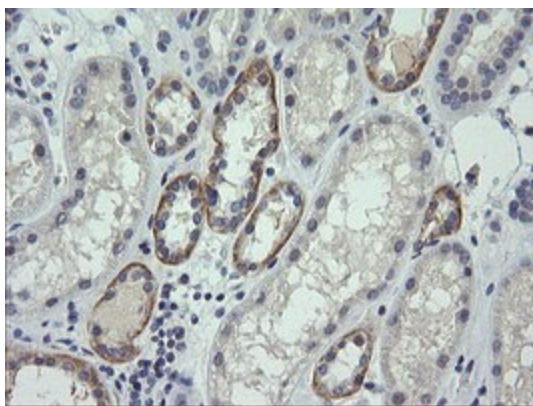
**Product images:**



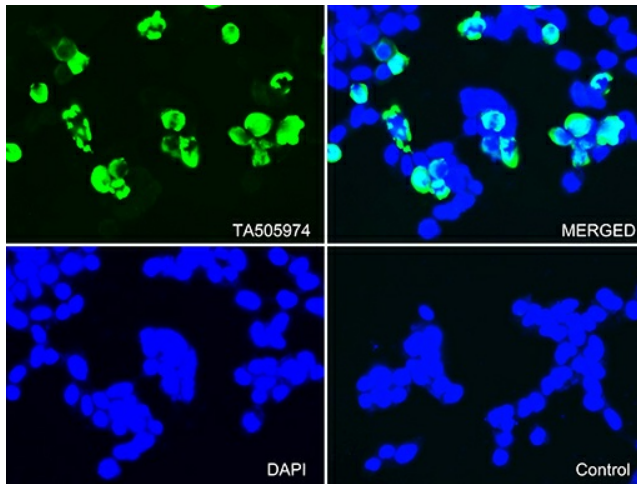
HEK293T cells were transfected with the pCMV6-ENTRY control (Left lane) or pCMV6-ENTRY CTAG1B ([RC213318], Right lane) cDNA for 48 hrs and lysed. Equivalent amounts of cell lysates (5 ug per lane) were separated by SDS-PAGE and immunoblotted with anti-CTAG1B. Positive lysates [LY400527] (100ug) and [LC400527] (20ug) can be purchased separately from OriGene.



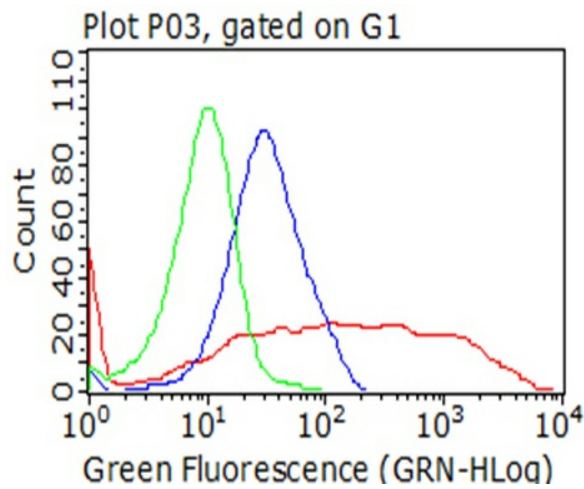
Western blot analysis of extracts (35ug) from 2 cell lines lysates by using anti-CTAG1B monoclonal antibody (1:500).



Immunohistochemical staining of paraffin-embedded Human Kidney tissue within the normal limits using anti-CTAG1B mouse monoclonal antibody. (Heat-induced epitope retrieval by 10mM citric buffer, pH6.0, 120°C for 3min, TA505974)



Immunofluorescent staining of 293T cells transfected by pCMV6-ENTRY CTAG1B ([RC213318]) using anti-CTAG1B antibody (TA505974/green, upper left; DAPI/blue, lower left; MERGED, upper right). 293T cells transfected with empty vector served as a negative control (MERGED, lower right) (1:100).



Flow cytometric analysis of living 293T cells transfected with CTAG1B overexpression plasmid ([RC213318]), Red)/empty vector ([PS100001], Blue) using anti-CTAG1B antibody (TA505974). Cells incubated with a non-specific antibody (Green) were used as isotype control (1:100).