

Product datasheet for **TA505966S**

Hsc70 (HSPA8) Mouse Monoclonal Antibody [Clone ID: OT11H3]

Product data:

Product Type:	Primary Antibodies
Clone Name:	OT11H3
Applications:	IF, IHC, WB
Recommended Dilution:	WB 1:1000, IHC 1:150, IF 1:100
Reactivity:	Human, Mouse, Rat
Host:	Mouse
Isotype:	IgG3
Clonality:	Monoclonal
Immunogen:	Full length human recombinant protein of human HSPA8(NP_006588) produced in HEK293T cell.
Formulation:	PBS (pH 7.3) containing 1% BSA, 50% glycerol and 0.02% sodium azide.
Concentration:	1 mg/ml
Purification:	Purified from mouse ascites fluids or tissue culture supernatant by affinity chromatography (protein A/G)
Conjugation:	Unconjugated
Storage:	Store at -20°C as received.
Stability:	Stable for 12 months from date of receipt.
Predicted Protein Size:	70.7 kDa
Gene Name:	heat shock protein family A (Hsp70) member 8
Database Link:	NP_006588 Entrez Gene 15481 Mouse Entrez Gene 24468 Rat Entrez Gene 3312 Human P11142



[View online »](#)

Background:

This gene encodes a member of the heat shock protein 70 family, which contains both heat-inducible and constitutively expressed members. This protein belongs to the latter group, which are also referred to as heat-shock cognate proteins. It functions as a chaperone, and binds to nascent polypeptides to facilitate correct folding. It also functions as an ATPase in the disassembly of clathrin-coated vesicles during transport of membrane components through the cell. Alternatively spliced transcript variants encoding different isoforms have been found for this gene. [provided by RefSeq, Aug 2011]

Synonyms:

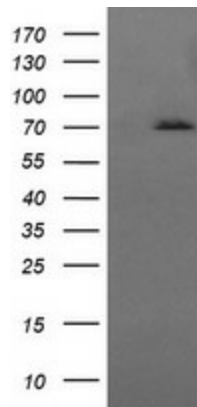
HEL-33; HEL-S-72p; HSC54; HSC70; HSC71; HSP71; HSP73; HSPA10; LAP-1; LAP1; NIP71

Protein Families:

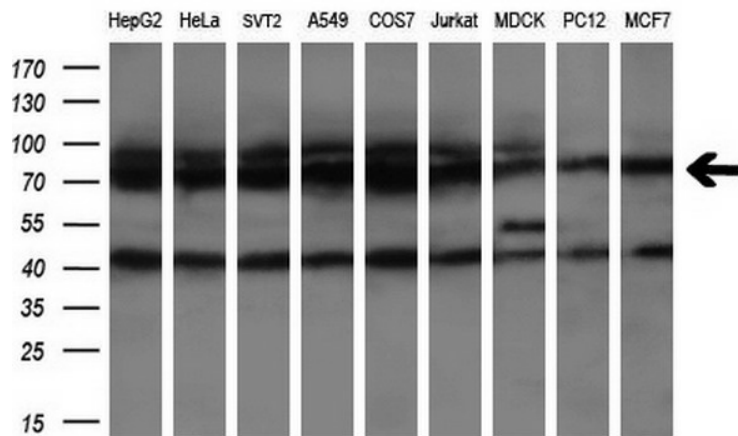
Stem cell - Pluripotency

Protein Pathways:

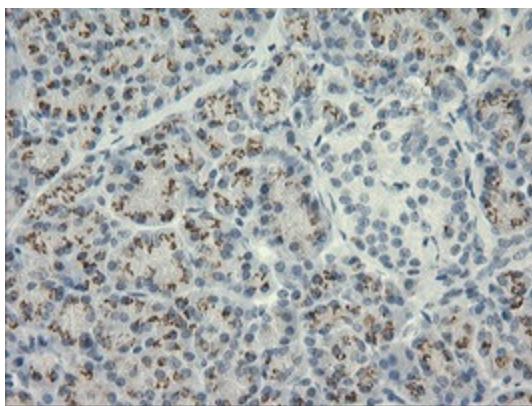
Antigen processing and presentation, Endocytosis, MAPK signaling pathway, Spliceosome

Product images:


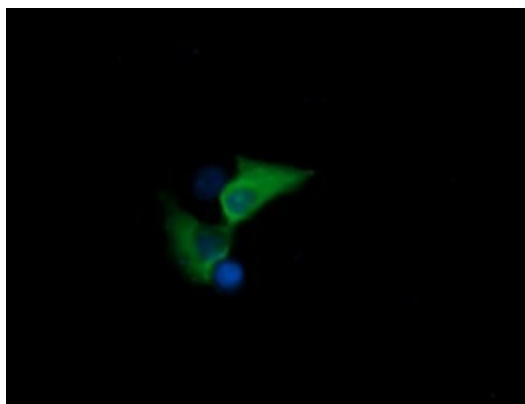
HEK293T cells were transfected with the pCMV6-ENTRY control (Cat# [PS100001], Left lane) or pCMV6-ENTRY HSPA8 (Cat# [RC202209], Right lane) cDNA for 48 hrs and lysed. Equivalent amounts of cell lysates (5 ug per lane) were separated by SDS-PAGE and immunoblotted with anti-HSPA8(Cat# [TA505966]). Positive lysates [LY401978] (100ug) and [LC401978] (20ug) can be purchased separately from OriGene.



Western blot analysis of extracts (35ug) from 9 different cell lines by using anti-HSPA8 monoclonal antibody at 1:200 dilution. (HepG2: human; HeLa: human; SVT2: mouse; A549: human; COS7: monkey; Jurkat: human; MDCK: canine; PC12: rat; MCF7: human)



Immunohistochemical staining of paraffin-embedded Human pancreas tissue within the normal limits using anti-HSPA8 mouse monoclonal antibody. (Heat-induced epitope retrieval by 10mM citric buffer, pH6.0, 120°C for 3min, [TA505966])



Anti-HSPA8 mouse monoclonal antibody ([TA505966]) immunofluorescent staining of COS7 cells transiently transfected by pCMV6-ENTRY HSPA8 ([RC202209]).