

Product datasheet for **TA505957M**

NY-ESO-1 (CTAG1B) Mouse Monoclonal Antibody [Clone ID: OTI1C4]

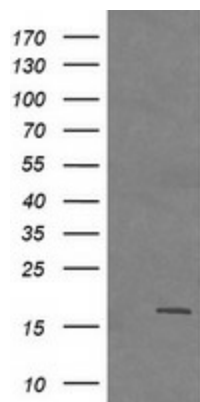
Product data:

Product Type:	Primary Antibodies
Clone Name:	OTI1C4
Applications:	FC, IF, IHC, WB
Recommended Dilution:	WB 1:2000, IHC 1:150, IF 1:100
Reactivity:	Human
Host:	Mouse
Isotype:	IgG1
Clonality:	Monoclonal
Immunogen:	Full length human recombinant protein of human CTAG1B(NP_001318) produced in HEK293T cell.
Formulation:	PBS (pH 7.3) containing 1% BSA, 50% glycerol and 0.02% sodium azide.
Concentration:	1 mg/ml
Purification:	Purified from mouse ascites fluids or tissue culture supernatant by affinity chromatography (protein A/G)
Conjugation:	Unconjugated
Storage:	Store at -20°C as received.
Stability:	Stable for 12 months from date of receipt.
Predicted Protein Size:	17.8 kDa
Gene Name:	cancer/testis antigen 1B
Database Link:	NP_001318 Entrez Gene 1485 Human P78358
Synonyms:	CT6.1; CTAG; CTAG1; ESO1; LAGE-2; LAGE2B; NY-ESO-1
Protein Families:	Druggable Genome

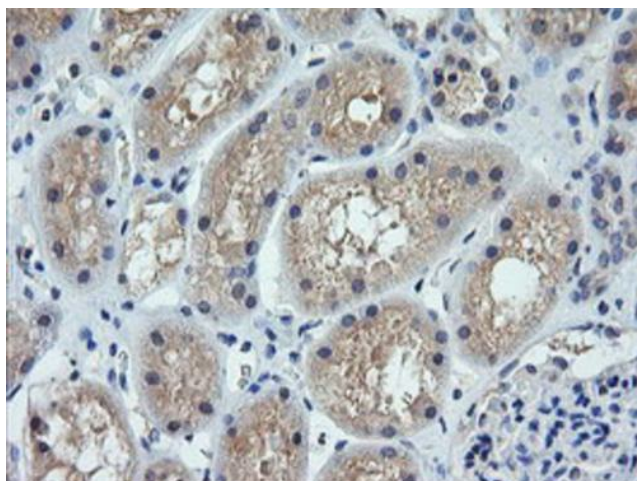


[View online »](#)

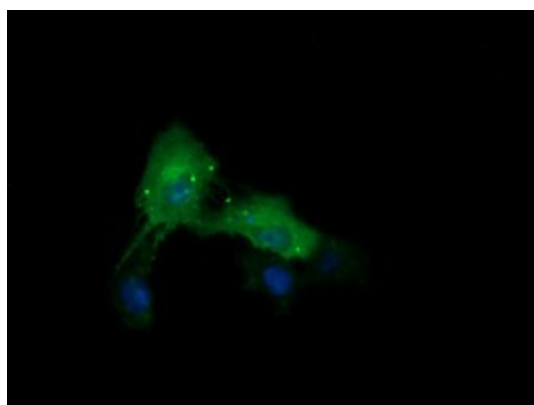
Product images:



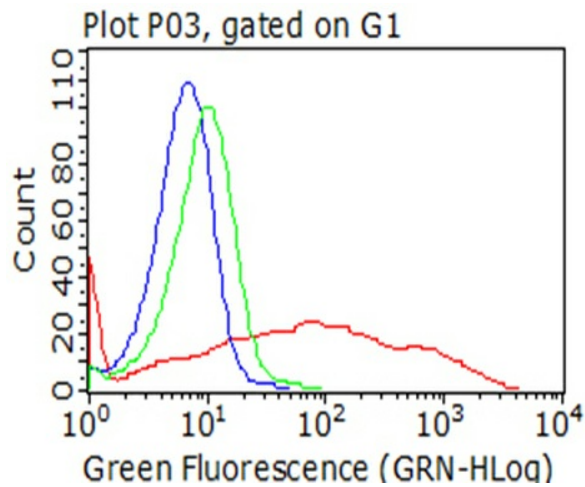
HEK293T cells were transfected with the pCMV6-ENTRY control (Left lane) or pCMV6-ENTRY CTAG1B ([RC213318], Right lane) cDNA for 48 hrs and lysed. Equivalent amounts of cell lysates (5 ug per lane) were separated by SDS-PAGE and immunoblotted with anti-CTAG1B. Positive lysates [LY400527] (100ug) and [LC400527] (20ug) can be purchased separately from OriGene.



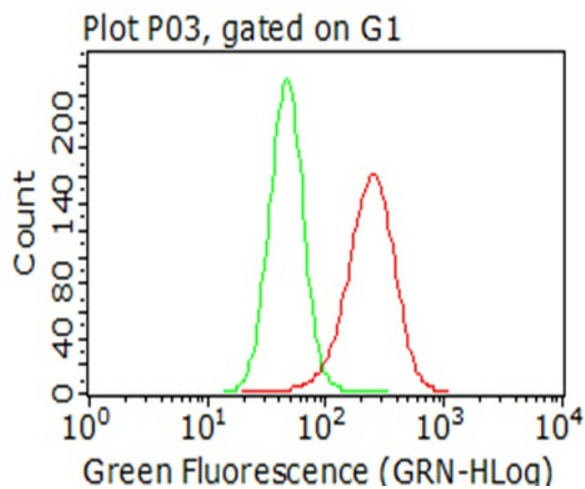
Immunohistochemical staining of paraffin-embedded Human Kidney tissue within the normal limits using anti-CTAG1B mouse monoclonal antibody. Heat-induced epitope retrieval by EDTA solution buffer pH 8.0 at 120°C for 3 min.



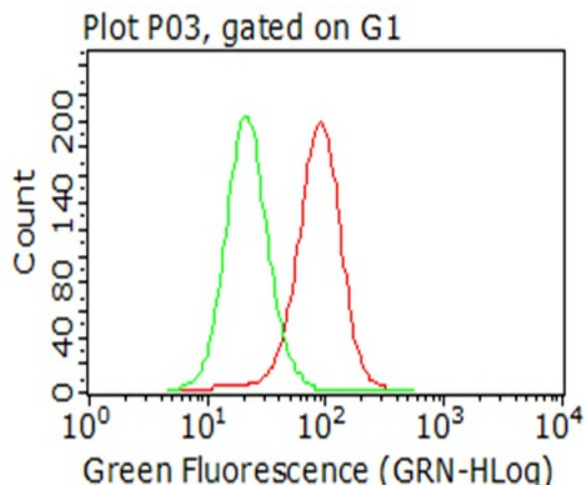
Anti-CTAG1B mouse monoclonal antibody ([TA505957]) immunofluorescent staining of COS7 cells transiently transfected by pCMV6-ENTRY CTAG1B ([RC213318]).



Flow cytometric analysis of living 293T cells transfected with CTAG1B overexpression plasmid ([RC213318]), Red)/empty vector ([PS100001], Blue) using anti-CTAG1B antibody ([TA505957]). Cells incubated with a non-specific antibody (Green) were used as isotype control (1:100).



Flow cytometric analysis of living NCI-H1299 cells, using anti-CTAG1B antibody ([TA505957], Red), compared to an isotype control (green) (1:100).



Flow cytometric analysis of living A375 cells, using anti-CTAG1B antibody ([TA505957], Red), compared to an isotype control (green) (1:100).