

Product datasheet for **TA505942M**

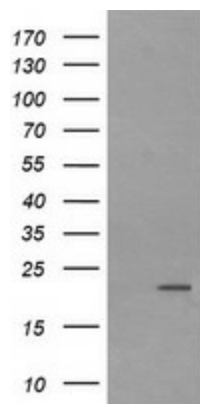
LZIC Mouse Monoclonal Antibody [Clone ID: OTI5F1]

Product data:

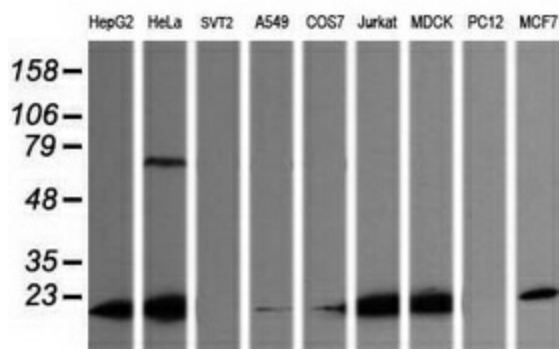
Product Type:	Primary Antibodies
Clone Name:	OTI5F1
Applications:	WB
Recommended Dilution:	WB 1:200~500
Reactivity:	Human, Dog, Monkey, Mouse, Rat
Host:	Mouse
Isotype:	IgG1
Clonality:	Monoclonal
Immunogen:	Full length human recombinant protein of human LZIC(NP_115744) produced in E.coli.
Formulation:	PBS (pH 7.3) containing 1% BSA, 50% glycerol and 0.02% sodium azide.
Concentration:	1 mg/ml
Purification:	Purified from mouse ascites fluids or tissue culture supernatant by affinity chromatography (protein A/G)
Conjugation:	Unconjugated
Storage:	Store at -20°C as received.
Stability:	Stable for 12 months from date of receipt.
Predicted Protein Size:	21.3 kDa
Gene Name:	leucine zipper and CTNNBIP1 domain containing
Database Link:	NP_115744 Entrez Gene 69151 Mouse Entrez Gene 366507 Rat Entrez Gene 100855658 Dog Entrez Gene 712335 Monkey Entrez Gene 84328 Human Q8WZA0
Synonyms:	MGC15436


[View online »](#)

Product images:



HEK293T cells were transfected with the pCMV6-ENTRY control (Left lane) or pCMV6-ENTRY LZIC ([RC209433], Right lane) cDNA for 48 hrs and lysed. Equivalent amounts of cell lysates (5 ug per lane) were separated by SDS-PAGE and immunoblotted with anti-LZIC. Positive lysates [LY410162] (100ug) and [LC410162] (20ug) can be purchased separately from OriGene.



Western blot analysis of extracts (35ug) from 9 different cell lines by using anti-LZIC monoclonal antibody (HepG2: human; HeLa: human; SVT2: mouse; A549: human; COS7: monkey; Jurkat: human; MDCK: canine; PC12: rat; MCF7: human).