

## Product datasheet for **TA505941BM**

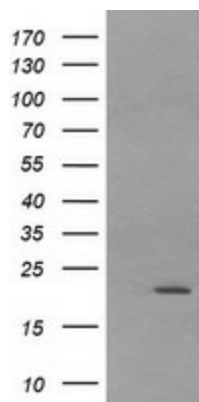
### LZIC Mouse Monoclonal Antibody (HRP conjugated) [Clone ID: OTI5E3]

#### Product data:

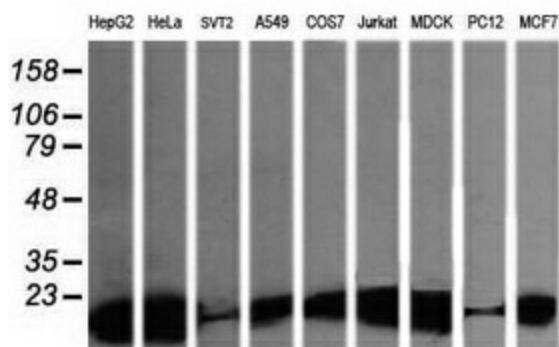
Product Type:	Primary Antibodies
Clone Name:	OTI5E3
Applications:	IHC, WB
Recommended Dilution:	WB 1:200~500, IHC 1:150
Reactivity:	Human, Dog, Rat, Monkey, Mouse
Host:	Mouse
Isotype:	IgG1
Clonality:	Monoclonal
Immunogen:	Full length human recombinant protein of human LZIC(NP_115744) produced in E.coli.
Formulation:	PBS (pH 7.3) containing 1% BSA, 50% glycerol.
Concentration:	0.5 mg/ml
Purification:	Purified from mouse ascites fluids or tissue culture supernatant by affinity chromatography (protein A/G)
Conjugation:	HRP
Storage:	Store at -20°C as received.
Stability:	Stable for 12 months from date of receipt.
Predicted Protein Size:	21.3 kDa
Gene Name:	leucine zipper and CTNNBIP1 domain containing
Database Link:	<a href="#">NP_115744</a> <a href="#">Entrez Gene 69151 Mouse</a> <a href="#">Entrez Gene 366507 Rat</a> <a href="#">Entrez Gene 100855658 Dog</a> <a href="#">Entrez Gene 712335 Monkey</a> <a href="#">Entrez Gene 84328 Human</a> <a href="#">Q8WZA0</a>
Synonyms:	MGC15436


[View online »](#)

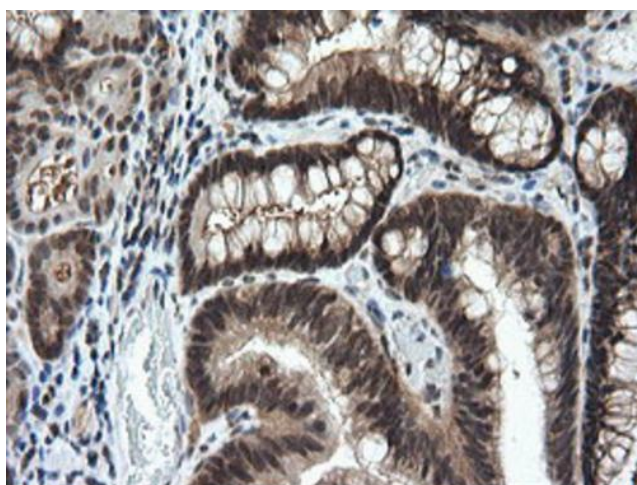
## Product images:



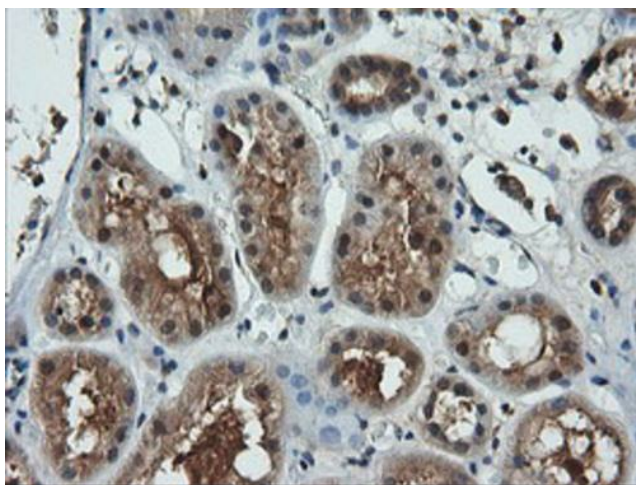
HEK293T cells were transfected with the pCMV6-ENTRY control (Cat# [PS100001], Left lane) or pCMV6-ENTRY LZIC (Cat# [RC209433], Right lane) cDNA for 48 hrs and lysed. Equivalent amounts of cell lysates (5 ug per lane) were separated by SDS-PAGE and immunoblotted with anti-LZIC (Cat# [TA505941]). Positive lysates [LY410162] (100ug) and [LC410162] (20ug) can be purchased separately from OriGene.



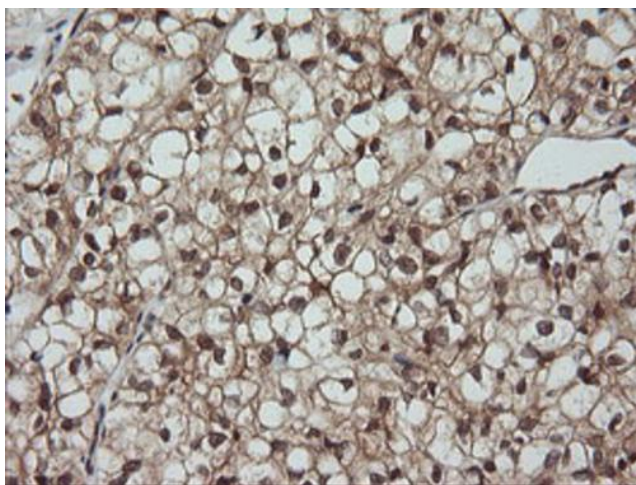
Western blot analysis of extracts (35ug) from 9 different cell lines by using anti-LZIC monoclonal antibody (HepG2: human; HeLa: human; SVT2: mouse; A549: human; COS7: monkey; Jurkat: human; MDCK: canine; PC12: rat; MCF7: human).



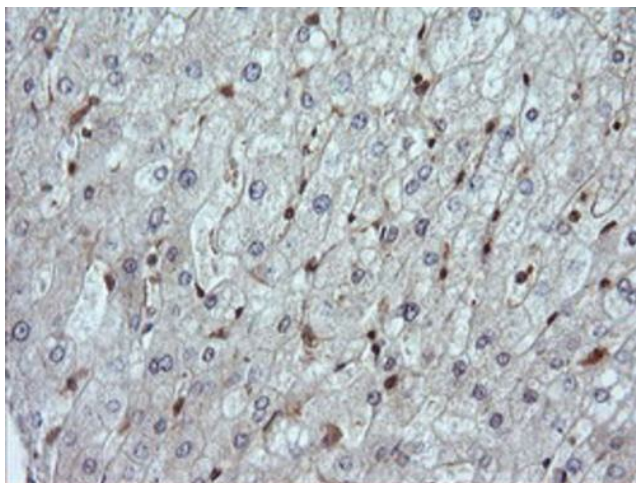
Immunohistochemical staining of paraffin-embedded Adenocarcinoma of Human colon tissue using anti-LZIC mouse monoclonal antibody. (Heat-induced epitope retrieval by 10mM citric buffer, pH6.0, 120°C for 3min, [TA505941])



Immunohistochemical staining of paraffin-embedded Human Kidney tissue within the normal limits using anti-LZIC mouse monoclonal antibody. (Heat-induced epitope retrieval by 10mM citric buffer, pH6.0, 120°C for 3min, [TA505941])

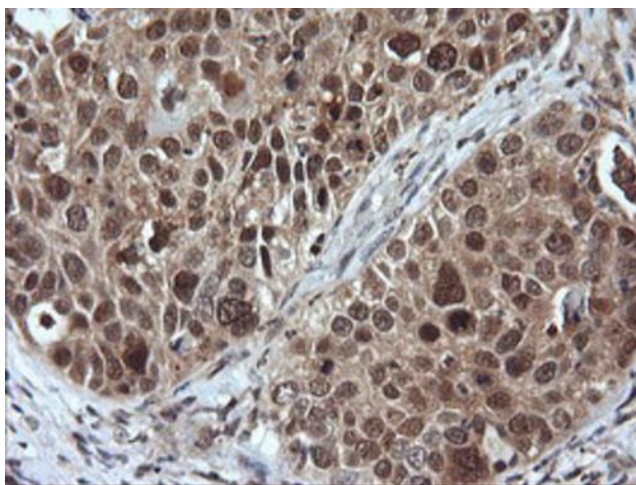


Immunohistochemical staining of paraffin-embedded Carcinoma of Human kidney tissue using anti-LZIC mouse monoclonal antibody. (Heat-induced epitope retrieval by 10mM citric buffer, pH6.0, 120°C for 3min, [TA505941])

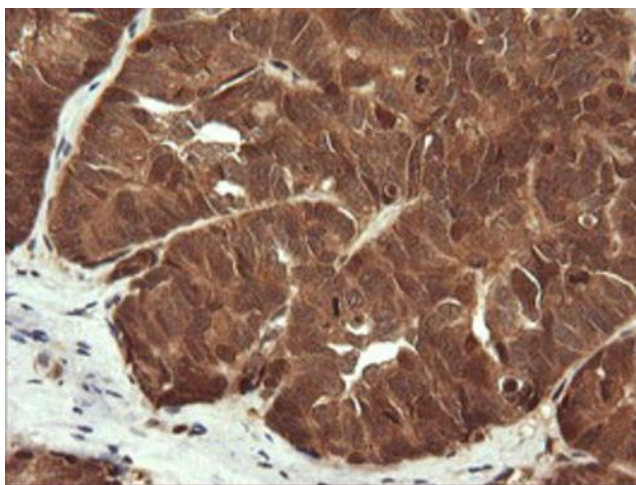


Immunohistochemical staining of paraffin-embedded Human liver tissue within the normal limits using anti-LZIC mouse monoclonal antibody. (Heat-induced epitope retrieval by 10mM citric buffer, pH6.0, 120°C for 3min, [TA505941])

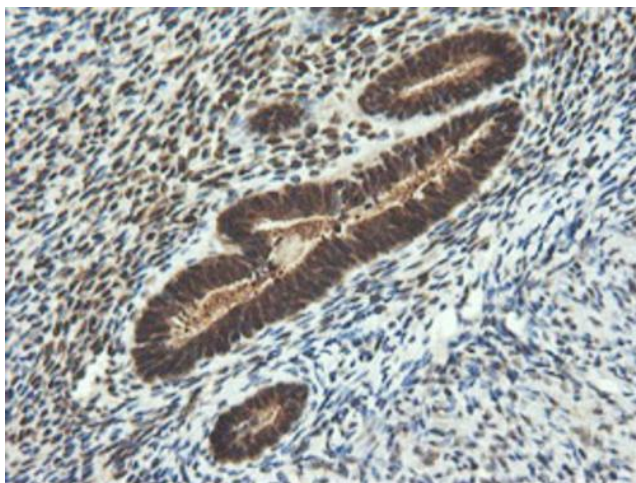




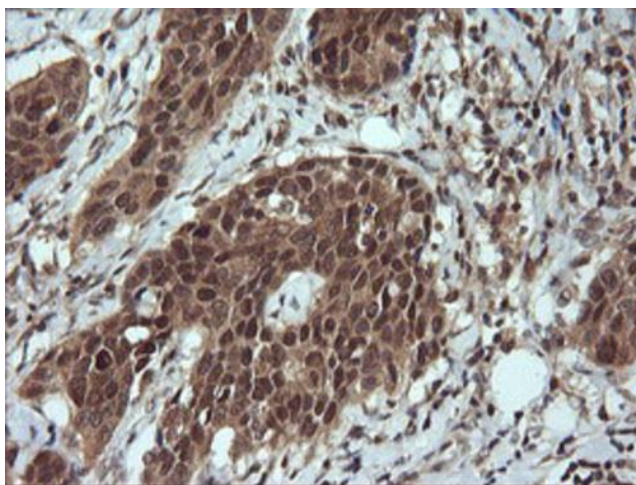
Immunohistochemical staining of paraffin-embedded Carcinoma of Human lung tissue using anti-LZIC mouse monoclonal antibody. (Heat-induced epitope retrieval by 10mM citric buffer, pH6.0, 120°C for 3min, [TA505941])



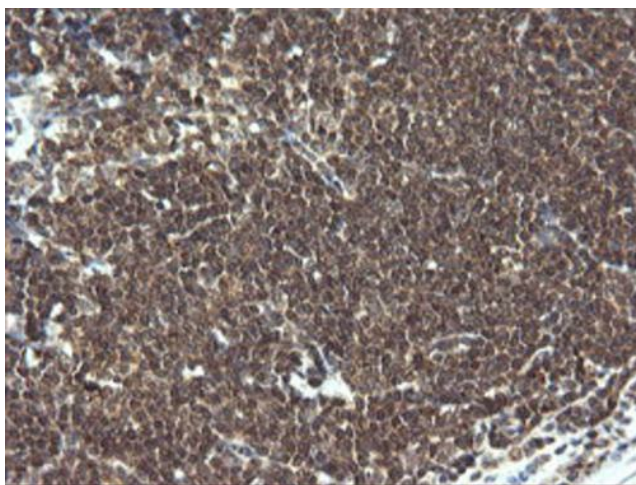
Immunohistochemical staining of paraffin-embedded Adenocarcinoma of Human ovary tissue using anti-LZIC mouse monoclonal antibody. (Heat-induced epitope retrieval by 10mM citric buffer, pH6.0, 120°C for 3min, [TA505941])



Immunohistochemical staining of paraffin-embedded Human endometrium tissue within the normal limits using anti-LZIC mouse monoclonal antibody. (Heat-induced epitope retrieval by 10mM citric buffer, pH6.0, 120°C for 3min, [TA505941])



Immunohistochemical staining of paraffin-embedded Carcinoma of Human bladder tissue using anti-LZIC mouse monoclonal antibody. (Heat-induced epitope retrieval by 10mM citric buffer, pH6.0, 120°C for 3min, [TA505941])



Immunohistochemical staining of paraffin-embedded Human lymphoma tissue using anti-LZIC mouse monoclonal antibody. (Heat-induced epitope retrieval by 10mM citric buffer, pH6.0, 120°C for 3min, [TA505941])