

## Product datasheet for **TA505923BM**

### **RASSF8 Mouse Monoclonal Antibody (HRP conjugated) [Clone ID: OTI1F12]**

#### **Product data:**

Product Type:	Primary Antibodies
Clone Name:	OTI1F12
Applications:	IF, WB
Recommended Dilution:	WB 1:2000, IF 1:100
Reactivity:	Human, Mouse, Rat
Host:	Mouse
Isotype:	IgG1
Clonality:	Monoclonal
Immunogen:	Full length human recombinant protein of human RASSF8(NP_009142) produced in HEK293T cell.
Formulation:	PBS (pH 7.3) containing 1% BSA, 50% glycerol.
Concentration:	0.5 mg/ml
Purification:	Purified from mouse ascites fluids or tissue culture supernatant by affinity chromatography (protein A/G)
Conjugation:	HRP
Storage:	Store at -20°C as received.
Stability:	Stable for 12 months from date of receipt.
Predicted Protein Size:	45.3 kDa
Gene Name:	Ras association domain family member 8
Database Link:	<a href="#">NP_009142</a> <a href="#">Entrez Gene 71323 Mouse</a> <a href="#">Entrez Gene 312846 Rat</a> <a href="#">Entrez Gene 11228 Human</a> <a href="#">Q8NHQ8</a>



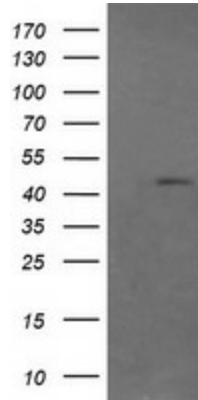
[View online »](#)

**Background:**

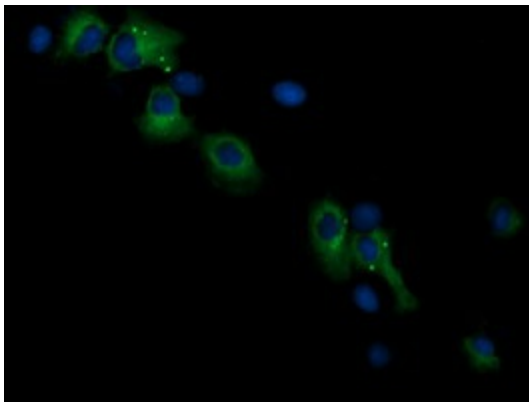
This gene encodes a member of the Ras-association domain family (RASSF) of tumor suppressor proteins. This gene is essential for maintaining adherens junction function in epithelial cells and has a role in epithelial cell migration. It is a lung tumor suppressor gene candidate. A chromosomal translocation t(12;22)(p11.2;q13.3) leading to the fusion of this gene and the FBLN1 gene is found in a complex type of synpolydactyly. Multiple alternatively spliced transcript variants encoding different isoforms have been found for this gene. [provided by RefSeq, May

**Synonyms:**

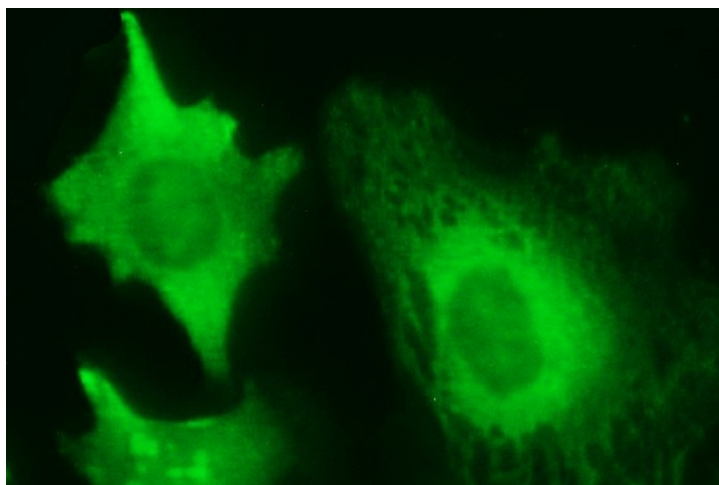
C12orf2; HOJ1

**Product images:**


HEK293T cells were transfected with the pCMV6-ENTRY control (Left lane) or pCMV6-ENTRY RASSF8 ([RC206104], Right lane) cDNA for 48 hrs and lysed. Equivalent amounts of cell lysates (5 ug per lane) were separated by SDS-PAGE and immunoblotted with anti-RASSF8. Positive lysates [LY402108] (100ug) and [LC402108] (20ug) can be purchased separately from OriGene.



Anti-RASSF8 mouse monoclonal antibody ([TA505923]) immunofluorescent staining of COS7 cells transiently transfected by pCMV6-ENTRY RASSF8 ([RC206104]).



Immunofluorescent staining of HeLa cells using anti-RASSF8 mouse monoclonal antibody ([TA505923]).