

## Product datasheet for **TA505917S**

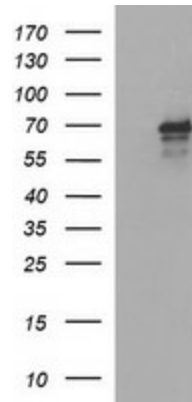
### TRIM45 Mouse Monoclonal Antibody [Clone ID: OTI2B11]

#### Product data:

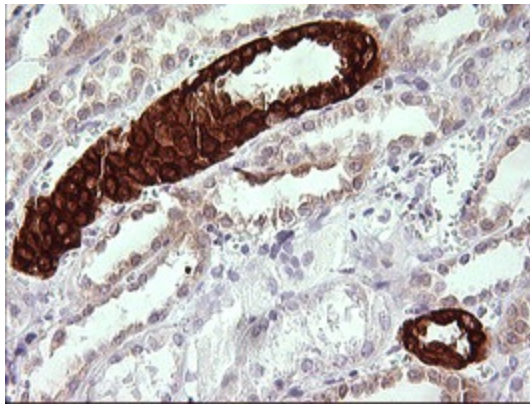
|                         |   |
|-------------------------|---|
| Product Type:           | Primary Antibodies  |
| Clone Name:             | OTI2B11   |
| Applications:           | IHC, WB   |
| Recommended Dilution:   | WB 1:4000, IHC 1:150  |
| Reactivity:             | Human, Mouse, Rat   |
| Host:                   | Mouse   |
| Isotype:                | IgG2b   |
| Clonality:              | Monoclonal  |
| Immunogen:              | Human recombinant protein fragment corresponding to amino acids 288-580 of human TRIM45 (NP_079464) produced in E.coli. |
| Formulation:            | PBS (pH 7.3) containing 1% BSA, 50% glycerol and 0.02% sodium azide.  |
| Concentration:          | 1 mg/ml   |
| Purification:           | Purified from mouse ascites fluids or tissue culture supernatant by affinity chromatography (protein A/G)               |
| Conjugation:            | Unconjugated  |
| Storage:                | Store at -20°C as received.   |
| Stability:              | Stable for 12 months from date of receipt.  |
| Predicted Protein Size: | 64.2 kDa  |
| Gene Name:              | tripartite motif containing 45  |
| Database Link:          | <a href="#">NP_079464</a><br><a href="#">Entrez Gene 80263 Human</a><br><a href="#">Q9H8W5</a>                          |
| Synonyms:               | RNF99   |



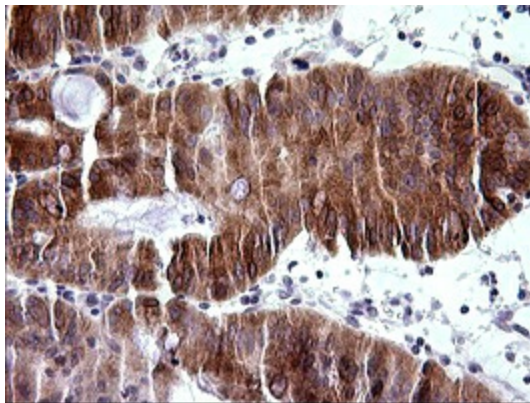
[View online »](#)

**Product images:**

HEK293T cells were transfected with the pCMV6-ENTRY control (Cat# [PS100001], Left lane) or pCMV6-ENTRY TRIM45 (Cat# [RC215738], Right lane) cDNA for 48 hrs and lysed. Equivalent amounts of cell lysates (5 ug per lane) were separated by SDS-PAGE and immunoblotted with anti-TRIM45 (Cat# [TA505917]). Positive lysates [LY410850] (100ug) and [LC410850] (20ug) can be purchased separately from OriGene.



Immunohistochemical staining of paraffin-embedded Human Kidney tissue within the normal limits using anti-TRIM45 mouse monoclonal antibody. (Heat-induced epitope retrieval by 10mM citric buffer, pH6.0, 120°C for 3min, [TA505917])



Immunohistochemical staining of paraffin-embedded Carcinoma of Human pancreas tissue using anti-TRIM45 mouse monoclonal antibody. (Heat-induced epitope retrieval by 10mM citric buffer, pH6.0, 120°C for 3min, [TA505917])