

## Product datasheet for **TA505916S**

### RFX3 Mouse Monoclonal Antibody [Clone ID: OTI3F7]

#### Product data:

Product Type:	Primary Antibodies
Clone Name:	OTI3F7
Applications:	WB
Recommended Dilution:	WB 1:2000
Reactivity:	Human, Mouse
Host:	Mouse
Isotype:	IgG2a
Clonality:	Monoclonal
Immunogen:	Full length human recombinant protein of human RFX3 (NP_602304) produced in HEK293T cell.
Formulation:	PBS (pH 7.3) containing 1% BSA, 50% glycerol and 0.02% sodium azide.
Concentration:	1 mg/ml
Purification:	Purified from mouse ascites fluids or tissue culture supernatant by affinity chromatography (protein A/G)
Conjugation:	Unconjugated
Storage:	Store at -20°C as received.
Stability:	Stable for 12 months from date of receipt.
Predicted Protein Size:	83.3 kDa
Gene Name:	regulatory factor X3
Database Link:	<a href="#">NP_602304</a> <a href="#">Entrez Gene 19726 Mouse</a> <a href="#">Entrez Gene 5991 Human</a> <a href="#">P48380</a>



[View online »](#)

**Background:**

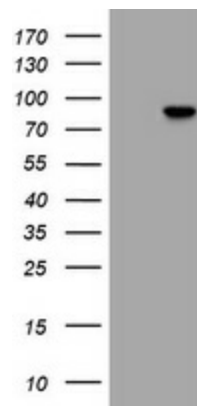
This gene is a member of the regulatory factor X gene family, which encodes transcription factors that contain a highly-conserved winged helix DNA binding domain. The protein encoded by this gene is structurally related to regulatory factors X1, X2, X4, and X5. It is a transcriptional activator that can bind DNA as a monomer or as a heterodimer with other RFX family members. Two transcript variants encoding different isoforms have been described for this gene, and at least one of the variants utilizes alternative polyadenylation signals. [provided by RefSeq, Jul

**Synonyms:**

bA32F11.1

**Protein Families:**

Transcription Factors

**Product images:**

HEK293T cells were transfected with the pCMV6-ENTRY control (Cat# [PS100001], Left lane) or pCMV6-ENTRY RFX3 (Cat# [RC201137], Right lane) cDNA for 48 hrs and lysed. Equivalent amounts of cell lysates (5 ug per lane) were separated by SDS-PAGE and immunoblotted with anti-RFX3 (Cat# [TA505916]). Positive lysates [LY403344] (100ug) and [LC403344] (20ug) can be purchased separately from OriGene.