

Product datasheet for **TA505912BM**

RNF39 Mouse Monoclonal Antibody (HRP conjugated) [Clone ID: OTI5E10]

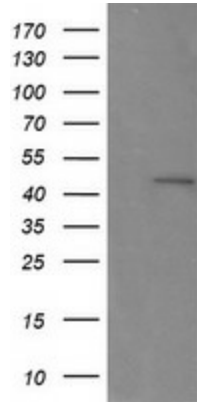
Product data:

Product Type:	Primary Antibodies
Clone Name:	OTI5E10
Applications:	IF, IHC, WB
Recommended Dilution:	WB 1:200, IHC 1:150, IF 1:100
Reactivity:	Human, Dog, Rat, Monkey, Mouse
Host:	Mouse
Isotype:	IgG1
Clonality:	Monoclonal
Immunogen:	Full length human recombinant protein of human RNF39(NP_079512) produced in HEK293T cell.
Formulation:	PBS (pH 7.3) containing 1% BSA, 50% glycerol.
Concentration:	0.5 mg/ml
Purification:	Purified from mouse ascites fluids or tissue culture supernatant by affinity chromatography (protein A/G)
Conjugation:	HRP
Storage:	Store at -20°C as received.
Stability:	Stable for 12 months from date of receipt.
Predicted Protein Size:	45.3 kDa
Gene Name:	ring finger protein 39
Database Link:	NP_079512 Entrez Gene 171387 Rat Entrez Gene 386454 Mouse Entrez Gene 488344 Dog Entrez Gene 712215 Monkey Entrez Gene 80352 Human Q9H2S5
Synonyms:	HZF; HZFW; LIRF
Protein Families:	Druggable Genome

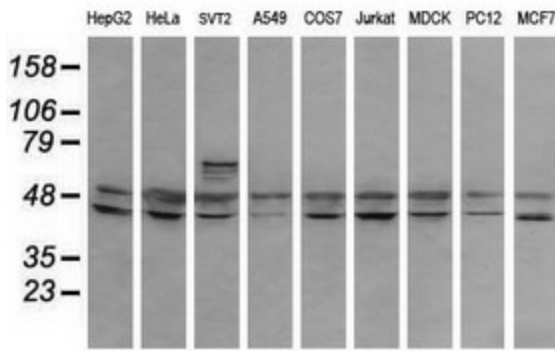


[View online »](#)

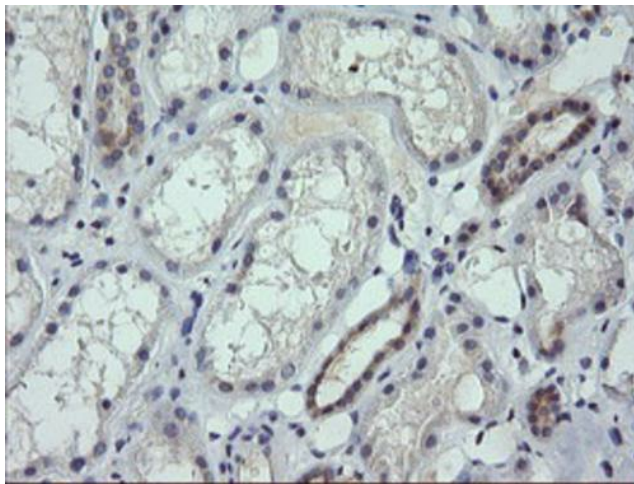
Product images:



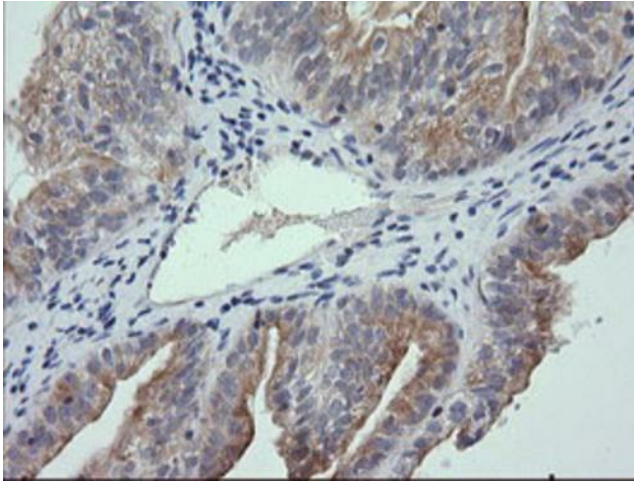
HEK293T cells were transfected with the pCMV6-ENTRY control (Cat# [PS100001], Left lane) or pCMV6-ENTRY RNF39 (Cat# [RC219332], Right lane) cDNA for 48 hrs and lysed. Equivalent amounts of cell lysates (5 ug per lane) were separated by SDS-PAGE and immunoblotted with anti-RNF39(Cat# [TA505912]). Positive lysates [LY410747] (100ug) and [LC410747] (20ug) can be purchased separately from OriGene.



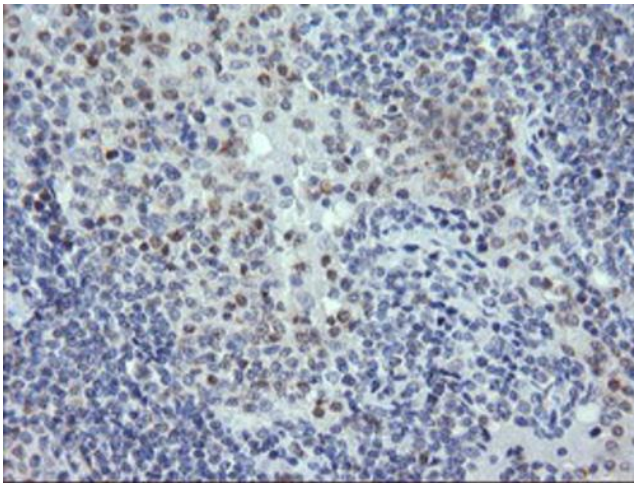
Western blot analysis of extracts (35ug) from 9 different cell lines by using anti-RNF39 monoclonal antibody (HepG2: human; HeLa: human; SVT2: mouse; A549: human; COS7: monkey; Jurkat: human; MDCK: canine; PC12: rat; MCF7: human).



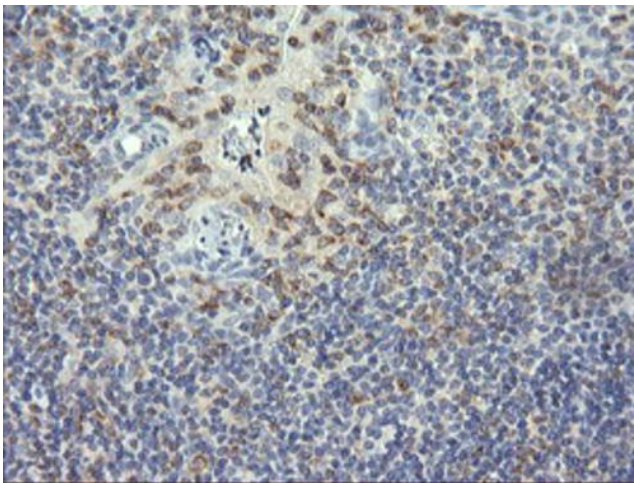
Immunohistochemical staining of paraffin-embedded Human Kidney tissue within the normal limits using anti-RNF39 mouse monoclonal antibody. (Heat-induced epitope retrieval by 10mM citric buffer, pH6.0, 120°C for 3min, [TA505912])



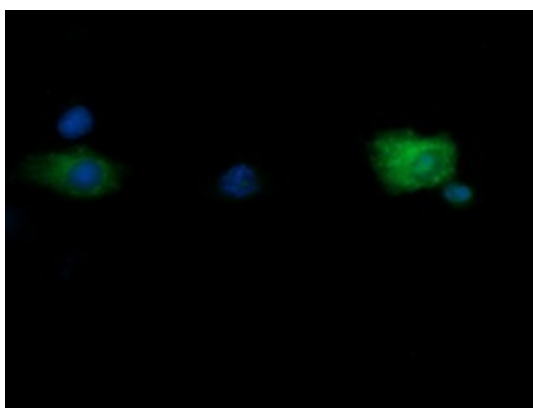
Immunohistochemical staining of paraffin-embedded Adenocarcinoma of Human ovary tissue using anti-RNF39 mouse monoclonal antibody. (Heat-induced epitope retrieval by 10mM citric buffer, pH6.0, 120°C for 3min, [TA505912])



Immunohistochemical staining of paraffin-embedded Human lymphoma tissue using anti-RNF39 mouse monoclonal antibody. (Heat-induced epitope retrieval by 10mM citric buffer, pH6.0, 120°C for 3min, [TA505912])



Immunohistochemical staining of paraffin-embedded Human tonsil within the normal limits using anti-RNF39 mouse monoclonal antibody. (Heat-induced epitope retrieval by 10mM citric buffer, pH6.0, 120°C for 3min, [TA505912])



Anti-RNF39 mouse monoclonal antibody ([TA505912]) immunofluorescent staining of COS7 cells transiently transfected by pCMV6-ENTRY RNF39 ([RC219332]).