

Product datasheet for **TA505906**

RASSF8 Mouse Monoclonal Antibody [Clone ID: OTI3F7]

Product data:

Product Type:	Primary Antibodies
Clone Name:	OTI3F7
Applications:	IF, IHC, WB
Recommended Dilution:	WB 1:2000, IHC 1:150, IF 1:100
Reactivity:	Human, Monkey, Mouse, Rat
Host:	Mouse
Isotype:	IgG1
Clonality:	Monoclonal
Immunogen:	Full length human recombinant protein of human RASSF8(NP_009142) produced in HEK293T cell.
Formulation:	PBS (pH 7.3) containing 1% BSA, 50% glycerol and 0.02% sodium azide.
Concentration:	1 mg/ml
Purification:	Purified from mouse ascites fluids or tissue culture supernatant by affinity chromatography (protein A/G)
Conjugation:	Unconjugated
Storage:	Store at -20°C as received.
Stability:	Stable for 12 months from date of receipt.
Predicted Protein Size:	45.3 kDa
Gene Name:	Ras association domain family member 8
Database Link:	NP_009142 Entrez Gene 71323 Mouse Entrez Gene 312846 Rat Entrez Gene 708284 Monkey Entrez Gene 11228 Human Q8NHQ8



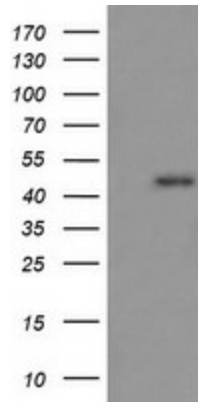
[View online »](#)

Background:

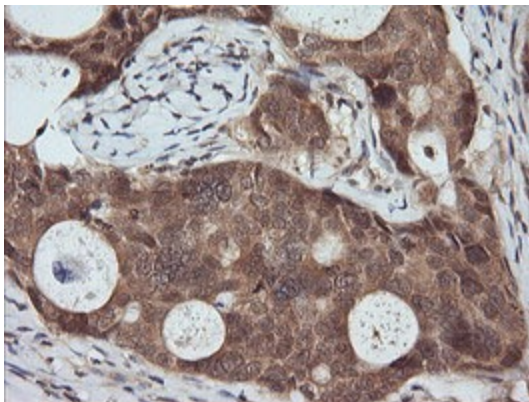
This gene encodes a member of the Ras-association domain family (RASSF) of tumor suppressor proteins. This gene is essential for maintaining adherens junction function in epithelial cells and has a role in epithelial cell migration. It is a lung tumor suppressor gene candidate. A chromosomal translocation t(12;22)(p11.2;q13.3) leading to the fusion of this gene and the FBLN1 gene is found in a complex type of synpolydactyly. Multiple alternatively spliced transcript variants encoding different isoforms have been found for this gene. [provided by RefSeq, May

Synonyms:

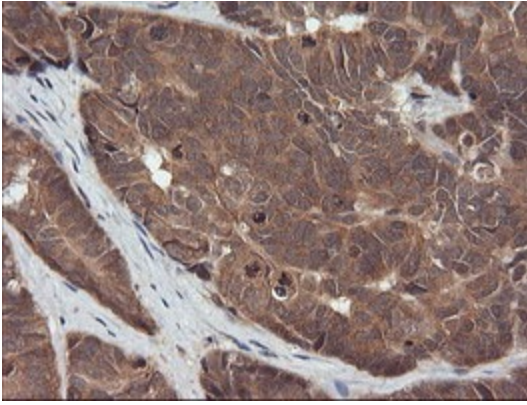
C12orf2; HOJ1

Product images:


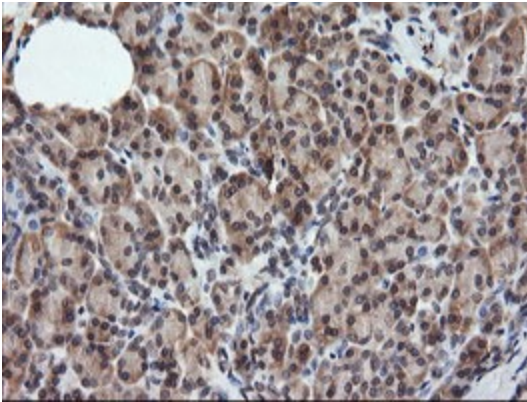
HEK293T cells were transfected with the pCMV6-ENTRY control (Left lane) or pCMV6-ENTRY RASSF8 ([RC206104], Right lane) cDNA for 48 hrs and lysed. Equivalent amounts of cell lysates (5 ug per lane) were separated by SDS-PAGE and immunoblotted with anti-RASSF8. Positive lysates [LY402108] (100ug) and [LC402108] (20ug) can be purchased separately from OriGene.



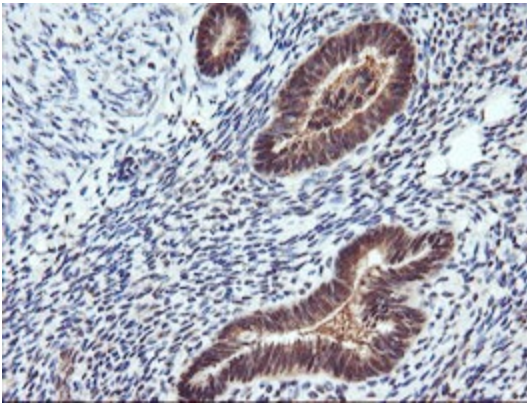
Immunohistochemical staining of paraffin-embedded Adenocarcinoma of Human breast tissue using anti-RASSF8 mouse monoclonal antibody. (Heat-induced epitope retrieval by 10mM citric buffer, pH6.0, 120°C for 3min, TA505906)



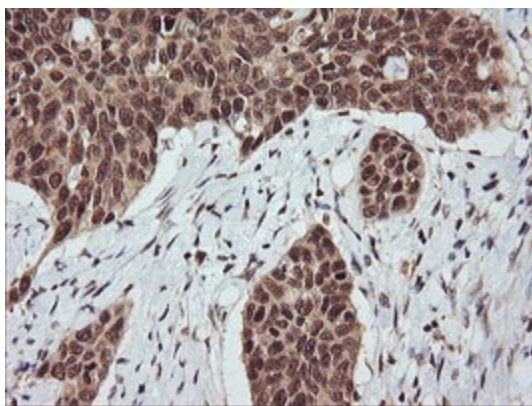
Immunohistochemical staining of paraffin-embedded Adenocarcinoma of Human ovary tissue using anti-RASSF8 mouse monoclonal antibody. (Heat-induced epitope retrieval by 10mM citric buffer, pH6.0, 120°C for 3min, TA505906)



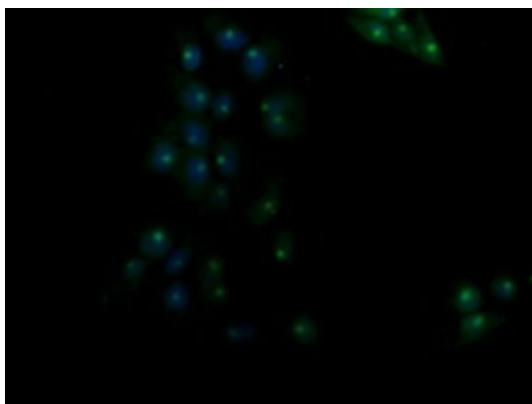
Immunohistochemical staining of paraffin-embedded Human pancreas tissue within the normal limits using anti-RASSF8 mouse monoclonal antibody. (Heat-induced epitope retrieval by 10mM citric buffer, pH6.0, 120°C for 3min, TA505906)



Immunohistochemical staining of paraffin-embedded Human endometrium tissue within the normal limits using anti-RASSF8 mouse monoclonal antibody. (Heat-induced epitope retrieval by 10mM citric buffer, pH6.0, 120°C for 3min, TA505906)



Immunohistochemical staining of paraffin-embedded Carcinoma of Human bladder tissue using anti-RASSF8 mouse monoclonal antibody. (Heat-induced epitope retrieval by 10mM citric buffer, pH6.0, 120°C for 3min, TA505906)



Anti-RASSF8 mouse monoclonal antibody (TA505906) immunofluorescent staining of COS7 cells transiently transfected by pCMV6-ENTRY RASSF8 ([RC206104]).