

Product datasheet for **TA505900M**

RASA1 Mouse Monoclonal Antibody [Clone ID: OTI2H1]

Product data:

Product Type:	Primary Antibodies
Clone Name:	OTI2H1
Applications:	IF, WB
Recommended Dilution:	WB 1:2000, IF 1:100
Reactivity:	Human, Mouse, Rat
Host:	Mouse
Isotype:	IgG1
Clonality:	Monoclonal
Immunogen:	Full length human recombinant protein of human RASA1(NP_002881) produced in HEK293T cell.
Formulation:	PBS (pH 7.3) containing 1% BSA, 50% glycerol and 0.02% sodium azide.
Concentration:	1 mg/ml
Purification:	Purified from mouse ascites fluids or tissue culture supernatant by affinity chromatography (protein A/G)
Conjugation:	Unconjugated
Storage:	Store at -20°C as received.
Stability:	Stable for 12 months from date of receipt.
Predicted Protein Size:	116.2 kDa
Gene Name:	RAS p21 protein activator 1
Database Link:	NP_002881 Entrez Gene 25676 Rat Entrez Gene 218397 Mouse Entrez Gene 5921 Human P20936



[View online »](#)

Background:

The protein encoded by this gene is located in the cytoplasm and is part of the GAP1 family of GTPase-activating proteins. The gene product stimulates the GTPase activity of normal RAS p21 but not its oncogenic counterpart. Acting as a suppressor of RAS function, the protein enhances the weak intrinsic GTPase activity of RAS proteins resulting in the inactive GDP-bound form of RAS, thereby allowing control of cellular proliferation and differentiation. Mutations leading to changes in the binding sites of either protein are associated with basal cell carcinomas. Mutations also have been associated with hereditary capillary malformations (CM) with or without arteriovenous malformations (AVM) and Parkes Weber syndrome. Alternative splicing results in two isoforms where the shorter isoform, lacking the N-terminal hydrophobic region but retaining the same activity, appears to be abundantly expressed in placental but not adult tissues. [provided by RefSeq, May 2012]

Synonyms:

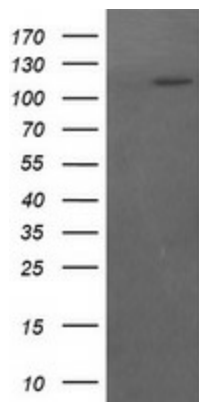
CM-AVM; CMAVM; GAP; p120; p120GAP; p120RASGAP; PKWS; RASA; RASGAP

Protein Families:

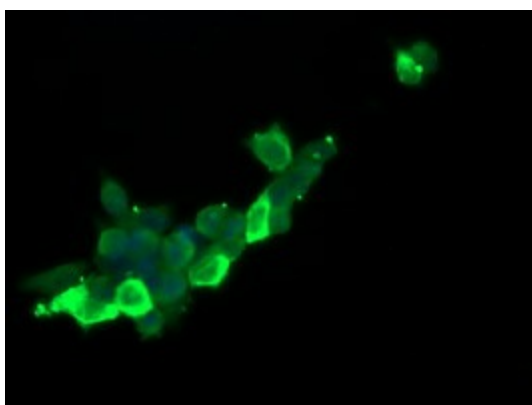
Druggable Genome

Protein Pathways:

Axon guidance, MAPK signaling pathway

Product images:


HEK293T cells were transfected with the pCMV6-ENTRY control (Left lane) or pCMV6-ENTRY RASA1 ([RC205473], Right lane) cDNA for 48 hrs and lysed. Equivalent amounts of cell lysates (5 ug per lane) were separated by SDS-PAGE and immunoblotted with anti-RASA1. Positive lysates [LY401014] (100ug) and [LC401014] (20ug) can be purchased separately from OriGene.



Anti-RASA1 mouse monoclonal antibody ([TA505900]) immunofluorescent staining of COS7 cells transiently transfected by pCMV6-ENTRY RASA1 ([RC205473]).