

Product datasheet for **TA505886AM**

Calreticulin 3 (CALR3) Mouse Monoclonal Antibody (Biotin conjugated) [Clone ID: OTI1E1]

Product data:

Product Type:	Primary Antibodies
Clone Name:	OTI1E1
Applications:	WB
Recommended Dilution:	WB 1:200~2000
Reactivity:	Human, Dog, Rat, Monkey, Mouse
Host:	Mouse
Isotype:	IgG1
Clonality:	Monoclonal
Immunogen:	Full length human recombinant protien of human CALR3(NP_659483) produced in HEK293T cell.
Formulation:	PBS (pH 7.3) containing 1% BSA, 50% glycerol and 0.02% sodium azide.
Concentration:	0.5 mg/ml
Purification:	Purified from mouse ascites fluids or tissue culture supernatant by affinity chromatography (protein A/G)
Conjugation:	Biotin
Storage:	Store at -20°C as received.
Stability:	Stable for 12 months from date of receipt.
Predicted Protein Size:	44.8 kDa
Gene Name:	calreticulin 3
Database Link:	NP_659483 Entrez Gene 73316 Mouse Entrez Gene 364529 Rat Entrez Gene 476680 Dog Entrez Gene 719532 Monkey Entrez Gene 125972 Human Q96L12



[View online »](#)

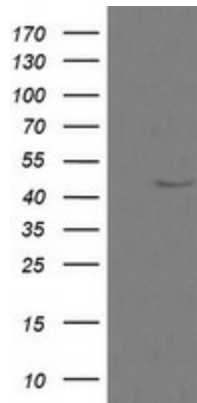
Background:

The protein encoded by this gene belongs to the calreticulin family, members of which are calcium-binding chaperones localized mainly in the endoplasmic reticulum. This protein is also localized to the endoplasmic reticulum lumen, however, its capacity for calcium-binding may be absent or much lower than other family members. This gene is specifically expressed in the testis, and may be required for sperm fertility. Mutation in this gene has been associated with familial hypertrophic cardiomyopathy. [provided by RefSeq, Dec 2011]

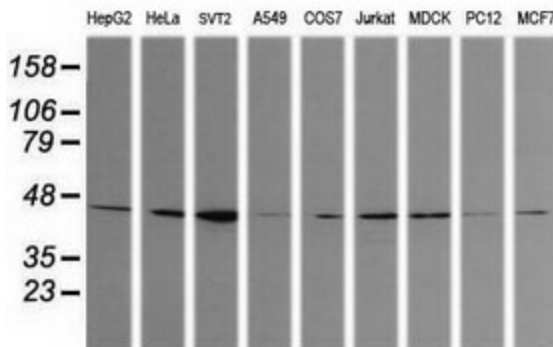
Synonyms:

CMH19; CRT2; CT93

Product images:



HEK293T cells were transfected with the pCMV6-ENTRY control (Cat# [PS100001], Left lane) or pCMV6-ENTRY CALR3 (Cat# [RC205398], Right lane) cDNA for 48 hrs and lysed. Equivalent amounts of cell lysates (5 ug per lane) were separated by SDS-PAGE and immunoblotted with anti-CALR3(Cat# [TA505886]). Positive lysates [LY403418] (100ug) and [LC403418] (20ug) can be purchased separately from OriGene.



Western blot analysis of extracts (35ug) from 9 different cell lines by using anti-CALR3 monoclonal antibody (HepG2: human; HeLa: human; SVT2: mouse; A549: human; COS7: monkey; Jurkat: human; MDCK: canine; PC12: rat; MCF7: human).