

Product datasheet for TA505880M

RALB Mouse Monoclonal Antibody [Clone ID: OTI2C4]

Product data:

| | |
|-------------------------|--|
| Product Type: | Primary Antibodies |
| Clone Name: | OTI2C4 |
| Applications: | IF, IHC, WB |
| Recommended Dilution: | WB 1:200~4000, IHC 1:150, IF 1:100 |
| Reactivity: | Human, Dog, Rat, Monkey, Mouse |
| Host: | Mouse |
| Isotype: | IgG1 |
| Clonality: | Monoclonal |
| Immunogen: | Full length human recombinant protein of human RALB(NP_002872) produced in HEK293T cell. |
| Formulation: | PBS (pH 7.3) containing 1% BSA, 50% glycerol and 0.02% sodium azide. |
| Concentration: | 1 mg/ml |
| Purification: | Purified from mouse ascites fluids or tissue culture supernatant by affinity chromatography (protein A/G) |
| Conjugation: | Unconjugated |
| Storage: | Store at -20°C as received. |
| Stability: | Stable for 12 months from date of receipt. |
| Predicted Protein Size: | 23.2 kDa |
| Gene Name: | RAS like proto-oncogene B |
| Database Link: | NP_002872 Entrez Gene 64143 Mouse Entrez Gene 116546 Rat Entrez Gene 483881 Dog Entrez Gene 695852 Monkey Entrez Gene 5899 Human P11234 |
| Background: | This gene encodes a GTP-binding protein that belongs to the small GTPase superfamily and Ras family of proteins. GTP-binding proteins mediate the transmembrane signaling initiated by the occupancy of certain cell surface receptors. [provided by RefSeq, Jul 2008] |

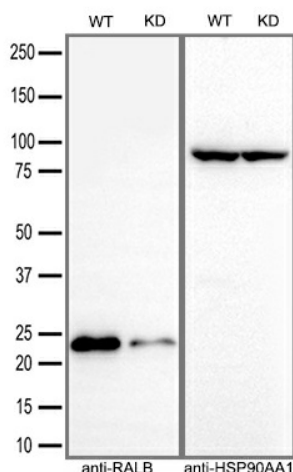

[View online »](#)

Synonyms: GTP binding protein; GTP binding protein); RAS-like protein B; v-ral simian leukemia viral oncogene homolog B; v-ral simian leukemia viral oncogene homolog B (ras related

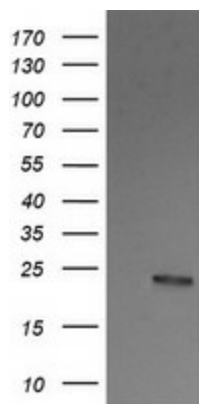
Protein Families: Druggable Genome

Protein Pathways: Pancreatic cancer, Pathways in cancer

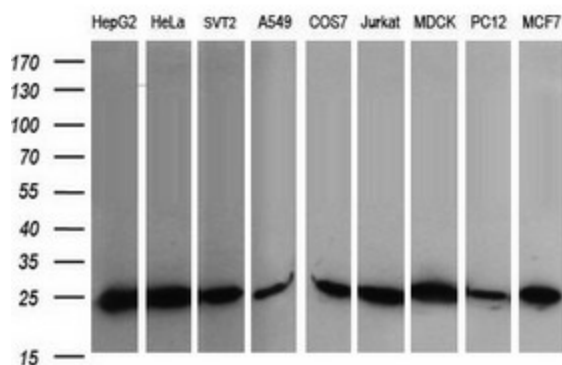
Product images:



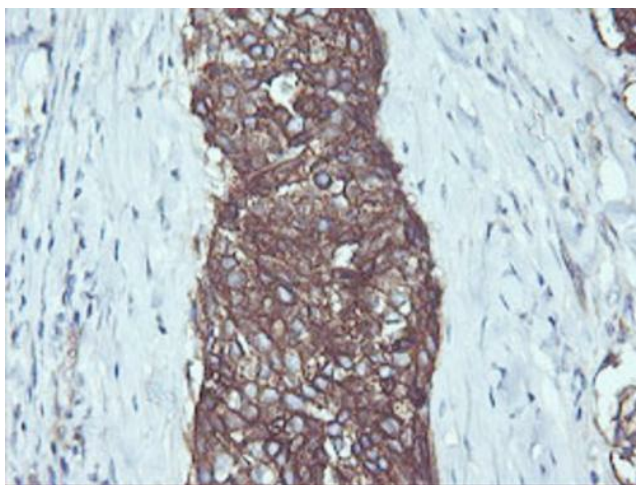
Equivalent amounts of cell lysates (30 ug per lane) of wild-type HeLa cells (WT) and RALB-Knockdown HeLa cells (KD) were separated by SDS-PAGE and immunoblotted with anti-RALB monoclonal antibody [TA505880] (1:5000). Then the blotted membrane was stripped and reprobed with anti-HSP90AA1 antibody as a loading control.



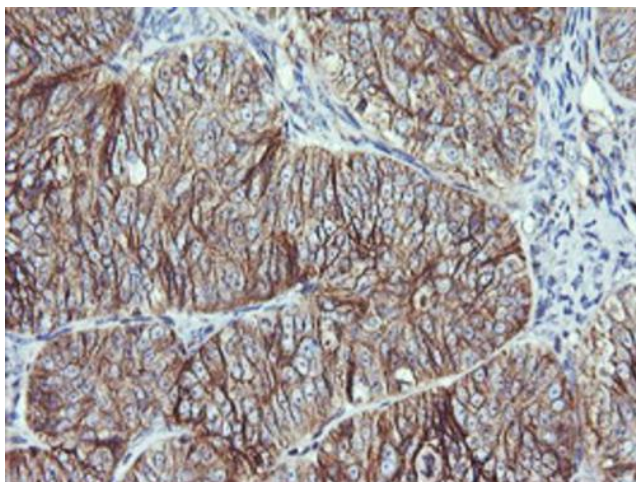
HEK293T cells were transfected with the pCMV6-ENTRY control (Cat# [PS100001], Left lane) or pCMV6-ENTRY RALB (Cat# [RC201982], Right lane) cDNA for 48 hrs and lysed. Equivalent amounts of cell lysates (5 ug per lane) were separated by SDS-PAGE and immunoblotted with anti-RALB (Cat# [TA505880]). Positive lysates [LY419049] (100ug) and [LC419049] (20ug) can be purchased separately from OriGene.



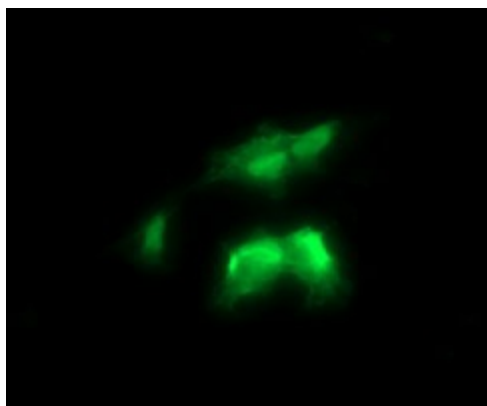
Western blot analysis of extracts (35ug) from 9 different cell lines by using anti-RALB monoclonal antibody (HepG2: human; HeLa: human; SVT2: mouse; A549: human; COS7: monkey; Jurkat: human; MDCK: canine; PC12: rat; MCF7: human).



Immunohistochemical staining of paraffin-embedded Carcinoma of Human lung tissue using anti-RALB mouse monoclonal antibody. Heat-induced epitope retrieval by EDTA solution buffer pH 8.0 at 120°C for 3 min.



Immunohistochemical staining of paraffin-embedded Adenocarcinoma of Human ovary tissue using anti-RALB mouse monoclonal antibody. Heat-induced epitope retrieval by EDTA solution buffer pH 8.0 at 120°C for 3 min.



Anti-RALB mouse monoclonal antibody ([TA505880]) immunofluorescent staining of COS7 cells transiently transfected by pCMV6-ENTRY RALB ([RC201982]).