

## Product datasheet for **TA505880**

### **RALB Mouse Monoclonal Antibody [Clone ID: OTI2C4]**

#### **Product data:**

<b>Product Type:</b>	Primary Antibodies
<b>Clone Name:</b>	OTI2C4
<b>Applications:</b>	IF, IHC, WB
<b>Recommended Dilution:</b>	WB 1:200~4000, IHC 1:150, IF 1:100
<b>Reactivity:</b>	Human, Dog, Rat, Monkey, Mouse
<b>Host:</b>	Mouse
<b>Isotype:</b>	IgG1
<b>Clonality:</b>	Monoclonal
<b>Immunogen:</b>	Full length human recombinant protein of human RALB(NP_002872) produced in HEK293T cell.
<b>Formulation:</b>	PBS (pH 7.3) containing 1% BSA, 50% glycerol and 0.02% sodium azide.
<b>Concentration:</b>	1 mg/ml
<b>Purification:</b>	Purified from mouse ascites fluids or tissue culture supernatant by affinity chromatography (protein A/G)
<b>Conjugation:</b>	Unconjugated
<b>Storage:</b>	Store at -20°C as received.
<b>Stability:</b>	Stable for 12 months from date of receipt.
<b>Predicted Protein Size:</b>	23.2 kDa
<b>Gene Name:</b>	RAS like proto-oncogene B
<b>Database Link:</b>	<a href="#">NP_002872</a> <a href="#">Entrez Gene 64143 Mouse</a> <a href="#">Entrez Gene 116546 Rat</a> <a href="#">Entrez Gene 483881 Dog</a> <a href="#">Entrez Gene 695852 Monkey</a> <a href="#">Entrez Gene 5899 Human</a> <a href="#">P11234</a>
<b>Background:</b>	This gene encodes a GTP-binding protein that belongs to the small GTPase superfamily and Ras family of proteins. GTP-binding proteins mediate the transmembrane signaling initiated by the occupancy of certain cell surface receptors. [provided by RefSeq, Jul 2008]



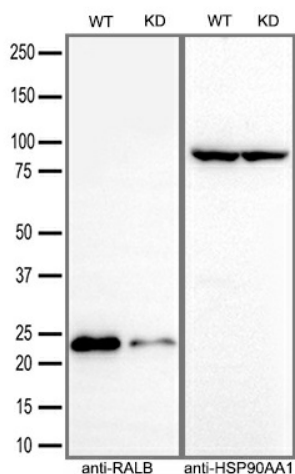
[View online »](#)

**Synonyms:** GTP binding protein; GTP binding protein); RAS-like protein B; v-ral simian leukemia viral oncogene homolog B; v-ral simian leukemia viral oncogene homolog B (ras related

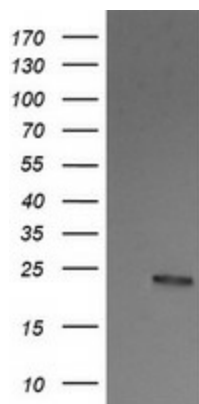
**Protein Families:** Druggable Genome

**Protein Pathways:** Pancreatic cancer, Pathways in cancer

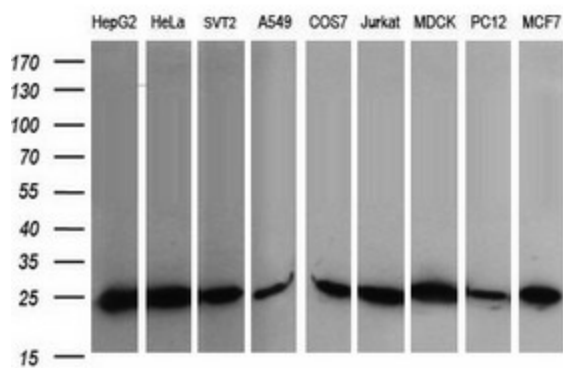
**Product images:**



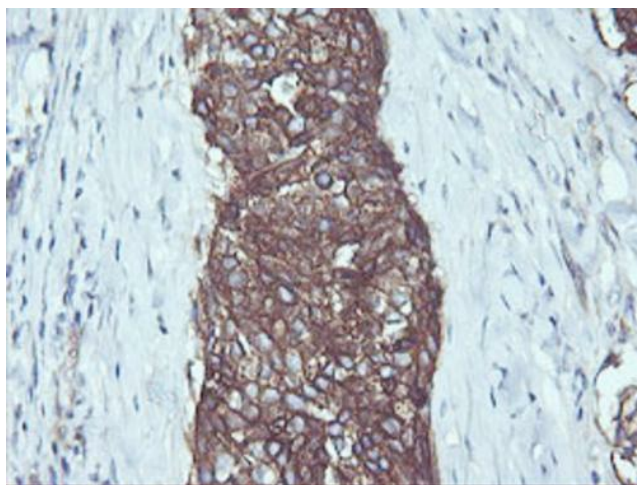
Equivalent amounts of cell lysates (30 ug per lane) of wild-type HeLa cells (WT) and RALB-Knockdown HeLa cells (KD) were separated by SDS-PAGE and immunoblotted with anti-RALB monoclonal antibody TA505880 (1:5000). Then the blotted membrane was stripped and reprobed with anti-HSP90AA1 antibody as a loading control.



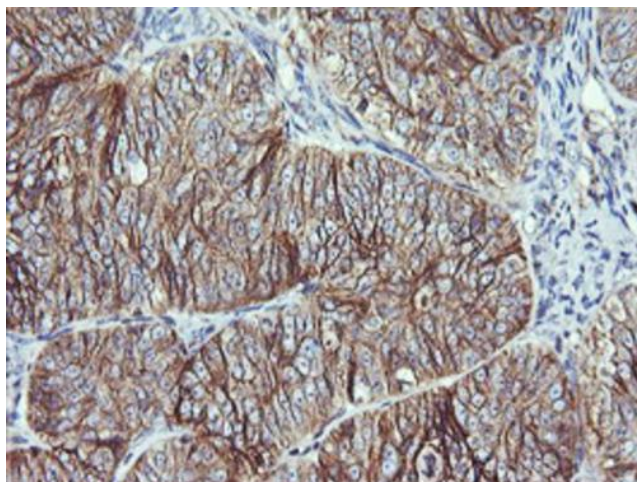
HEK293T cells were transfected with the pCMV6-ENTRY control (Cat# [PS100001], Left lane) or pCMV6-ENTRY RALB (Cat# [RC201982], Right lane) cDNA for 48 hrs and lysed. Equivalent amounts of cell lysates (5 ug per lane) were separated by SDS-PAGE and immunoblotted with anti-RALB (Cat# TA505880). Positive lysates [LY419049] (100ug) and [LC419049] (20ug) can be purchased separately from OriGene.



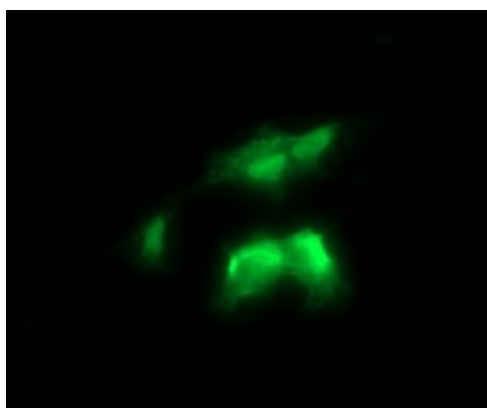
Western blot analysis of extracts (35ug) from 9 different cell lines by using anti-RALB monoclonal antibody (HepG2: human; HeLa: human; SVT2: mouse; A549: human; COS7: monkey; Jurkat: human; MDCK: canine; PC12: rat; MCF7: human).



Immunohistochemical staining of paraffin-embedded Carcinoma of Human lung tissue using anti-RALB mouse monoclonal antibody. Heat-induced epitope retrieval by EDTA solution buffer pH 8.0 at 120°C for 3 min.



Immunohistochemical staining of paraffin-embedded Adenocarcinoma of Human ovary tissue using anti-RALB mouse monoclonal antibody. Heat-induced epitope retrieval by EDTA solution buffer pH 8.0 at 120°C for 3 min.



Anti-RALB mouse monoclonal antibody (TA505880) immunofluorescent staining of COS7 cells transiently transfected by pCMV6-ENTRY RALB ([RC201982]).