

Product datasheet for **TA505873M**

Calreticulin 3 (CALR3) Mouse Monoclonal Antibody [Clone ID: OTI1D1]

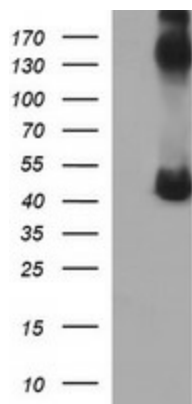
Product data:

Product Type:	Primary Antibodies
Clone Name:	OTI1D1
Applications:	WB
Recommended Dilution:	WB 1:4000
Reactivity:	Human
Host:	Mouse
Isotype:	IgG1
Clonality:	Monoclonal
Immunogen:	Full length human recombinant protein of human CALR3(NP_659483) produced in HEK293T cell.
Formulation:	PBS (pH 7.3) containing 1% BSA, 50% glycerol and 0.02% sodium azide.
Concentration:	1 mg/ml
Purification:	Purified from mouse ascites fluids or tissue culture supernatant by affinity chromatography (protein A/G)
Conjugation:	Unconjugated
Storage:	Store at -20°C as received.
Stability:	Stable for 12 months from date of receipt.
Predicted Protein Size:	44.8 kDa
Gene Name:	calreticulin 3
Database Link:	NP_659483 Entrez Gene 125972 Human Q96L12
Synonyms:	CMH19; CRT2; CT93



[View online »](#)

Product images:



HEK293T cells were transfected with the pCMV6-ENTRY control (Left lane) or pCMV6-ENTRY CALR3 ([RC205398], Right lane) cDNA for 48 hrs and lysed. Equivalent amounts of cell lysates (5 ug per lane) were separated by SDS-PAGE and immunoblotted with anti-CALR3. Positive lysates [LY403418] (100ug) and [LC403418] (20ug) can be purchased separately from OriGene.