

## Product datasheet for **TA505871**

### **THUMPD1 Mouse Monoclonal Antibody [Clone ID: OT11H6]**

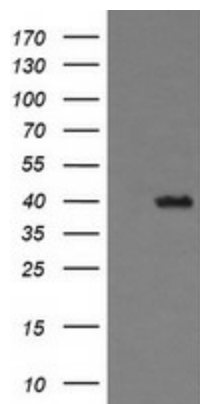
#### **Product data:**

<b>Product Type:</b>	Primary Antibodies
<b>Clone Name:</b>	OT11H6
<b>Applications:</b>	IF, IHC, WB
<b>Recommended Dilution:</b>	WB 1:200~4000, IHC 1:150, IF 1:100
<b>Reactivity:</b>	Human, Monkey, Mouse
<b>Host:</b>	Mouse
<b>Isotype:</b>	IgG1
<b>Clonality:</b>	Monoclonal
<b>Immunogen:</b>	Full length human recombinant protein of human THUMPD1(NP_060206) produced in HEK293T cell.
<b>Formulation:</b>	PBS (PH 7.3) containing 1% BSA, 50% glycerol and 0.02% sodium azide.
<b>Concentration:</b>	1 mg/ml
<b>Purification:</b>	Purified from mouse ascites fluids or tissue culture supernatant by affinity chromatography (protein A/G)
<b>Storage:</b>	Store at -20°C as received.
<b>Stability:</b>	Stable for 12 months from date of receipt.
<b>Predicted Protein Size:</b>	39.1 kDa
<b>Gene Name:</b>	THUMP domain containing 1
<b>Database Link:</b>	<a href="#">NP_060206</a> Entrez Gene <a href="#">233802</a> MouseEntrez Gene <a href="#">696746</a> MonkeyEntrez Gene <a href="#">55623</a> <a href="#">Human</a>
<b>Synonyms:</b>	Tan1

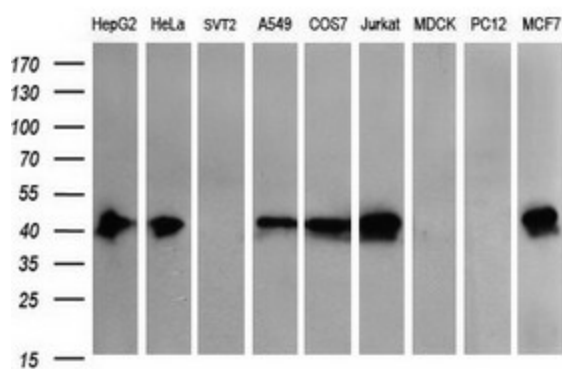


[View online »](#)

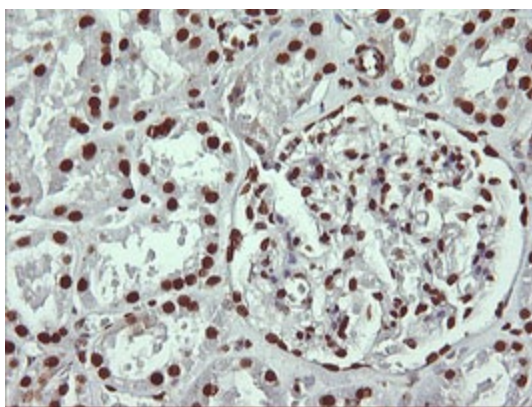
## Product images:



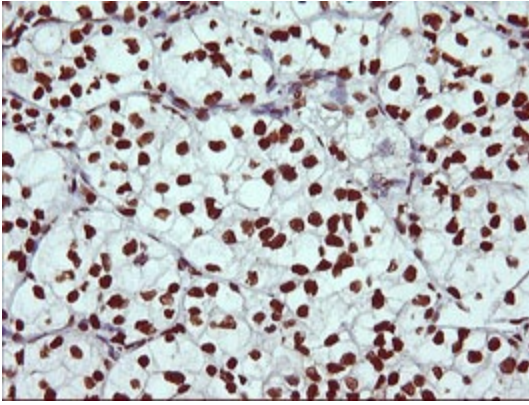
HEK293T cells were transfected with the pCMV6-ENTRY control (Left lane) or pCMV6-ENTRY THUMPD1 ([RC201773], Right lane) cDNA for 48 hrs and lysed. Equivalent amounts of cell lysates (5 ug per lane) were separated by SDS-PAGE and immunoblotted with anti-THUMPD1. Positive lysates [LY413587] (100ug) and [LC413587] (20ug) can be purchased separately from OriGene.



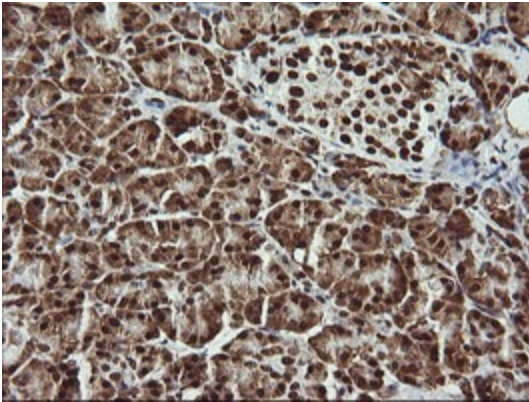
Western blot analysis of extracts (35ug) from 9 different cell lines by using anti-THUMPD1 monoclonal antibody (HepG2: human; HeLa: human; SVT2: mouse; A549: human; COS7: monkey; Jurkat: human; MDCK: canine; PC12: rat; MCF7: human).



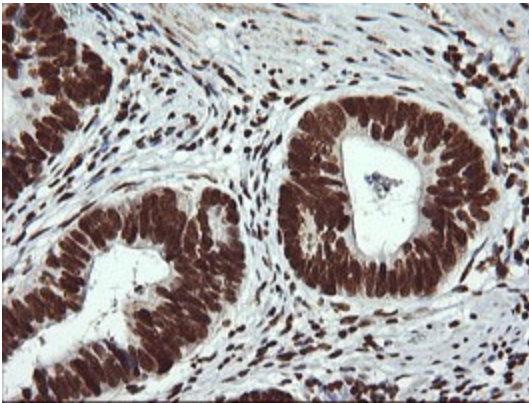
Immunohistochemical staining of paraffin-embedded Human Kidney tissue within the normal limits using anti-THUMPD1 mouse monoclonal antibody. (Heat-induced epitope retrieval by 10mM citric buffer, pH6.0, 120°C for 3min, TA505871)



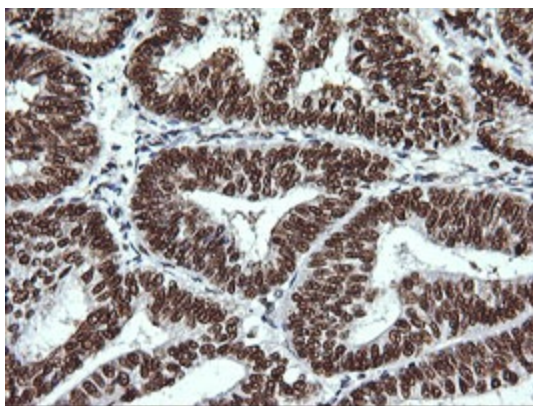
Immunohistochemical staining of paraffin-embedded Carcinoma of Human kidney tissue using anti-THUMPD1 mouse monoclonal antibody. (Heat-induced epitope retrieval by 10mM citric buffer, pH6.0, 120°C for 3min, TA505871)



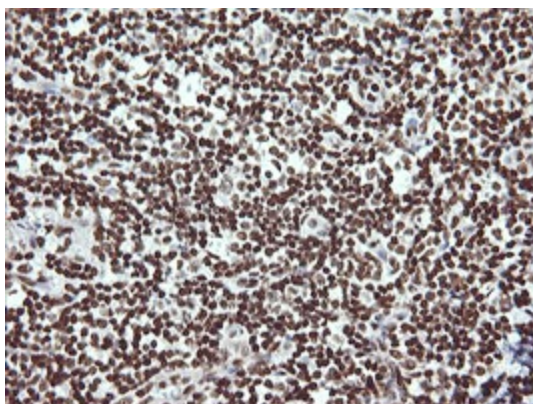
Immunohistochemical staining of paraffin-embedded Human pancreas tissue within the normal limits using anti-THUMPD1 mouse monoclonal antibody. (Heat-induced epitope retrieval by 10mM citric buffer, pH6.0, 120°C for 3min, TA505871)



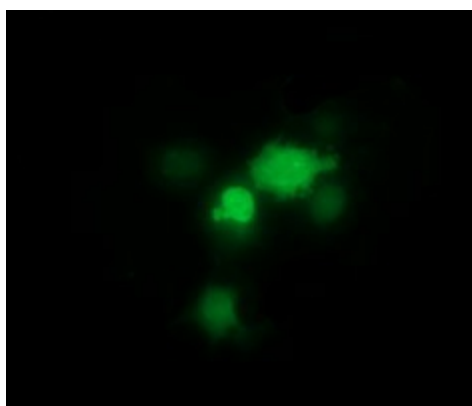
Immunohistochemical staining of paraffin-embedded Carcinoma of Human pancreas tissue using anti-THUMPD1 mouse monoclonal antibody. (Heat-induced epitope retrieval by 10mM citric buffer, pH6.0, 120°C for 3min, TA505871)



Immunohistochemical staining of paraffin-embedded Adenocarcinoma of Human endometrium tissue using anti-THUMPD1 mouse monoclonal antibody. (Heat-induced epitope retrieval by 10mM citric buffer, pH6.0, 120°C for 3min, TA505871)



Immunohistochemical staining of paraffin-embedded Human tonsil within the normal limits using anti-THUMPD1 mouse monoclonal antibody. (Heat-induced epitope retrieval by 10mM citric buffer, pH6.0, 120°C for 3min, TA505871)



Anti-THUMPD1 mouse monoclonal antibody (TA505871) immunofluorescent staining of COS7 cells transiently transfected by pCMV6-ENTRY THUMPD1 ([RC201773]).



Immunofluorescent staining of HeLa cells using anti-THUMPD1 mouse monoclonal antibody (TA505871).