

Product datasheet for **TA505865BM**

SAPK4 (MAPK13) Mouse Monoclonal Antibody (HRP conjugated) [Clone ID: OTI2G6]

Product data:

Product Type:	Primary Antibodies
Clone Name:	OTI2G6
Applications:	IF, WB
Recommended Dilution:	WB 1:200~1000, IF 1:100
Reactivity:	Human, Dog, Rat, Monkey, Mouse
Host:	Mouse
Isotype:	IgG1
Clonality:	Monoclonal
Immunogen:	Full length human recombinant protein of human MAPK13(NP_002745) produced in HEK293T cell.
Formulation:	PBS (pH 7.3) containing 1% BSA, 50% glycerol.
Concentration:	0.5 mg/ml
Purification:	Purified from mouse ascites fluids or tissue culture supernatant by affinity chromatography (protein A/G)
Conjugation:	HRP
Storage:	Store at -20°C as received.
Stability:	Stable for 12 months from date of receipt.
Predicted Protein Size:	41.9 kDa
Gene Name:	mitogen-activated protein kinase 13
Database Link:	NP_002745 Entrez Gene 26415 Mouse Entrez Gene 29513 Rat Entrez Gene 612821 Dog Entrez Gene 719085 Monkey Entrez Gene 5603 Human O15264
Synonyms:	MAPK-13; MAPK 13; p38delta; PRKM13; SAPK4
Protein Families:	Druggable Genome, Protein Kinase

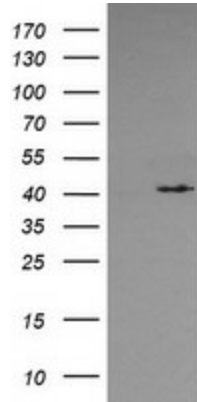


[View online »](#)

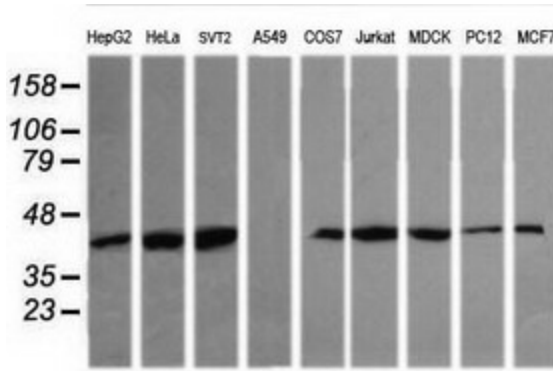
Protein Pathways:

Amyotrophic lateral sclerosis (ALS), Epithelial cell signaling in Helicobacter pylori infection, Fc epsilon RI signaling pathway, GnRH signaling pathway, Leukocyte transendothelial migration, MAPK signaling pathway, Neurotrophin signaling pathway, NOD-like receptor signaling pathway, Progesterone-mediated oocyte maturation, RIG-I-like receptor signaling pathway, T cell receptor signaling pathway, Toll-like receptor signaling pathway, VEGF signaling pathway

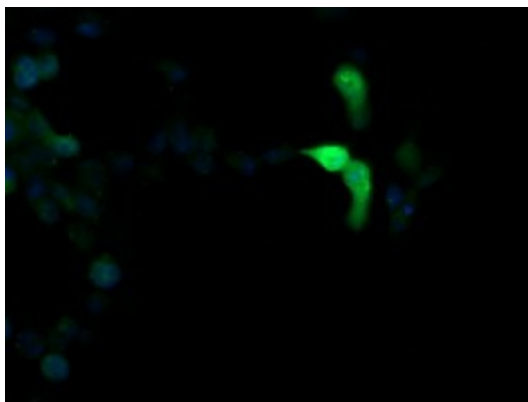
Product images:



HEK293T cells were transfected with the pCMV6-ENTRY control (Left lane) or pCMV6-ENTRY MAPK13 ([RC200606], Right lane) cDNA for 48 hrs and lysed. Equivalent amounts of cell lysates (5 ug per lane) were separated by SDS-PAGE and immunoblotted with anti-MAPK13. Positive lysates [LY400973] (100ug) and [LC400973] (20ug) can be purchased separately from OriGene.



Western blot analysis of extracts (35ug) from 9 different cell lines by using anti-MAPK13 monoclonal antibody (HepG2: human; HeLa: human; SVT2: mouse; A549: human; COS7: monkey; Jurkat: human; MDCK: canine; PC12: rat; MCF7: human).



Anti-MAPK13 mouse monoclonal antibody ([TA505865]) immunofluorescent staining of COS7 cells transiently transfected by pCMV6-ENTRY MAPK13 ([RC200606]).