

## Product datasheet for **TA505858AM**

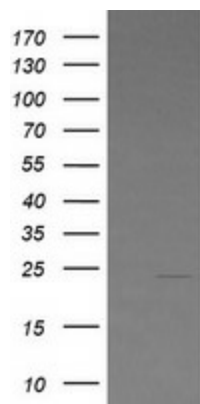
### LZIC Mouse Monoclonal Antibody (Biotin conjugated) [Clone ID: OTI4E6]

#### Product data:

Product Type:	Primary Antibodies
Clone Name:	OTI4E6
Applications:	IF, WB
Recommended Dilution:	WB 1:500, IF 1:100
Reactivity:	Human, Mouse, Rat
Host:	Mouse
Isotype:	IgG1
Clonality:	Monoclonal
Immunogen:	Full length human recombinant protein of human LZIC(NP_115744) produced in HEK293T cell.
Formulation:	PBS (pH 7.3) containing 1% BSA, 50% glycerol and 0.02% sodium azide.
Concentration:	0.5 mg/ml
Purification:	Purified from mouse ascites fluids or tissue culture supernatant by affinity chromatography (protein A/G)
Conjugation:	Biotin
Storage:	Store at -20°C as received.
Stability:	Stable for 12 months from date of receipt.
Predicted Protein Size:	21.3 kDa
Gene Name:	leucine zipper and CTNNBIP1 domain containing
Database Link:	<a href="#">NP_115744</a> <a href="#">Entrez Gene 69151 Mouse</a> <a href="#">Entrez Gene 366507 Rat</a> <a href="#">Entrez Gene 84328 Human</a> <a href="#">Q8WZA0</a>
Synonyms:	MGC15436



[View online »](#)

**Product images:**

HEK293T cells were transfected with the pCMV6-ENTRY control (Left lane) or pCMV6-ENTRY LZIC ([RC209433], Right lane) cDNA for 48 hrs and lysed. Equivalent amounts of cell lysates (5 ug per lane) were separated by SDS-PAGE and immunoblotted with anti-LZIC. Positive lysates [LY410162] (100ug) and [LC410162] (20ug) can be purchased separately from OriGene.



Immunofluorescent staining of HeLa cells using anti-LZIC mouse monoclonal antibody ([TA505858]).