

## Product datasheet for **TA505853**

### **SAPK4 (MAPK13) Mouse Monoclonal Antibody [Clone ID: OTI2F1]**

#### **Product data:**

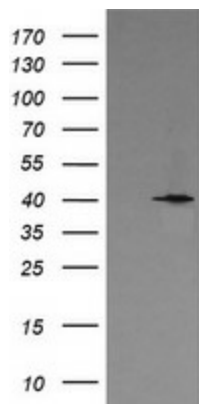
Product Type:	Primary Antibodies
Clone Name:	OTI2F1
Applications:	IF, WB
Recommended Dilution:	WB 1:2000, IF 1:100
Reactivity:	Human, Mouse, Rat
Host:	Mouse
Isotype:	IgG2b
Clonality:	Monoclonal
Immunogen:	Full length human recombinant protein of human MAPK13(NP_002745) produced in HEK293T cell.
Formulation:	PBS (pH 7.3) containing 1% BSA, 50% glycerol and 0.02% sodium azide.
Concentration:	1 mg/ml
Purification:	Purified from mouse ascites fluids or tissue culture supernatant by affinity chromatography (protein A/G)
Conjugation:	Unconjugated
Storage:	Store at -20°C as received.
Stability:	Stable for 12 months from date of receipt.
Gene Name:	mitogen-activated protein kinase 13
Database Link:	<a href="#">NP_002745</a> <a href="#">Entrez Gene 26415 Mouse</a> <a href="#">Entrez Gene 29513 Rat</a> <a href="#">Entrez Gene 5603 Human</a> <a href="#">O15264</a>
Synonyms:	MAPK-13; MAPK 13; p38delta; PRKM13; SAPK4
Protein Families:	Druggable Genome, Protein Kinase



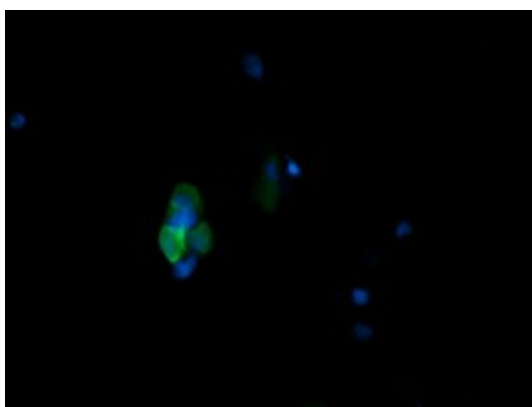
[View online »](#)

**Protein Pathways:**

Amyotrophic lateral sclerosis (ALS), Epithelial cell signaling in Helicobacter pylori infection, Fc epsilon RI signaling pathway, GnRH signaling pathway, Leukocyte transendothelial migration, MAPK signaling pathway, Neurotrophin signaling pathway, NOD-like receptor signaling pathway, Progesterone-mediated oocyte maturation, RIG-I-like receptor signaling pathway, T cell receptor signaling pathway, Toll-like receptor signaling pathway, VEGF signaling pathway

**Product images:**

HEK293T cells were transfected with the pCMV6-ENTRY control (Left lane) or pCMV6-ENTRY MAPK13 ([RC200606], Right lane) cDNA for 48 hrs and lysed. Equivalent amounts of cell lysates (5 ug per lane) were separated by SDS-PAGE and immunoblotted with anti-MAPK13. Positive lysates [LY400973] (100ug) and [LC400973] (20ug) can be purchased separately from OriGene.



Anti-MAPK13 mouse monoclonal antibody (TA505853) immunofluorescent staining of COS7 cells transiently transfected by pCMV6-ENTRY MAPK13 ([RC200606]).