

Product datasheet for **TA505849AM**

Synaptotagmin 4 (SYT4) Mouse Monoclonal Antibody (Biotin conjugated) [Clone ID: OTI2D3]

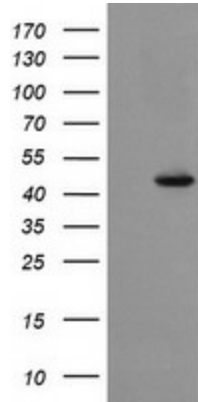
Product data:

| | |
|-------------------------|---|
| Product Type: | Primary Antibodies |
| Clone Name: | OTI2D3 |
| Applications: | IF, IHC, WB |
| Recommended Dilution: | WB 1:4000, IHC 1:150, IF 1:100 |
| Reactivity: | Human, Mouse, Rat |
| Host: | Mouse |
| Isotype: | IgG2b |
| Clonality: | Monoclonal |
| Immunogen: | Full length human recombinant protein of human SYT4(NP_065834) produced in HEK293T cell. |
| Formulation: | PBS (pH 7.3) containing 1% BSA, 50% glycerol and 0.02% sodium azide. |
| Concentration: | 0.5 mg/ml |
| Purification: | Purified from mouse ascites fluids or tissue culture supernatant by affinity chromatography (protein A/G) |
| Conjugation: | Biotin |
| Storage: | Store at -20°C as received. |
| Stability: | Stable for 12 months from date of receipt. |
| Predicted Protein Size: | 47.8 kDa |
| Gene Name: | synaptotagmin 4 |
| Database Link: | NP_065834 Entrez Gene 6860 Human Q9H2B2 |
| Synonyms: | HsT1192 |
| Protein Families: | Secreted Protein, Transmembrane |

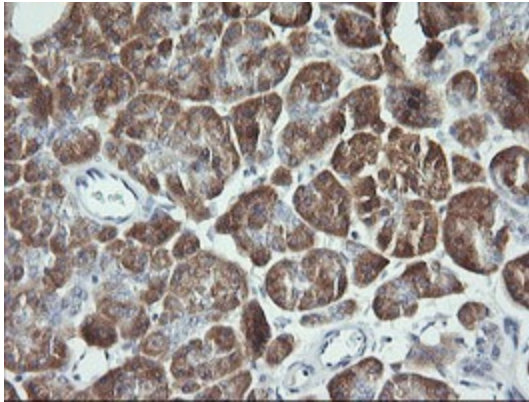


[View online »](#)

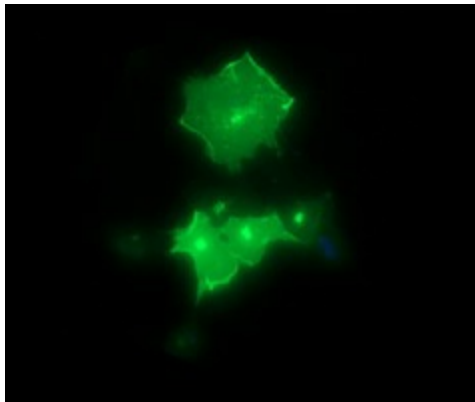
Product images:



HEK293T cells were transfected with the pCMV6-ENTRY control (Left lane) or pCMV6-ENTRY SYT4 ([RC206304], Right lane) cDNA for 48 hrs and lysed. Equivalent amounts of cell lysates (5 ug per lane) were separated by SDS-PAGE and immunoblotted with anti-SYT4. Positive lysates [LY412338] (100ug) and [LC412338] (20ug) can be purchased separately from OriGene.



Immunohistochemical staining of paraffin-embedded Human pancreas tissue within the normal limits using anti-SYT4 mouse monoclonal antibody. (Heat-induced epitope retrieval by 10mM citric buffer, pH6.0, 120°C for 3min, [TA505849])



Anti-SYT4 mouse monoclonal antibody ([TA505849]) immunofluorescent staining of COS7 cells transiently transfected by pCMV6-ENTRY SYT4 ([RC206304]).