

## Product datasheet for **TA505848S**

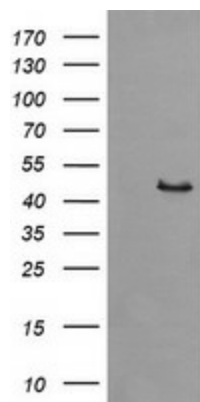
### Synaptotagmin 4 (SYT4) Mouse Monoclonal Antibody [Clone ID: OTI2F2]

#### Product data:

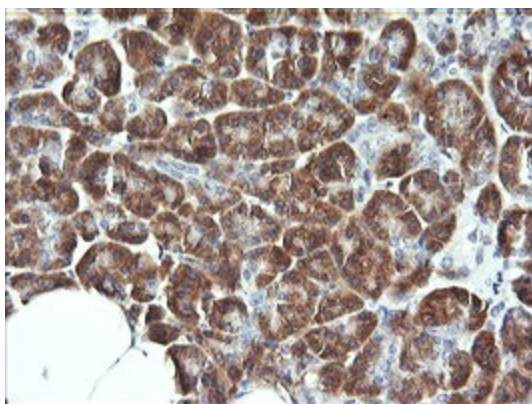
Product Type:	Primary Antibodies
Clone Name:	OTI2F2
Applications:	IF, IHC, WB
Recommended Dilution:	WB 1:4000, IHC 1:150, IF 1:100
Reactivity:	Human, Mouse, Rat
Host:	Mouse
Isotype:	IgG2b
Clonality:	Monoclonal
Immunogen:	Full length human recombinant protein of human SYT4(NP_065834) produced in HEK293T cell.
Formulation:	PBS (pH 7.3) containing 1% BSA, 50% glycerol and 0.02% sodium azide.
Concentration:	1 mg/ml
Purification:	Purified from mouse ascites fluids or tissue culture supernatant by affinity chromatography (protein A/G)
Conjugation:	Unconjugated
Storage:	Store at -20°C as received.
Stability:	Stable for 12 months from date of receipt.
Predicted Protein Size:	47.8 kDa
Gene Name:	synaptotagmin 4
Database Link:	<a href="#">NP_065834</a> <a href="#">Entrez Gene 6860 Human</a> <a href="#">Q9H2B2</a>
Synonyms:	HsT1192
Protein Families:	Secreted Protein, Transmembrane



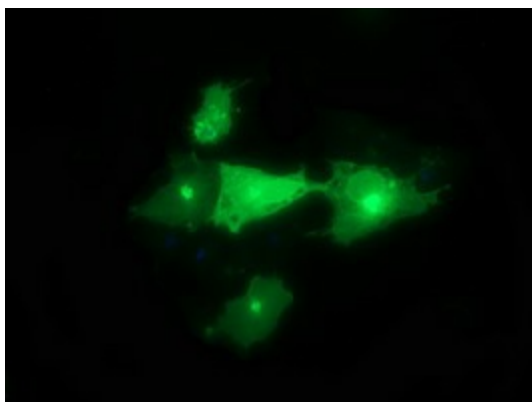
[View online »](#)

**Product images:**

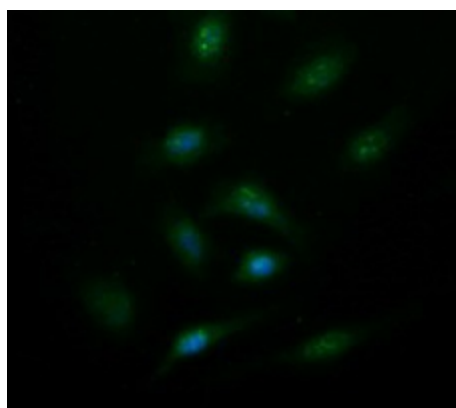
HEK293T cells were transfected with the pCMV6-ENTRY control (Left lane) or pCMV6-ENTRY SYT4 ([RC206304], Right lane) cDNA for 48 hrs and lysed. Equivalent amounts of cell lysates (5 ug per lane) were separated by SDS-PAGE and immunoblotted with anti-SYT4. Positive lysates [LY412338] (100ug) and [LC412338] (20ug) can be purchased separately from OriGene.



Immunohistochemical staining of paraffin-embedded Human pancreas tissue within the normal limits using anti-SYT4 mouse monoclonal antibody. (Heat-induced epitope retrieval by 10mM citric buffer, pH6.0, 120°C for 3min, [TA505848])



Anti-SYT4 mouse monoclonal antibody ([TA505848]) immunofluorescent staining of COS7 cells transiently transfected by pCMV6-ENTRY SYT4 ([RC206304]).



Immunofluorescent staining of HeLa cells using anti-SYT4 mouse monoclonal antibody ([TA505848]).