

Product datasheet for **TA505833BM**

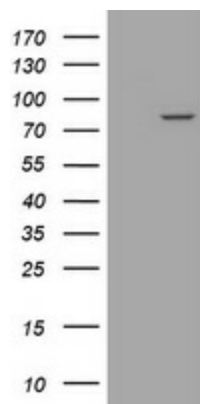
Solo (SESTD1) Mouse Monoclonal Antibody (HRP conjugated) [Clone ID: OTI3A11]

Product data:

Product Type:	Primary Antibodies
Clone Name:	OTI3A11
Applications:	WB
Recommended Dilution:	WB 1:500
Reactivity:	Human, Mouse, Rat
Host:	Mouse
Isotype:	IgG2b
Clonality:	Monoclonal
Immunogen:	Full length human recombinant protein of human SESTD1(NP_835224) produced in HEK293T cell.
Formulation:	PBS (pH 7.3) containing 1% BSA, 50% glycerol.
Concentration:	0.5 mg/ml
Purification:	Purified from mouse ascites fluids or tissue culture supernatant by affinity chromatography (protein A/G)
Conjugation:	HRP
Storage:	Store at -20°C as received.
Stability:	Stable for 12 months from date of receipt.
Predicted Protein Size:	79.2 kDa
Gene Name:	SEC14 and spectrin domain containing 1
Database Link:	NP_835224 Entrez Gene 228071 Mouse Entrez Gene 295678 Rat Entrez Gene 91404 Human Q86VW0
Synonyms:	SOLO
Protein Families:	Druggable Genome



[View online »](#)

Product images:

HEK293T cells were transfected with the pCMV6-ENTRY control (Left lane) or pCMV6-ENTRY SESTD1 ([RC207976], Right lane) cDNA for 48 hrs and lysed. Equivalent amounts of cell lysates (5 ug per lane) were separated by SDS-PAGE and immunoblotted with anti-SESTD1. Positive lysates [LY406035] (100ug) and [LC406035] (20ug) can be purchased separately from OriGene.