

## Product datasheet for **TA505823BM**

### LZIC Mouse Monoclonal Antibody (HRP conjugated) [Clone ID: OTI3A7]

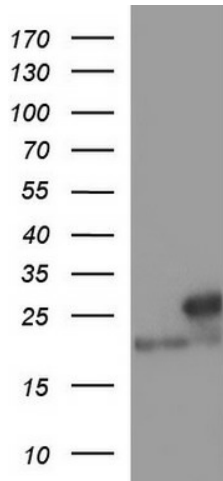
#### Product data:

Product Type:	Primary Antibodies
Clone Name:	OTI3A7
Applications:	IF, IHC, WB
Recommended Dilution:	WB 1:400 -1:2000, IHC 1:150, IF 1:100
Reactivity:	Human, Mouse, Rat
Host:	Mouse
Isotype:	IgG1
Clonality:	Monoclonal
Immunogen:	Human recombinant protein fragment corresponding to amino acids 1-190 of human LZIC (NP_115744) produced in E.coli.
Formulation:	PBS (pH 7.3) containing 1% BSA, 50% glycerol.
Concentration:	0.5 mg/ml
Purification:	Purified from mouse ascites fluids or tissue culture supernatant by affinity chromatography (protein A/G)
Conjugation:	HRP
Storage:	Store at -20°C as received.
Stability:	Stable for 12 months from date of receipt.
Predicted Protein Size:	21.3 kDa
Gene Name:	leucine zipper and CTNNBIP1 domain containing
Database Link:	<a href="#">NP_115744</a> <a href="#">Entrez Gene 69151 Mouse</a> <a href="#">Entrez Gene 366507 Rat</a> <a href="#">Entrez Gene 84328 Human</a> <a href="#">Q8WZA0</a>
Synonyms:	MGC15436

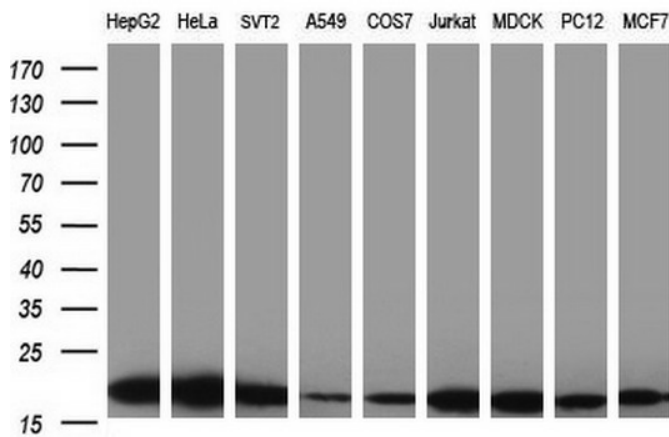


[View online »](#)

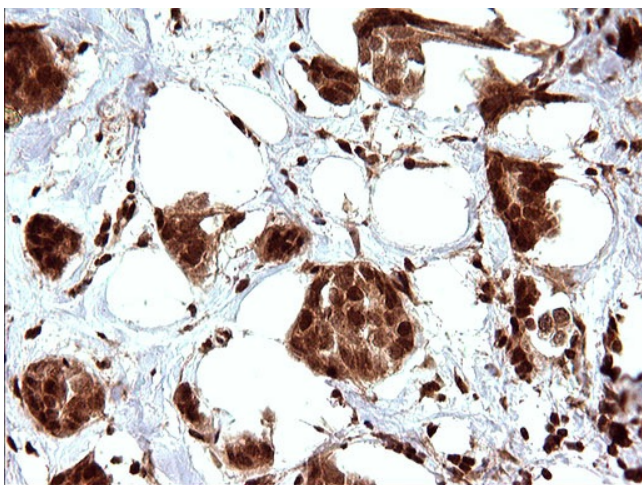
**Product images:**



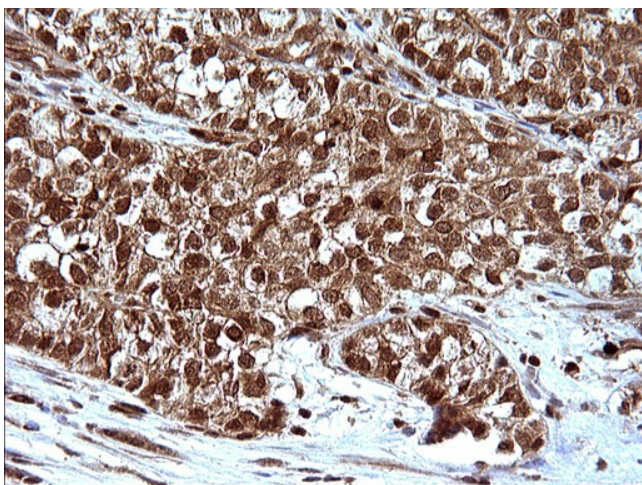
HEK293T cells were transfected with the pCMV6-ENTRY control (Left lane) or pCMV6-ENTRY LZIC ([RC209433], Right lane) cDNA for 48 hrs and lysed. Equivalent amounts of cell lysates (5 ug per lane) were separated by SDS-PAGE and immunoblotted with anti-LZIC. Positive lysates [LY410162] (100ug) and [LC410162] (20ug) can be purchased separately from OriGene.



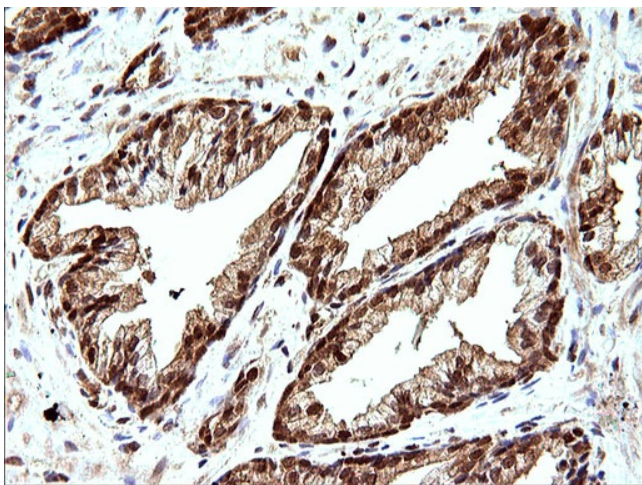
Western blot analysis of extracts (35ug) from 9 different cell lines by using anti-LZIC monoclonal antibody at 1:400 dilution (HepG2: human; HeLa: human; SVT2: mouse; A549: human; COS7: monkey; Jurkat: human; MDCK: canine; PC12: rat; MCF7: human).



Immunohistochemical staining of paraffin-embedded Adenocarcinoma of Human breast tissue using anti-LZIC mouse monoclonal antibody. (Heat-induced epitope retrieval by 10mM citric buffer, pH6.0, 120°C for 3min, [TA505823])

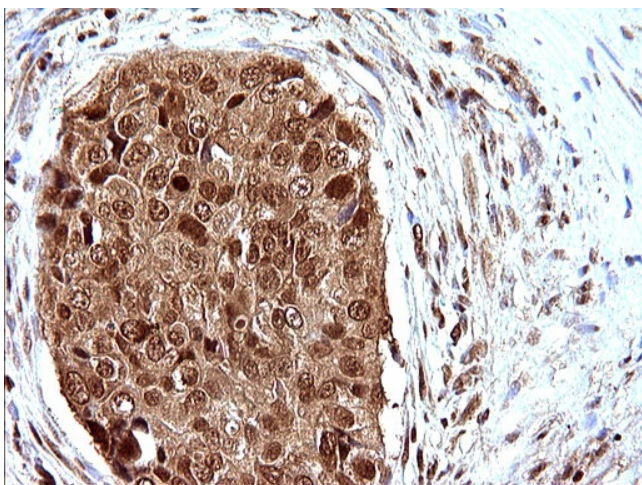


Immunohistochemical staining of paraffin-embedded Carcinoma of Human liver tissue using anti-LZIC mouse monoclonal antibody. (Heat-induced epitope retrieval by 10mM citric buffer, pH6.0, 120°C for 3min, [TA505823])

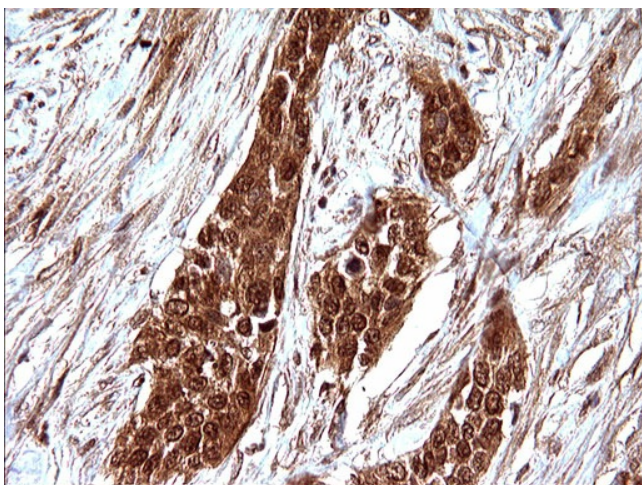


Immunohistochemical staining of paraffin-embedded Human prostate tissue within the normal limits using anti-LZIC mouse monoclonal antibody. (Heat-induced epitope retrieval by 10mM citric buffer, pH6.0, 120°C for 3min, [TA505823])

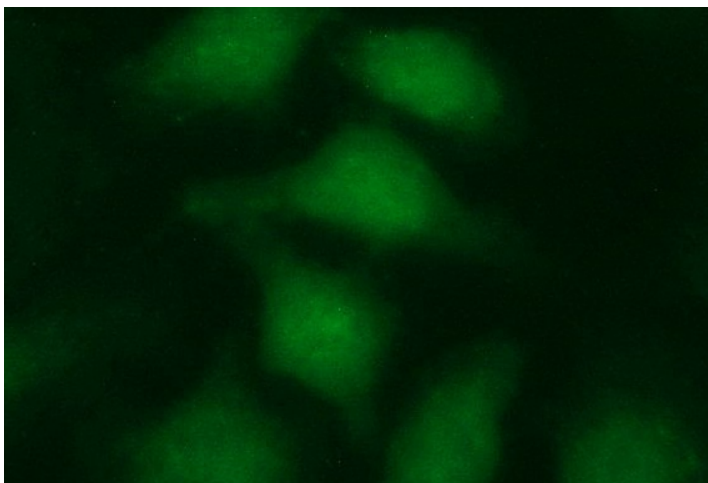




Immunohistochemical staining of paraffin-embedded Carcinoma of Human prostate tissue using anti-LZIC mouse monoclonal antibody. (Heat-induced epitope retrieval by 10mM citric buffer, pH6.0, 120°C for 3min, [TA505823])



Immunohistochemical staining of paraffin-embedded Carcinoma of Human bladder tissue using anti-LZIC mouse monoclonal antibody. (Heat-induced epitope retrieval by 10mM citric buffer, pH6.0, 120°C for 3min, [TA505823])



Immunofluorescent staining of HeLa cells using anti-LZIC mouse monoclonal antibody ([TA505823]).