

Product datasheet for **TA505820AM**

SAPK4 (MAPK13) Mouse Monoclonal Antibody (Biotin conjugated) [Clone ID: OTI12E2]

Product data:

Product Type:	Primary Antibodies
Clone Name:	OTI12E2
Applications:	WB
Recommended Dilution:	WB 1:4000
Reactivity:	Human, Mouse, Rat
Host:	Mouse
Isotype:	IgG2b
Clonality:	Monoclonal
Immunogen:	Full length human recombinant protein of human MAPK13(NP_002745) produced in HEK293T cell.
Formulation:	PBS (pH 7.3) containing 1% BSA, 50% glycerol and 0.02% sodium azide.
Concentration:	0.5 mg/ml
Purification:	Purified from mouse ascites fluids or tissue culture supernatant by affinity chromatography (protein A/G)
Conjugation:	Biotin
Storage:	Store at -20°C as received.
Stability:	Stable for 12 months from date of receipt.
Predicted Protein Size:	41.9 kDa
Gene Name:	mitogen-activated protein kinase 13
Database Link:	NP_002745 Entrez Gene 26415 Mouse Entrez Gene 29513 Rat Entrez Gene 5603 Human O15264



[View online »](#)

Background:

This gene encodes a member of the mitogen-activated protein (MAP) kinase family. MAP kinases act as an integration point for multiple biochemical signals, and are involved in a wide variety of cellular processes such as proliferation, differentiation, transcription regulation and development. The encoded protein is a p38 MAP kinase and is activated by proinflammatory cytokines and cellular stress. Substrates of the encoded protein include the transcription factor ATF2 and the microtubule dynamics regulator stathmin. Alternatively spliced transcript variants have been observed for this gene. [provided by RefSeq, Jul 2012]

Synonyms:

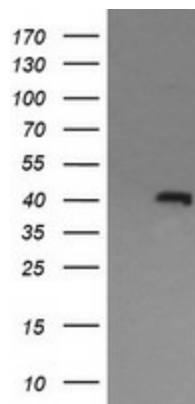
MAPK-13; MAPK 13; p38delta; PRKM13; SAPK4

Protein Families:

Druggable Genome, Protein Kinase

Protein Pathways:

Amyotrophic lateral sclerosis (ALS), Epithelial cell signaling in Helicobacter pylori infection, Fc epsilon RI signaling pathway, GnRH signaling pathway, Leukocyte transendothelial migration, MAPK signaling pathway, Neurotrophin signaling pathway, NOD-like receptor signaling pathway, Progesterone-mediated oocyte maturation, RIG-I-like receptor signaling pathway, T cell receptor signaling pathway, Toll-like receptor signaling pathway, VEGF signaling pathway

Product images:

HEK293T cells were transfected with the pCMV6-ENTRY control (Left lane) or pCMV6-ENTRY MAPK13 ([RC200606], Right lane) cDNA for 48 hrs and lysed. Equivalent amounts of cell lysates (5 ug per lane) were separated by SDS-PAGE and immunoblotted with anti-MAPK13. Positive lysates [LY400973] (100ug) and [LC400973] (20ug) can be purchased separately from OriGene.