

## Product datasheet for **TA505813M**

### **BMP1 Mouse Monoclonal Antibody [Clone ID: OTI3E9]**

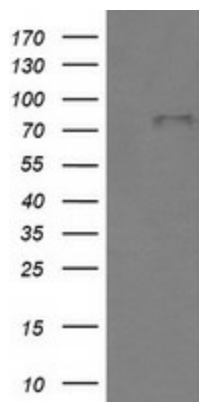
#### **Product data:**

|                         |  |
|-------------------------|--|
| Product Type:           | Primary Antibodies   |
| Clone Name:             | OTI3E9   |
| Applications:           | IF, WB   |
| Recommended Dilution:   | WB 1:4000, IF 1:100  |
| Reactivity:             | Human, Mouse, Rat  |
| Host:                   | Mouse  |
| Isotype:                | IgG1   |
| Clonality:              | Monoclonal   |
| Immunogen:              | Human recombinant protein fragment corresponding to amino acids 225-617 of human BMP1(NP_001190) produced in E.coli.   |
| Formulation:            | PBS (pH 7.3) containing 1% BSA, 50% glycerol and 0.02% sodium azide.   |
| Concentration:          | 1 mg/ml  |
| Purification:           | Purified from mouse ascites fluids or tissue culture supernatant by affinity chromatography (protein A/G)  |
| Conjugation:            | Unconjugated   |
| Storage:                | Store at -20°C as received.  |
| Stability:              | Stable for 12 months from date of receipt.   |
| Predicted Protein Size: | 80.5 kDa   |
| Gene Name:              | bone morphogenetic protein 1   |
| Database Link:          | <a href="#">NP_001190</a><br><a href="#">Entrez Gene 12153 Mouse</a> <a href="#">Entrez Gene 83470 Rat</a> <a href="#">Entrez Gene 649 Human</a><br><a href="#">P13497</a> |
| Synonyms:               | OI13; PCOLC; PCP; PCP2; TLD  |
| Protein Families:       | Druggable Genome, Protease   |

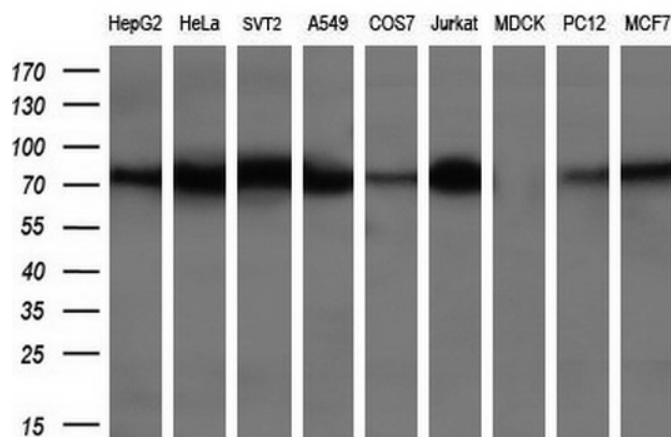


[View online »](#)

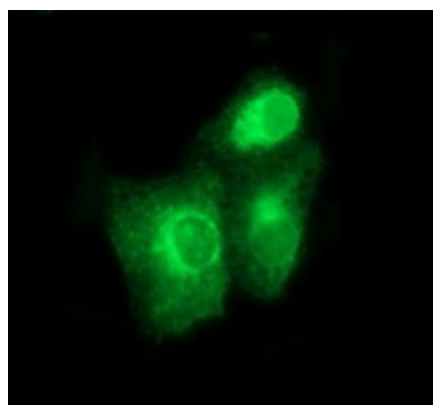
## Product images:



HEK293T cells were transfected with the pCMV6-ENTRY control (Cat# [PS100001], Left lane) or pCMV6-ENTRY BMP1 (Cat# [RC212538], Right lane) cDNA for 48 hrs and lysed. Equivalent amounts of cell lysates (5 ug per lane) were separated by SDS-PAGE and immunoblotted with anti-BMP1 (Cat# [TA505813]). Positive lysates [LY400480] (100ug) and [LC400480] (20ug) can be purchased separately from OriGene.



Western blot analysis of extracts (35ug) from 9 different cell lines by using anti-BMP1 monoclonal antibody at 1:200 dilution. (HepG2: human; HeLa: human; SVT2: mouse; A549: human; COS7: monkey; Jurkat: human; MDCK: canine; PC12: rat; MCF7: human)



Anti-BMP1 mouse monoclonal antibody ([TA505813]) immunofluorescent staining of COS7 cells transiently transfected by pCMV6-ENTRY BMP1 ([RC212538]).